

Electromechanical products - variable speed Atmospheres containing explosive dust Compabloc 3000 / LSMV PX - FCR



**CATEGORY 2
ZONE 21**

General information



Compabloc 3000 geared motors with helical gears are used to adapt the speed of the electric motor to that of the driven machine. Their size is therefore determined by the motor power (P) expressed in kilowatts (kW) and the output rotation speed of the gear box (n_S) in revolutions per minute (min^{-1}). The main characteristic of the speed reducers is the rated output torque (M_{nS}) expressed in Newton-metres (N.m) :

$$M_{nS} = \frac{P \times 9550}{n_S} \times \text{efficiency}$$

A range of six sizes : 30, 31, 32, 33, 34, 35.
Rated output torque : from 10 N.m to 3 150 N.m.
Power rating : from 0.09 to 30 kW.
Reduction ratio : from 1.25 to 204.
High efficiency : 95 % to 98 %.
Reversible.
Silent operation.

Gearboxes within the Compabloc 3000 range benefit from the ATEX **certifications** : INERIS n° 03 ATEX 0013 X. (Cbxxxx/LSPXxxxx geared motor), INERIS 03 ATEX 012X (FCR brake). Safety-related parameters : Frequency - 50 or 60 Hz ; other fixed values : between 1 and 200 Hz and special version with adapted parameters. The encoder supply is made by dispensation. The forced ventilation is forbidden from the frame size 71 to 160.

Construction

Description of Compabloc (Cb) gearboxes

Component	Materials	Remarks
Housing	Aluminium (30) Cast iron (31 to 35)	- use of cast aluminium - use of ENGJL-200 cast iron (flake graphite : tensile strength 200 MPa) single component perlite to ensure the complete sealing of the unit - monobloc reinforced internal ribbing to absorb vibrations and noise and to increase rigidity - with S baseplate, BT form or with BS, BD flanges. They are compact and meet industrial application-related requirements
Gears	Steel Ni Cr Mo	- cut by gear hob, they are heat treated by cementation, then undergo a final machining. The quality and the precision of the gear cutting allow maximum torque with minimum noise level
Seals	Nitrile	- sealing ring on the motor side - anti-dust lipseal collar according to DIN 3760 AS form - flat seal beneath the inspection door
Shaft	Steel	- grinding of the sealing surfaces - key according to ISO R773 - diameter tolerances in accordance with NFE 22-051 and ISO R775 - tapped holes at the shaft end in accordance with DIN 332 version D for mounting connecting equipment
Lubrication	Oil	- in accordance with ISO 6743 / 6 - supplied with the quantity of oil corresponding to the operating position, it is fitted with drain, level and vent plugs (Cb 30-- exclusive)
Mounting		MI : geared motor with integral mounting MU : geared motor with IEC motor, with universal mounting
Standard motor		LSMV PX : - multi-voltage 220/380 V - 230/400 V - 240/415 V - sheet metal fan cover, fitted on request with a drip cover for operation in vertical position (shaft end facing down) - metal terminal box fitted with cable gland - IP 65 motor protection
Brake motors		FCR : failsafe brake asynchronous motor, ranging from 0.18 to 11 kW, IP 65 protection (LS 71 to 160)
Other motors		See pages D06 to D09.
Finish	Paint	Shade : RAL 1007 (yellow), system I (1 polyurethane vinyl layer of 25/30 μm)

Electromechanical products - variable speed Atmospheres containing explosive dust Compabloc 3000 / LSMV PX - FCR

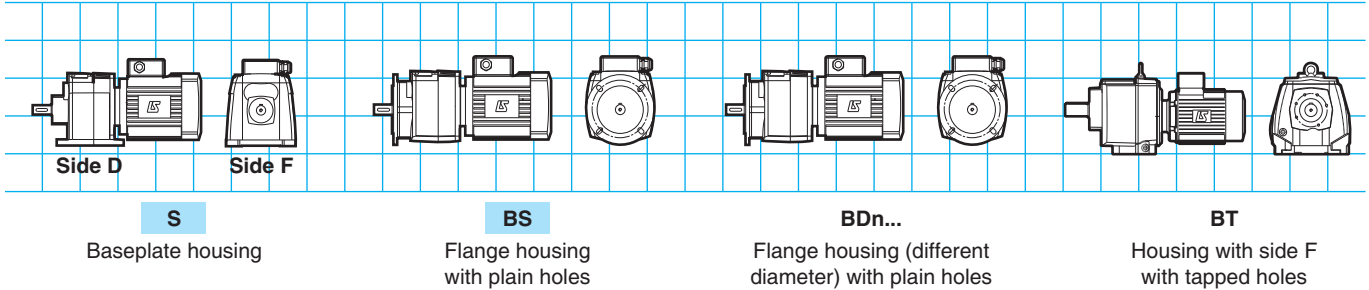


**CATEGORY 2
ZONE 21**

Mounting - operating positions

Standard position : gearbox seen from side F, motor to the rear, side D facing the ground.

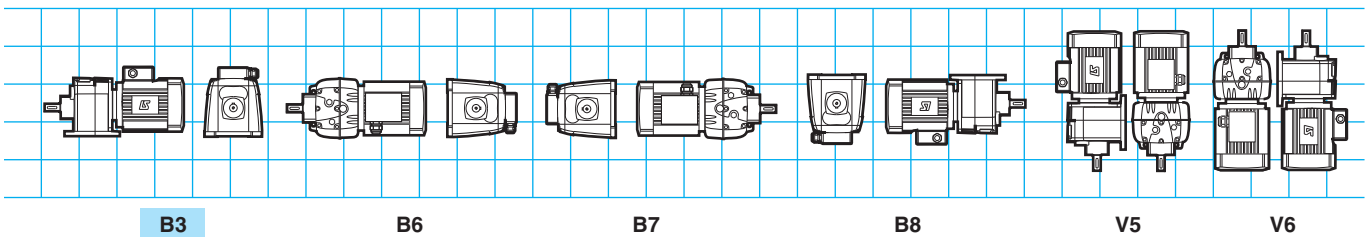
1 - Definition of mounting type : S, BS, BDn..., BT



2 - Definition of operating position

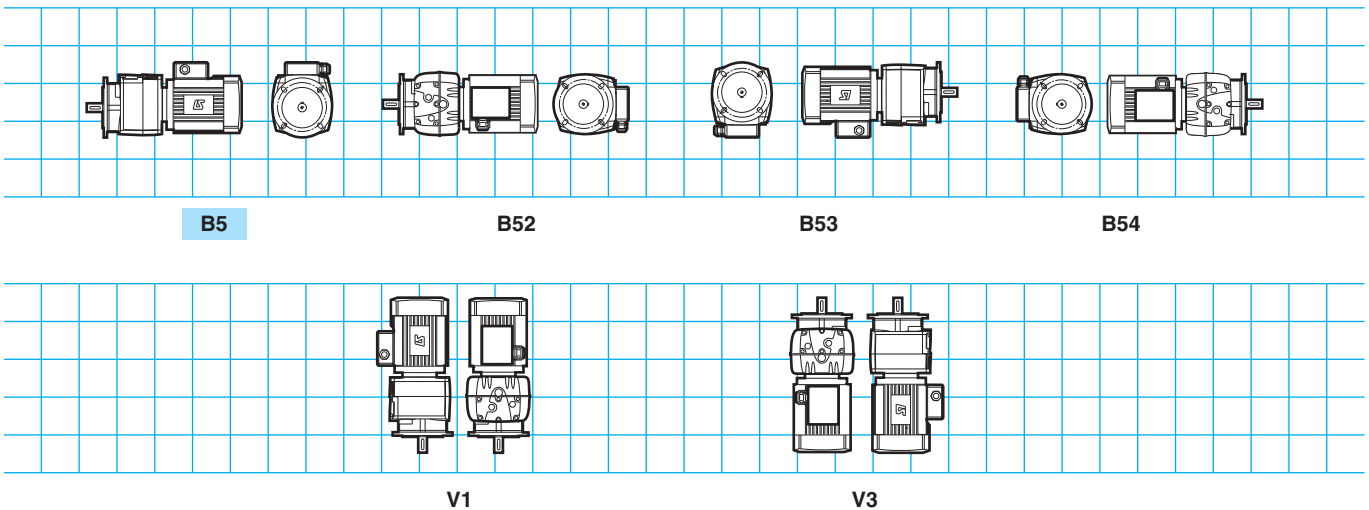
2.1- Mounting with S baseplate

Compabloc 1-train : Cb 3031 M* and 3131 to 3331, **Compabloc multi-train** : Cb 3032 and 3033 M* - Cb 3133 to 3333



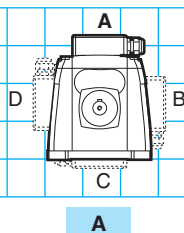
2.2- Mounting with BS, BDn... flanges, or BT form

Compabloc 1-train : Cb 3031 M* and 3131 to 3331, **Compabloc multi-train** : Cb 3032 and 3033 M* - Cb 3133 to 3333

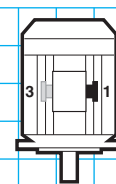
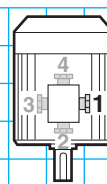


M* : For these multi-position geared motors (M), the positions should only be specified if the following are necessary : a vent plug on the gearbox and/or condensation water drain plug on the motor. Positions V3 and V6 MUST be specified.

3 - Terminal box positions



4 - Cable gland positions



Non-brake motor

Brake motor

Electromechanical products - variable speed Atmospheres containing explosive dust Compabloc 3000 / LSMV PX - FCR



**CATEGORY 2
ZONE 21**

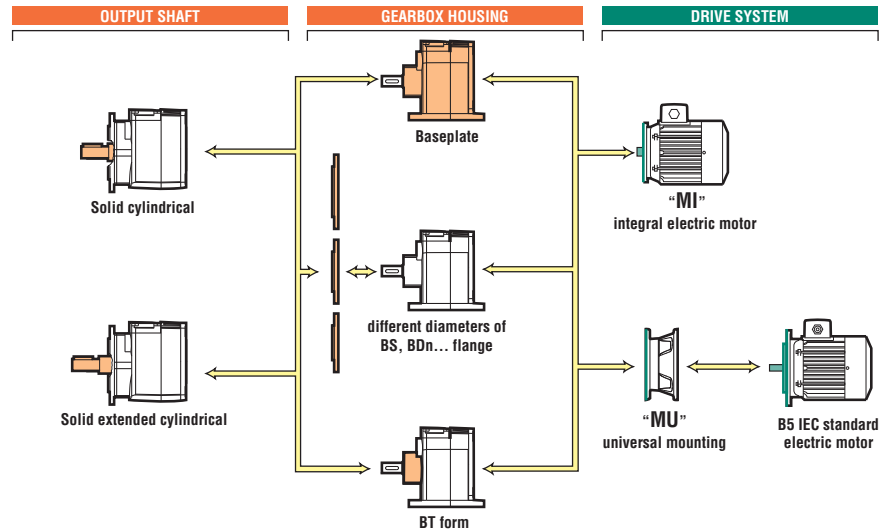
Adaptation possibilities

Leroy-Somer offers several drives for its gearboxes which meet a diverse range of needs. They are described below and offered in this catalogue.

For other drives, consult Leroy-Somer technical specialists who will be pleased to assist you.

☞ *Compabloc gearboxes can be used in conjunction with the following drives:*

- **fixed-speed 3-phase asynchronous motors :**
 - LSPX motor from 0.25 to 30 kW,
 - FCR brake LSPX motor from 0.25 to 15 kW,
 - FLSPX motor from 0.55 to 30 kW,
 - FCR brake FLSPX motor from 0.55 to 9 kW.
- **electronic variable speed motors :**
 - centralised system with separate drive**
 - LSMV PX motor from 0.25 to 30 kW,
 - LSMV PX... FCR brake motor from 0.25 to 11 kW.
 - decentralised system with built-in drive**
 - VARMECA from 0.25 to 4 kW.



Designation / Coding

ATEX II 2D T 125°C	Cb	3333	B3	S	80.9	MI	4P	LSMV PX 80 L	0.75 kW	230/400 V 50 Hz
Compabloc gearbox type	Manufacturer index and size	Operating position	Mounting type	Exact reduction	Input type	No. of poles	Series, frame size, manufacturer	Rated power	Voltage and mains frequency	Use

☞ *Codification example in ATEX zone 21 :*

Compabloc 3333 B3 0.75 kW, 18 min⁻¹, class III

Designation
Cb 3333 B3 S 80.9 MI 4P, LSMV PX 80, 0.75 kW 230/400 V - 50 Hz - II 2D T125° C.

All the products in this catalogue have a code.

The coding table is incorporated in the price list with the list of designations.

Each electromechanical product is classified first in order of power and then in order of speed.

Electromechanical products - variable speed Atmospheres containing explosive dust Compabloc 3000 / LSMV PX - FCR



**CATEGORY 2
ZONE 21**

Selection

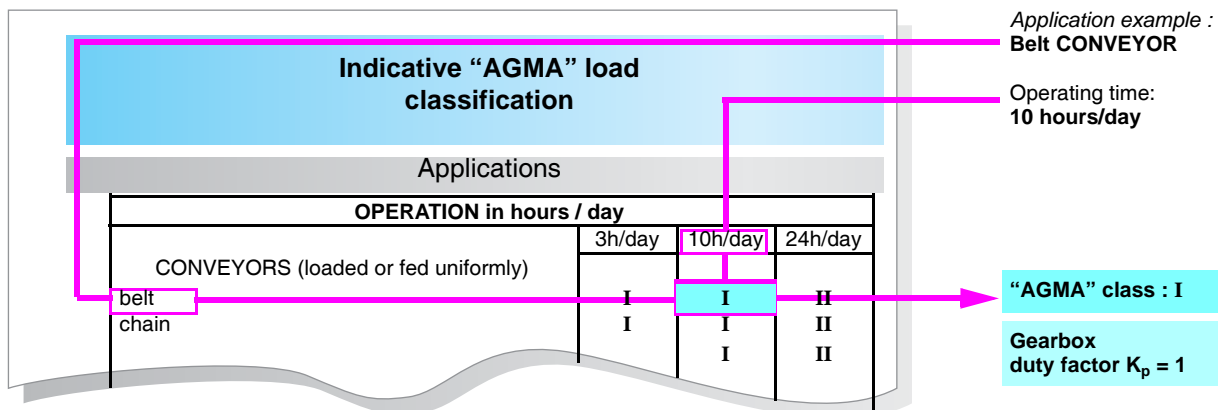
The selection of a gearbox or of a geared motor should take account of the application. Some of these applications are listed in the indicative "AGMA" load classification, page D0.10.

The opposite table summarises the relationship between the "AGMA" class and the gearbox duty factor K_p .

"AGMA" class	Gearbox duty factor K_p
I	1
II	1.4
III	2

1st case. – Your application is listed

Follow the indicative "AGMA" load classification table, page D0.10 of this catalogue. ▼



2nd case. – Your application is not listed

The "AGMA" selection class is defined by the daily operating time and by the application operating type, according to the table below. ▼

Type of application	Daily operating time	"AGMA" class
Shock-free, few starts	10 hours / day	I
Damped shocks	10 hours / day	II
Shock-free, few starts	24 hours / day	II
Violent shocks, many starts	10 hours / day	III
Damped shocks	24 hours / day	III

Electromechanical products - variable speed Atmospheres containing explosive dust Compabloc 3000 / LSMV PX - FCR



**CATEGORY 2
ZONE 21**

Conditions

Cb 3000 : S, BT, BS, BDn
LSMV PX, LSMV PX brake FCR - IP 65 - Cl.F - 400 V Y - 50 Hz
Ex II 2D T 125°C - ZONE 21

Inputs		Maximum quantity by order					
		Cb 3031	Cb 31...3531	Cb 3032/3033	Cb 31/32/3333	Cb 3433	Cb 3533
MI LSMV PX	0.25-4 kW						
	5.5-9 kW	-		-			
	11-30 kW	-		-			
MI LSMV PX FCR	0.25-4 kW	5	5	5	5	-	-
	5.5-9 kW	-	3	-	3	3	3
	11 kW	-		-	-		
MU LSMV PX	0.25-9 kW						
	11-30 kW	-		-			
MU LSMV PX FCR	0.25-4 kW	5	5	5	5	5	5
	5.5-9 kW	-	3	-	3	3	3
	11 kW	-		-	-		

	Mechanical options					
	S	BS	BD1	BD2	BD3	BT
Cb 3031						
Cb 31...3531				-	-	
Mounting	Page(s) of dimensions corresponding to mounting					
MI	D2.18	D2.20	D2.21	D2.21	-	D2.19
MU	D2.32-33	D2.32-33	D2.32-33	D2.32-33	-	D2.32-33

	Mechanical options					
	S	BS	BD1	BD2	BD3	BT
Cb 3032/3033/3133						
Cb 32/33/34/3533					-	
Mounting	Page(s) of dimensions corresponding to mounting					
MI	D2.22-23	D2.26-27	D2.28-29	D2.30	D2.31	D2.24-25
MU	D2.32-33	D2.32-33	D2.32-33	D2.32-33	D2.32-33	D2.32-33

Inputs 4p / MI-MU	Mains supply		Brake options and VV				
	230/400V		DLRA	Drip cover	TRR	Encoder	VF
LSMV PX	0.25-3 kW		-	-	-		-
	4 kW		-	-	-		-
	5.5-15 kW		-	-	-		-
	18.5-30 kW		-	-	-		-
LSMV PX FCR	0.25-9 kW						-
	11 kW						-



Electromechanical products - variable speed Atmospheres containing explosive dust Compabloc 3000 / LSMV PX - FCR



AGMA I, II, III

**CATEGORY 2
ZONE 21**

Cb 3031
LSMV PX, LSMV PX brake FCR - IP 65 - Cl.F - 400 V Y - 50 Hz
 II 2D T 125°C - ZONE 21

Cb 3031

		LSMV PX (kW)						
		0.25	0.37	0.75	1.5	2.2	3	4
		LSMV PX 4 p						
min ⁻¹	i	71 L	80 L	90 L	100 L	112 MG		
185	8.13	1.26						
208	7.22	1.41						
234	6.4	1.60	1.07					
258	5.82	1.76	1.17					
290	5.17	1.98	1.32					
327	4.58	2.23	1.49					
368	4.08	2.51	1.67					
414	3.63	2.82	1.88					
464	3.24	3.16	2.11	1.03				
545	2.75	3.71	2.48	1.21				
588	2.55	4.01	2.68	1.31				
685	2.19	4.66	3.11	1.52				
767	1.96	5.22	3.49	1.70				
821	1.83	5.59	3.74	1.83				
975	1.54	6.64	4.43	2.17				
1026	1.46	6.99	4.67	2.28				
1136	1.32	7.72	5.16	2.52				
4p LSMV PX brake¹		FCR J01		FCR J01				
FCR J01¹		FCR J01		FCR J01				

1. See chapter C25.

Rated power kW	LSMV PX, LSMV PX brake - 4p 300 to 1 500 ⁻¹ with constant torque			
	Motors	J 10 ⁻³ kg.m ²	Brake motors	J 10 ⁻³ kg.m ²
0.25	LSMV PX 71 L	0.85	LSMV PX 71 L FCR J01	1.25
0.37	LSMV PX 71 L	1.1	LSMV PX 71 L FCR J01	1.5
0.75	LSMV PX 80 L	2.4	LSMV PX 80 L FCR J01	3.4

Electromechanical products - variable speed Atmospheres containing explosive dust Compabloc 3000 / LSMV PX - FCR



AGMA I, II, III

**CATEGORY 2
ZONE 21**

Cb 3032 - 3033
LSMV PX, LSMV PX brake FCR - IP 65 - Cl.F - 400 V Y - 50 Hz
 II 2D T 125°C - ZONE 21

Cb 3032 - 3033

		LSMV PX (kW)						
		0.25	0.37	0.75	1.5	2.2	3	4
		LSMV PX 4 p						
min ⁻¹	i	71 L	80 L	90 L	100 L	112 MG		
21.7	69.1						Cb 3033	
23.4	64.1							
27.3	55	1.07						
30.5	49.2	1.20						
32.7	45.9	1.28						
38.8	38.7	1.52	1.01					
40.9	36.7	1.60	1.07					
33.1	45.4	1.30					Cb 3032	
37.2	40.3	1.46						
42	35.7	1.64	1.10					
46.2	32.5	1.80	1.20					
52	28.8	2.02	1.35					
58.6	25.6	2.28	1.52					
65.9	22.8	2.55	1.71					
74.1	20.2	2.87	1.91					
83	18.1	3.20	2.14	1.04				
97.7	15.4	3.75	2.51	1.22				
105	14.2	4.04	2.70	1.32				
123	12.2	4.68	3.13	1.53				
137	10.9	5.23	3.49	1.71				
147	10.2	5.59	3.73	1.82				
175	8.59	6.60	4.40	2.15				
184	8.16	6.93	4.63	2.26				
203	7.38	7.62	5.09	2.48				
4p LSMV PX brake¹								
FCR J01¹			FCR J01	FCR J01				

1. See chapter C25.

Rated power kW	LSMV PX, LSMV PX brake - 4p 300 to 1 500 ⁻¹ with constant torque			
	Motors	J 10 ⁻³ kg.m2	Brake motors	J 10 ⁻³ kg.m2
0.25	LSMV PX 71 L	0.85	LSMV PX 71 L FCR J01	1.25
0.37	LSMV PX 71 L	1.1	LSMV PX 71 L FCR J01	1.5
0.75	LSMV PX 80 L	2.4	LSMV PX 80 L FCR J01	3.4

Electromechanical products - variable speed Atmospheres containing explosive dust Compabloc 3000 / LSMV PX - FCR



AGMA I, II, III

**CATEGORY 2
ZONE 21**

Cb 3131
LSMV PX, LSMV PX brake FCR - IP 65 - Cl.F - 400 V Y - 50 Hz
 II 2D T 125°C - ZONE 21

Cb 3131

		LSMV PX (kW)						
		0.25	0.37	0.75	1.5	2.2	3	4
		LSMV PX 4 p						
min ⁻¹	i	71 L	80 L	90 L	100 L	112 MG		
190	7.91	4.04	3.55					
209	7.17	4.45	3.91					
240	6.25	5.11	3.41	1.67				
264	5.69	5.61	3.75	1.83				
305	4.92	6.49	4.34	2.12	1.05			
342	4.38	7.28	4.86	2.38	1.18			
382	3.93	8.13	5.43	2.65	1.31			
436	3.44	9.29	6.20	3.03	1.50	1.02		
462	3.25	9.82	6.56	3.21	1.59	1.08		
548	2.74	11.66	7.79	3.81	1.89	1.29		
582	2.58	12.38	8.27	4.04	2.00	1.36	1.00	
656	2.29	13.97	9.33	4.56	2.26	1.54	1.12	
750	2	15.44	10.30	5.03	2.49	1.70	1.24	
852	1.76	16.39	10.91	5.31	2.63	1.79	1.31	
964	1.56				2.74	1.86	1.36	
1088	1.38				2.84	1.93	1.41	
1231	1.22	18.92	12.60	6.14	3.04	2.07	1.51	
1293	1.16	19.52	13.00	6.33	3.13	2.14	1.56	
4p LSMV PX brakes¹		FCR J01		FCR J01	FCR J01	FCR J01		
FCR J01¹		FCR J01		FCR J01	FCR J01	FCR J01		

1. See chapter C25.

Rated power kW	LSMV PX, LSMV PX brake - 4p 300 to 1 500 ⁻¹ with constant torque			
	Motors	J 10 ⁻³ kg.m2	Brake motors	J 10 ⁻³ kg.m2
0.25	LSMV PX 71 L	0.85	LSMV PX 71 L FCR J01	1.25
0.37	LSMV PX 71 L	1.1	LSMV PX 71 L FCR J01	1.5
0.75	LSMV PX 80 L	2.4	LSMV PX 80 L FCR J01	3.4
1.5	LSMV PX 90 L	4.9	LSMV PX 90 L FCR J01	6.7
2.2	LSMV PX 100 L	5.1	LSMV PX 100 L FCR J01	6.9
3	LSMV PX 100 L	7.1	LSMV PX 100 L FCR J01	8.9

Electromechanical products - variable speed Atmospheres containing explosive dust Compabloc 3000 / LSMV PX - FCR



AGMA I, II, III

**CATEGORY 2
ZONE 21**

Cb 3133
LSMV PX, LSMV PX brake FCR - IP 65 - Cl.F - 400 V Y - 50 Hz
 II 2D T 125°C - ZONE 21

Cb 3133

		LSMV PX (kW)						
		0.25	0.37	0.75	1.5	2.2	3	4
		LSMV PX 4 p						
min ⁻¹	i	71 L	80 L	90 L	100 L	112 MG		
9.49	158							
10.4	144							
12.1	124	1.07						
13.5	111	1.19						
16	99.4	1.29						
17.3	87	1.42						
18.2	82.2	1.48						
21.7	69.2	1.66	1.11					
23	65.3	1.73	1.15					
25.9	57.8	1.87	1.25					
30.5	49.1	2.70	1.81					
33.7	44.5	3.06	2.01					
38.6	38.8	3.41	2.28	1.11				
42.4	35.4	3.74	2.50	1.22				
49.1	30.6	4.32	2.88	1.41				
55.1	27.2	4.83	3.22	1.58				
61.4	24.4	5.37	3.59	1.75				
70.2	21.4	6.12	4.09	2.00				
74.3	20.2	6.47	4.32	2.11	1.04			
88.2	17	7.65	5.10	2.49	1.24			
93.6	16	8.10	5.41	2.64	1.31			
106	14.2	9.11	6.08	2.97	1.47	1.00		
121	12.4	10.16	6.78	3.31	1.64	1.12		
137	10.9	11.17	7.44	3.63	1.80	1.22		
144	10.4	8.84	5.90	2.88				
155	9.67				1.96	1.33		
171	8.79	10.49	7.01	3.42				
175	8.57				2.12	1.44		
181	8.28	11.13	7.44					
198	7.57	14.26	9.50	4.63	2.29	1.56	1.14	
204	7.34	12.56	8.39	4.10	2.03	1.39	1.01	
234	6.42	14.36	9.59	4.69	2.32	1.58	1.15	
265	5.65	16.07	10.73	5.24	2.59	1.77	1.29	
300	4.99				2.74	1.86	1.36	
339	4.43				2.82	1.92	1.40	
383	3.91	19.55	13.02	6.34	3.14	2.14	1.56	
383	3.91	20.10	13.39	6.52	3.23	2.20	1.61	
4p LSMV PX brake¹		FCR J01		FCR J01	FCR J01	FCR J01		

1. See chapter C25.

Rated power kW	LSMV PX, LSMV PX brake - 4p 300 to 1 500 ⁻¹ with constant torque			
	Motors	J 10 ⁻³ kg.m2	Brake motors	J 10 ⁻³ kg.m2
0.25	LSMV PX 71 L	0.85	LSMV PX 71 L FCR J01	1.25
0.37	LSMV PX 71 L	1.1	LSMV PX 71 L FCR J01	1.5
0.75	LSMV PX 80 L	2.4	LSMV PX 80 L FCR J01	3.4
1.5	LSMV PX 90 L	4.9	LSMV PX 90 L FCR J01	6.7
2.2	LSMV PX 100 L	5.1	LSMV PX 100 L FCR J01	6.9
3	LSMV PX 100 L	7.1	LSMV PX 100 L FCR J01	8.9

Electromechanical products - variable speed Atmospheres containing explosive dust Compabloc 3000 / LSMV PX - FCR



AGMA I, II, III

**CATEGORY 2
ZONE 21**

Cb 3231
LSMV PX, LSMV PX brake FCR - IP 65 - Cl.F - 400 V Y - 50 Hz
 II 2D T 125°C - ZONE 21

Cb 3231

		LSMV PX (kW)						
		0.25	0.37	0.75	1.5	2.2	3	4
		LSMV PX 4 p						
min ⁻¹	i	71 L	80 L	90 L	100 L		112 MG	
186	8.08	6.32	4.22	2.06				
217	6.92	7.39	4.93	2.41	1.19			
238	6.31	8.10	5.41	2.64	1.31			
263	5.71	8.94	5.97	2.92	1.44			
308	4.88	10.48	7.00	3.42	1.69	1.16		
346	4.33	11.79	7.87	3.85	1.91	1.30		
385	3.89	13.12	8.76	4.28	2.12	1.45	1.05	
438	3.43	14.90	9.95	4.86	2.41	1.64	1.20	
486	3.09	16.55	11.05	5.40	2.67	1.82	1.33	1.00
551	2.72	18.78	12.54	6.13	3.04	2.07	1.51	1.14
589	2.55	20.07	13.40	6.55	3.24	2.21	1.61	1.21
679	2.21	23.13	15.45	7.55	3.74	2.55	1.86	1.40
774	1.94	26.36	17.61	8.61	4.26	2.91	2.12	1.59
857	1.75					3.17	2.31	1.74
969	1.55					3.43	2.51	1.88
1033	1.45					3.36	2.45	1.84
1221	1.23					3.63	2.65	1.99
4p LSMV PX brake¹								
FCR J01¹		FCR J01	FCR J01	FCR J01		FCR J01		FCR J01

1. See chapter C25.

Rated power kW	LSMV PX, LSMV PX brake - 4p 300 to 1 500 ⁻¹ with constant torque			
	Motors	J 10 ⁻³ kg.m2	Brake motors	J 10 ⁻³ kg.m2
0.25	LSMV PX 71 L	0.85	LSMV PX 71 L FCR J01	1.25
0.37	LSMV PX 71 L	1.1	LSMV PX 71 L FCR J01	1.5
0.75	LSMV PX 80 L	2.4	LSMV PX 80 L FCR J01	3.4
1.5	LSMV PX 90 L	4.9	LSMV PX 90 L FCR J01	6.7
2.2	LSMV PX 100 L	5.1	LSMV PX 100 L FCR J01	6.9
3	LSMV PX 100 L	7.1	LSMV PX 100 L FCR J01	8.9
4	LSMV PX 112 MG	15	LSMV PX 112 MG FCR J01	19.3

Electromechanical products - variable speed Atmospheres containing explosive dust Compabloc 3000 / LSMV PX - FCR



AGMA I, II, III

**CATEGORY 2
ZONE 21**

Cb 3233
LSMV PX, LSMV PX brake FCR - IP 65 - CI.F - 400 V Y - 50 Hz
 II 2D T 125°C - ZONE 21

Cb 3233

		LSMV PX (kW)						
		0.25	0.37	0.75	1.5	2.2	3	4
		LSMV PX 4 p						
min ⁻¹	i	71 L	80 L	90 L	100 L	112 MG		
7.36	204	1.46						
8.6	174	1.70	1.14					
9.43	159	1.87	1.25					
10.4	144	2.06	1.38					
12.2	123	2.42	1.62					
13.2	109	2.72	1.82					
15.3	98.2	3.03	2.02					
17.4	86.5	3.44	2.30	1.12				
19.3	77.9	3.82	2.55	1.25				
21.9	68.6	4.34	2.90	1.42				
23.4	64.2	4.63	3.09	1.51				
26.9	55.7	5.34	3.57	1.74				
29.9	50.2	5.93	3.96	1.93				
30.7	48.9							
34.9	43	6.90	4.61	2.25	1.12			
38.3	39.2	7.56	5.05	2.47	1.22			
42.2	35.5	8.33	5.56	2.72	1.35			
49.5	30.3	9.73	6.49	3.17	1.57	1.07		
55.7	26.9	10.91	7.29	3.56	1.76	1.20		
62	24.2	12.11	8.08	3.95	1.96	1.33		
70.4	21.3	13.71	9.15	4.47	2.21	1.51	1.10	
78.2	19.2	15.73	10.10	4.93	2.44	1.67	1.22	
88.7	16.9	16.63	11.09	5.41	2.68	1.83	1.33	1.00
94.8	15.8	17.46	11.64	5.67	2.81	1.91	1.40	1.05
109	13.7	19.32	12.87	6.27	3.10	2.11	1.54	1.16
122	12.3	13.25	8.85					
125	12	21.04	14.02	6.83	3.38	2.30	1.68	1.26
138	10.9					2.47	1.80	1.35
139	10.8	15.06	10.05	4.91	2.43	1.66		
154	9.72	16.72	11.17	5.46	2.70	1.84		
156	9.62					2.67	1.95	1.46
166	9.02					2.79	2.04	1.53
175	8.57	18.98	12.67	6.20	3.07	2.09		
187	8.02	20.28	13.54	6.62	3.28	2.24		
196	7.63					3.10	2.26	1.70
216	6.96	23.38	15.61	7.63	3.78	2.58	1.88	1.41
246	6.1	26.64	17.79	8.70	4.31	2.94	2.14	1.61
272	5.51					3.25	2.37	1.78
308	4.88					3.68	2.68	2.02
328	4.57					3.92	2.86	2.15
388	3.87					4.63	3.38	2.54

4p LSMV PX brake¹

FCR J01 ¹	FCR J01	FCR J01	FCR J01	FCR J01	FCR J01
----------------------	---------	---------	---------	---------	---------

1. See chapter C25.

Rated power kW	LSMV PX, LSMV PX brake - 4p 300 to 1 500 ⁻¹ with constant torque			
	Motors	J 10 ⁻³ kg.m ²	Brake motors	J 10 ⁻³ kg.m ²
0.25	LSMV PX 71 L	0.85	LSMV PX 71 L FCR J01	1.25
0.37	LSMV PX 71 L	1.1	LSMV PX 71 L FCR J01	1.5
0.75	LSMV PX 80 L	2.4	LSMV PX 80 L FCR J01	3.4
1.5	LSMV PX 90 L	4.9	LSMV PX 90 L FCR J01	6.7
2.2	LSMV PX 100 L	5.1	LSMV PX 100 L FCR J01	6.9
3	LSMV PX 100 L	7.1	LSMV PX 100 L FCR J01	8.9
4	LSMV PX 112 MG	15	LSMV PX 112 MG FCR J01	19.3

Electromechanical products - variable speed Atmospheres containing explosive dust Compabloc 3000 / LSMV PX - FCR



AGMA I, II, III

**CATEGORY 2
ZONE 21**

Cb 3331
LSMV PX, LSMV PX brake FCR - IP 65 - Cl.F - 400 V Y - 50 Hz
 II 2D T 125°C - ZONE 21

Cb 3331

		LSMV PX (kW)									
		0.25	0.37	0.75	1.5	2.2	3	4	5.5	7.5	9
		LSMV PX 4 p									
min ⁻¹	i	71 L	80 L	90 L	100 L		112 MG	132 SM	132 M		
191	7.83	12.23	8.16	3.99	1.98	1.35					
212	7.08	13.53	9.04	4.42	2.19	1.49					
237	6.33	15.12	10.10	4.94	2.44	1.67	1.22				
273	5.5	17.41	11.63	5.68	2.81	1.92	1.40	1.05			
308	4.87	19.68	13.14	6.42	3.18	2.17	1.58	1.19			
335	4.47	21.41	14.30	6.99	3.46	2.36	1.72	1.29			
380	3.95	24.23	16.18	7.91	3.92	2.67	1.95	1.47	1.08		
426	3.52	26.66	17.79	8.69	4.30	2.93	2.14	1.61	1.18		
475	3.16	28.01	18.66	9.08	4.50	3.06	2.24	1.68	1.23		
516	2.91	> 30	21.74	10.62	5.26	3.59	2.62	1.97	1.45	1.06	
587	2.58	> 30	24.76	12.10	5.99	4.09	2.98	2.24	1.65	1.21	1.01
667	2.25	> 30	25.18	12.26	6.07	4.13	3.02	2.27	1.66	1.22	1.01
737	2.04					4.35	3.18	2.38	1.75	1.28	1.07
845	1.77					4.10	3.00	2.25	1.65	1.20	1.01
934	1.61							2.25	1.65	1.21	1.01
1029	1.46					4.16	3.04	2.28	1.67	1.22	1.02
1188	1.26							2.40	1.76	1.29	1.07
4p LSMV PX brake¹											
FCR¹		FCR J01	FCR J01	FCR J01	FCR J01		FCR J01	FCR J02			

1. See chapter C25.

Rated power kW	LSMV PX, LSMV PX brake - 4p 300 to 1 500 ¹ with constant torque			
	Motors	J 10 ⁻³ kg.m ²	Brake motors	J 10 ⁻³ kg.m ²
0.25	LSMV PX 71 L	0.85	LSMV PX 71 L FCR J01	1.25
0.37	LSMV PX 71 L	1.1	LSMV PX 71 L FCR J01	1.5
0.75	LSMV PX 80 L	2.4	LSMV PX 80 L FCR J01	3.4
1.5	LSMV PX 90 L	4.9	LSMV PX 90 L FCR J01	6.7
2.2	LSMV PX 100 L	5.1	LSMV PX 100 L FCR J01	6.9
3	LSMV PX 100 L	7.1	LSMV PX 100 L FCR J01	8.9
4	LSMV PX 112 MG	15	LSMV PX 112 MG FCR J01	19.3
5.5	LSMV PX 132 SM	33.4	LSMV PX 132 SM FCR J02	60.4
7.5	LSMV PX 132 M	35	LSMV PX 132 M FCR J02	62
9	LSMV PX 132 M	38.5	LSMV PX 132 M FCR J02	65.5

Electromechanical products - variable speed Atmospheres containing explosive dust Compabloc 3000 / LSMV PX - FCR



AGMA I, II, III

**CATEGORY 2
ZONE 21**

Cb 3333
LSMV PX, LSMV PX brake FCR - IP 65 - Cl.F - 400 V Y - 50 Hz
 II 2D T 125°C - ZONE 21

Cb 3333

		LSMV PX (kW)									
		0.25	0.37	0.75	1.5	2.2	3	4	5.5	7.5	9
		LSMV PX 4 p									
min ⁻¹	i	71 L	80 L	90 L	100 L	112 MG	132 SM	132 M			
7.48	200	2.72	1.81								
8.28	181	3.01	2.01								
9.26	162	3.36	2.24	1.10							
10.7	141	3.87	2.58	1.26							
12.1	125	4.37	2.92	1.43							
13.1	114	4.75	3.17	1.55							
14.8	101	5.38	3.59	1.76							
16.7	90.1	6.04	4.03	1.97							
18.6	80.9	6.73	4.49	2.20	1.09						
20.2	74.4	7.31	4.88	2.39	1.8						
22.7	66.1	8.23	5.50	2.69	1.33						
26.1	57.6	9.45	6.31	3.09	1.53	1.04					
30.8	48.7	10.79	7.21	3.52	1.74	1.19					
34.1	44	11.94	7.98	3.90	1.93	1.32					
38.1	39.4	13.35	8.91	4.36	2.16	1.47	1.07				
43.9	34.2	15.37	10.26	5.02	2.48	1.69	1.24				
49.6	30.2	17.37	11.60	5.67	2.81	1.92	1.40	1.05			
54	27.8	18.90	12.62	6.17	3.05	2.08	1.52	1.14			
61.1	24.6	21.39	14.28	6.98	3.46	2.36	1.72	1.29			
68.5	21.9	24.00	16.03	7.84	3.88	2.65	1.93	1.45	1.07		
76.4	19.6	26.75	17.86	8.73	4.32	2.95	2.15	1.62	1.19		
83	18.1	29.06	19.40	9.49	4.70	3.20	2.34	1.76	1.29		
93.4	16.1	> 30	21.85	10.68	5.29	3.61	2.63	1.98	1.46	1.06	
107	14	> 30	25.08	12.26	6.07	4.14	3.02	2.27	1.67	1.22	1.02
119	12.7					4.56	3.33	2.50	1.84	1.35	1.12
120	12.5	21.39	14.28	6.98	3.46	2.36					
135	11.1	24.00	16.03	7.84	3.88	2.65					
136	11					4.97	3.63	2.73	2.00	1.46	1.22
150	9.98							2.99	2.19	1.60	1.34
151	9.95	26.75	17.86	8.73	4.32	2.95	2.15	1.62			
164	9.16	29.06	19.40	9.49	4.70	3.20					
166	9.06					5.83	4.24	3.20	2.34	1.71	1.43
184	8.14	32.72	21.85	10.68	5.29	3.61	2.63	1.98			
191	7.85							3.51	2.57	1.88	1.57
212	7.09	37.57	25.09	12.26	6.07	4.14	3.02	2.27	1.67	1.22	1.02
234	6.41					4.58	3.34	2.51	1.85	1.35	1.13
268	5.59					5.25	3.83	2.88	2.12	1.55	1.30
297	5.06							3.18	2.34	1.71	1.43
327	4.59					6.40	4.67	3.51	2.58	1.89	1.58
377	3.98							4.05	2.98	2.18	1.82
4p LSMV PX brake¹											
FCR¹		FCR J01	FCR J01	FCR J01	FCR J01	FCR J01	FCR J01	FCR J01	FCR J02		

1. See chapter C25.

Rated power kW	LSMV PX, LSMV PX brake - 4p 300 to 1 500 ⁻¹ with constant torque			
	Motors	J 10 ⁻³ kg.m2	Brake motors	J 10 ⁻³ kg.m2
0.25	LSMV PX 71 L	0.85	LSMV PX 71 L FCR J01	1.25
0.37	LSMV PX 71 L	1.1	LSMV PX 71 L FCR J01	1.5
0.75	LSMV PX 80 L	2.4	LSMV PX 80 L FCR J01	3.4
1.5	LSMV PX 90 L	4.9	LSMV PX 90 L FCR J01	6.7
2.2	LSMV PX 100 L	5.1	LSMV PX 100 L FCR J01	6.9
3	LSMV PX 100 L	7.1	LSMV PX 100 L FCR J01	8.9
4	LSMV PX 112 MG	15	LSMV PX 112 MG FCR J01	19.3
5.5	LSMV PX 132 SM	33.4	LSMV PX 132 SM FCR J02	60.4
7.5	LSMV PX 132 M	35	LSMV PX 132 M FCR J02	62
9	LSMV PX 132 M	38.5	LSMV PX 132 M FCR J02	65.5

Electromechanical products - variable speed Atmospheres containing explosive dust Compabloc 3000 / LSMV PX - FCR



AGMA I, II, III

**CATEGORY 2
ZONE 21**

Cb 3431
LSMV PX, LSMV PX brake FCR - IP 65 - Cl.F - 400 V Y - 50 Hz
 II 2D T 125°C - ZONE 21

Cb 3431

		LSMV PX (kW)											
		0.75	1.5	2.2	3	4	5.5	7.5	9	11	15	18.5	22
		3-phase LSMV PX 4 p											
min ⁻¹	i	80 L	90 L	100 L	112 MG	132 SM	132 M		160 MR	160	180		
185	8.1	8.00	3.95	2.69	1.96	1.48							
220	6.83	10.01	4.95	3.37	2.46	1.85							
244	6.15	11.17	5.51	3.76	2.74	2.06	1.52	1.11					
269	5.57	12.33	6.09	4.15	3.03	2.28	1.68	1.22	1.02				
292	5.13	13.39	6.61	4.51	3.29	2.47	1.82	1.33	1.11				
340	4.41	15.57	7.69	5.24	3.82	2.87	2.12	1.54	1.29	1.06			
365	4.11		8.26	5.63	4.10	3.08	2.27	1.66	1.39	1.13			
417	3.6		9.43	6.43	4.69	3.52	2.59	1.89	1.58	1.29			
472	3.18		10.67	7.27	5.30	3.98	2.93	2.14	1.79	1.46	1.08		
530	2.83		11.87	8.09	5.90	4.43	3.26	2.38	1.99	1.63	1.20		
591	2.54		12.84	8.75	6.38	4.79	3.53	2.58	2.15	1.76	1.29	1.05	
691	2.17		14.28	9.73	7.09	5.33	3.92	2.86	2.39	1.96	1.44	1.17	
761	1.97						4.18	3.06	2.55	2.09	1.54	1.25	1.05
862	1.74						4.09	2.98	2.49	2.04	1.50	1.22	1.02
962	1.56						4.82	3.52	2.94	2.40	1.77	1.44	1.20
1087	1.38						4.76	3.47	2.90	2.37	1.75	1.42	1.19
1210	1.24						4.43	3.24	2.71	2.21	1.63	1.32	1.11
4p LSMV PX brake¹													
FCR¹		FCR J01	FCR J01	FCR J01	FCR J01		FCR J02		FCR J02				

1. See chapter C25.

Rated power kW	LSMV PX, LSMV PX brake - 4p 300 to 1 500 ⁻¹ with constant torque			
	Motors	J 10 ⁻³ kg.m ²	Brake motors	J 10 ⁻³ kg.m ²
0.25	LSMV PX 71 L	0.85	LSMV PX 71 L FCR J01	1.3
0.37	LSMV PX 71 L	1.1	LSMV PX 71 L FCR J01	1.5
0.75	LSMV PX 80 L	2.4	LSMV PX 80 L FCR J01	3.4
1.5	LSMV PX 90 L	4.9	LSMV PX 90 L FCR J01	6.7
2.2	LSMV PX 100 L	5.1	LSMV PX 100 L FCR J01	6.9
3	LSMV PX 100 L	7.1	LSMV PX 100 L FCR J01	8.9
4	LSMV PX 112 MG	15	LSMV PX 112 MG FCR J01	19.3
5.5	LSMV PX 132 SM	33.4	LSMV PX 132 SM FCR J01	60.4
7.5	LSMV PX 132 M	35	LSMV PX 132 M FCR J02	62
9	LSMV PX 132 M	38.5	LSMV PX 132 M FCR J02	65.5
11	LSMV PX 160 MR	45	LSMV PX 160 MR FCR J02	72
15	LSMV PX 160 LU	95	-	-
18.5	LSMV PX 180 MU	147	-	-
22	LSMV PX 180 LU	147	-	-

Electromechanical products - variable speed Atmospheres containing explosive dust Compabloc 3000 / LSMV PX - FCR



AGMA I, II, III

**CATEGORY 2
ZONE 21**

Cb 3433
LSMV PX, LSMV PX brake FCR - IP 65 - Cl.F - 400 V Y - 50 Hz
 II 2D T 125°C - ZONE 21

Cb 3433

		LSMV PX (kW)											
		0.75	1.5	2.2	3	4	5.5	7.5	9	11	15	18.5	22
		3-phase LSMV PX 4 p											
min ⁻¹	i	80 L	90 L	100 L	112 MG	132 SM	132 M	160 MR	160	180			
7.4	204	1.70											
8.7	172	2.02	1.00										
9.7	155	2.24	1.11										
11	140	2.47	1.22										
12	129	2.68	1.32										
14	111	3.11	1.54	1.05									
14	104		1.65	1.12									
17	90.7		1.88	1.28									
19	80.1		2.12	1.44	1.05								
21	71.4		2.37	1.62	1.18								
23	63.9		2.64	1.80	1.31								
27	54.7		3.08	2.10	1.53	1.15							
30	50.3	6.76	3.34	2.28	1.66	1.25							
30	49.6												
34	43.7					1.05							
35	42.5	7.98	3.94	2.69	1.96	1.47							
39	38.2	8.84	4.36	2.97	2.17	1.63	1.20						
43	34.6	9.74	4.81	3.28	2.39	1.80	1.32						
47	31.9	10.54	5.21	3.55	2.59	1.94	1.43	1.05					
55	27.4	12.21	6.03	4.11	3.00	2.25	1.66	1.21	1.01				
59	25.5		6.46	4.40	3.21	2.41	1.78	1.30	1.08				
67	22.4		7.35	5.01	3.65	2.74	2.02	1.47	1.23	1.01			
76	19.8		8.24	5.64	4.11	3.09	2.28	1.66	1.39	1.14			
85	17.6		9.26	6.31	4.60	3.46	2.54	1.86	1.55	1.27			
95	15.8		10.29	7.01	5.11	3.84	2.83	2.07	1.73	1.41	1.04		
111	13.5		11.95	8.14	5.94	4.46	3.28	2.40	2.00	1.64	1.21		
123	12.2						3.61	2.64	2.20	1.80	1.33	1.08	
139	10.8						3.98	2.90	2.43	1.98	1.46	1.18	
155	9.67						4.29	3.13	2.62	2.14	1.57	1.28	1.07
174	8.6						4.62	3.38	2.82	2.31	1.69	1.38	1.15
195	7.69						4.48	3.27	2.74	2.24	1.64	1.34	1.12
219	6.86		14.43	9.83	7.17	5.39	3.96	2.89	2.42	1.98	1.45	1.18	0.99
242	6.21						4.23	3.09	2.58	2.11	1.55	1.26	1.06
274	5.48						4.13	3.02	2.52	2.06	1.52	1.23	1.03
305	4.91						4.87	3.56	2.97	2.43	1.79	1.45	1.22
343	4.37						4.81	3.51	2.93	2.40	1.76	1.43	1.20
384	3.91						4.48	3.27	2.74	2.24	1.64	1.34	1.12

4p LSMV PX brake¹

FCR ¹	FCR J01	FCR J01	FCR J01	FCR J01	FCR J02	FCR J02
------------------	---------	---------	---------	---------	---------	---------

1. See chapter C25.

Rated power kW	LSMV PX. LSMV PX brake - 4p 300 to 1 500 ⁻¹ with constant torque			
	Motors	J 10 ⁻³ kg.m ²	Brake motors	J 10 ⁻³ kg.m ²
0.25	LSMV PX 71 L	0.85	LSMV PX 71 L FCR J01	1.3
0.37	LSMV PX 71 L	1.1	LSMV PX 71 L FCR J01	1.5
0.75	LSMV PX 80 L	2.4	LSMV PX 80 L FCR J01	3.4
1.5	LSMV PX 90 L	4.9	LSMV PX 90 L FCR J01	6.7
2.2	LSMV PX 100 L	5.1	LSMV PX 100 L FCR J01	6.9
3	LSMV PX 100 L	7.1	LSMV PX 100 L FCR J01	8.9
4	LSMV PX 112 MG	15	LSMV PX 112 MG FCR J01	19.3
5.5	LSMV PX 132 SM	33.4	LSMV PX 132 SM FCR J01	60.4
7.5	LSMV PX 132 M	35	LSMV PX 132 M FCR J02	62
9	LSMV PX 132 M	38.5	LSMV PX 132 M FCR J02	65.5
11	LSMV PX 160 MR	45	LSMV PX 160 MR FCR J02	72
15	LSMV PX 160 LU	95	-	-
18.5	LSMV PX 180 MU	147	-	-
22	LSMV PX 180 LU	147	-	-

Electromechanical products - variable speed Atmospheres containing explosive dust Compabloc 3000 / LSMV PX - FCR



AGMA I, II, III

**CATEGORY 2
ZONE 21**

Cb 3531
LSMV PX, LSMV PX brake FCR - IP 65 - Cl.F - 400 V Y - 50 Hz
 II 2D T 125°C - ZONE 21

Cb 3531

LSMV PX (kW)

		1.5	2.2	3	4	5.5	7.5	9	11	15	18.5	22	30
		3-phase LSMV PX 4 p											
min ⁻¹	i	90 L	100 L	112 MG	132 SM	132 M	160 MR	160	180	200			
	8	7.20	4.90	3.56	2.72	1.98	1.44	1.21					
	6.87	8.14	5.55	4.03	3.08	2.23	1.63	1.36					
	6.31	9.20	6.26	4.55	3.48	2.53	1.84	1.54					
	5.5	10.56	7.19	5.22	3.99	2.90	2.12	1.77	1.45	1.06			
	4.85	11.90	8.11	5.89	4.50	3.27	2.39	1.99	1.63	1.20			
	4.35	13.34	9.09	6.60	5.04	3.66	2.67	2.24	1.83	1.34	1.09		
	3.88				5.45	3.96	2.89	2.42	1.98	1.45	1.18		
	3.55								2.17	1.59	1.29	1.09	
	3.07								2.19	1.61	1.30	1.10	
	2.77								2.44	1.79	1.45	1.22	
	2.44									1.90	1.54	1.29	
	2.25									1.96	1.59	1.34	
	2									2.06	1.67	1.40	1.03
	1.79									2.14	1.74	1.46	1.08
	1.60									2.22	1.81	1.52	1.12
	1.46									2.29	1.86	1.56	1.15
	1.28									2.38	1.93	1.63	1.20
4p LSMV PX brake¹													
FCR¹		FCR J01	FCR J01	FCR J01	FCR J02			FCR J02					

1. See chapter C25.

Rated power kW	LSMV PX, LSMV PX brake - 4p 300 to 1 500 ⁻¹ with constant torque			
	Motors	J 10 ⁻³ kg.m2	Brake motors	J 10 ⁻³ kg.m2
1.5	LSMV PX 90 L	4.9	LSMV PX 90 L FCR J01	6.7
2.2	LSMV PX 100 L	5.1	LSMV PX 100 L FCR J01	6.9
3	LSMV PX 100 L	7.1	LSMV PX 100 L FCR J01	8.9
4	LSMV PX 112 MG	15	LSMV PX 112 MG FCR J01	19.3
5.5	LSMV PX 132 SM	33.4	LSMV PX 132 S M FCR J02	60.4
7.5	LSMV PX 132 M	35	LSMV PX 132 M FCR J02	62
9	LSMV PX 132 M	38.5	LSMV PX 132 M FCR J02	65.5
11	LSMV PX 160 MR	45	LSMV PX 160 MR FCR J02	72
15	LSMV PX 160 LU	95	-	-
18.5	LSMV PX 180 MU	147	-	-
22	LSMV PX 180 LU	147	-	-
30	LSMV PX 200 L	230	-	-

Electromechanical products - variable speed Atmospheres containing explosive dust Compabloc 3000 / LSMV PX - FCR



AGMA I, II, III

**CATEGORY 2
ZONE 21**

Cb 3533
LSMV PX, LSMV PX brake FCR - IP 65 - CI.F - 400 V Y - 50 Hz
 II 2D T 125°C - ZONE 21

Cb 3533

		LSMV PX (kW)											
		1.5	2.2	3	4	5.5	7.5	9	11	15	18.5	22	30
		3-phase LSMV PX 4 p											
min ⁻¹	i	90 L	100 L	112 MG	132 SM	132 M	160 MR	160	180	200			
7.5	201	1.62	1.10										
8.7	173	1.88	1.28										
9.4	159	2.04	1.39	1.02									
10.9	138	2.34	1.60	1.17									
12.3	122	2.65	1.81	1.32									
13.6	110	2.94	2.01	1.47	1.10								
15.4	97.5	3.30	2.25	1.65	1.24								
16.8	89.3			1.80	1.35								
19.4	77.2			2.07	1.55	1.13							
21.5	69.8			2.22	1.66	1.21							
24.4	61.4					1.32							
26.5	56.6					1.38	1.01						
30.2	49.7	6.38	4.36	3.19	2.39	1.74	1.28	1.07					
33.4	44.9												
35.1	42.7	7.41	5.05	3.70	2.77	2.02	1.49	1.24					
37.2	40.3												
38.3	39.2	8.04	5.49	4.01	3.01	2.20	1.61	1.35					
43.9	34.2	9.19	6.27	4.59	3.44	2.51	1.85	1.54	1.26				
49.8	30.1	10.38	7.08	5.18	3.88	2.84	2.08	1.74	1.42	1.04			
55.4	27.1	11.52	7.86	5.76	4.31	3.15	2.31	1.93	1.58	1.16			
62.2	24.1	12.90	8.80	6.44	4.83	3.53	2.59	2.16	1.77	1.29	1.05		
67.9	22.1			7.01	5.25	3.84	2.82	2.35	1.92	1.41	1.14		
78.5	19.1			7.64	5.72	4.18	3.07	2.56	2.10	1.53	1.25	1.05	
87.2	17.2			8.87	6.64	4.85	3.56	2.98	2.43	1.78	1.45	1.22	
98.7	15.2					5.31	3.90	3.26	2.66	1.95	1.58	1.33	
107	14					5.59	4.11	3.43	2.80	2.05	1.67	1.40	1.03
121	12.4					6.18	4.54	3.79	3.10	2.27	1.84	1.55	1.14
135	11.1					6.60	4.85	4.05	3.31	2.42	1.97	1.66	1.22
151	9.94								3.65	2.68	2.17	1.83	1.34
165	9.07								3.88	2.84	2.31	1.94	1.43
189	7.92								4.24	3.11	2.52	2.12	1.56
209	7.18					5.60	4.11	3.43	2.80	2.05	1.67	1.40	1.03
235	6.38					6.18	4.54	3.79	3.10	2.27	1.84	1.55	1.14
263	5.7					6.60	4.85	4.05	3.31	2.42	1.97	1.65	1.22
294	5.1								4.34	3.18	2.58	2.17	1.60
322	4.66								4.56	3.34	2.72	2.28	1.68
369	4.07								4.89	3.58	2.91	2.44	1.80

4p LSMV PX brake¹

FCR ¹	FCR J01	FCR J01	FCR J01	FCR J02	FCR J02
------------------	---------	---------	---------	---------	---------

1. See chapter C25.

Rated power kW	LSMV PX, LSMV PX brake - 4p 300 to 1 500 ⁻¹ with constant torque			
	Motors	J 10 ⁻³ kg.m ²	Brake motors	J 10 ⁻³ kg.m ²
1.5	LSMV PX 90 L	4.9	LSMV PX 90 L FCR J01	6.7
2.2	LSMV PX 100 L	5.1	LSMV PX 100 L FCR J01	6.9
3	LSMV PX 100 L	7.1	LSMV PX 100 L FCR J01	8.9
4	LSMV PX 112 MG	15	LSMV PX 112 MG FCR J01	19.3
5.5	LSMV PX 132 SM	33.4	LSMV PX 132 S M FCR J02	60.4
7.5	LSMV PX 132 M	35	LSMV PX 132 M FCR J02	62
9	LSMV PX 132 M	38.5	LSMV PX 132 M FCR J02	65.5
11	LSMV PX 160 MR	45	LSMV PX 160 MR FCR J02	72
15	LSMV PX 160 LU	95	-	-
18.5	LSMV PX 180 MU	147	-	-
22	LSMV PX 180 LU	147	-	-
30	LSMV PX 200 L	230	-	-

