

# Electromechanical products - variable speed Atmospheres containing explosive dust Compabloc 3000 / LSMV



**CATEGORY 3  
ZONE 22**

## General information



Compabloc 3000 geared motors with helical gears are used to adapt the speed of the electric motor to that of the driven machine. Their size is therefore determined by the motor power ( $P$ ) expressed in kilowatts (kW) and the output rotation speed of the gear box ( $n_S$ ) in revolutions per minute ( $\text{min}^{-1}$ ). The main characteristic of the speed reducers is the rated output torque ( $M_{nS}$ ) expressed in Newton-metres (N.m) :

$$M_{nS} = \frac{P \times 9550}{n_S} \times \text{efficiency}$$

A range of six sizes : 30, 31, 32, 33, 34, 35.  
Rated output torque : from 10 N.m to 3 150 N.m.  
Power rating : from 0.09 to 30 kW.  
Reduction ratio : from 1.25 to 204.  
High efficiency : 95 % to 98 %.  
Reversible.  
Silent operation.

Gearboxes within the Compabloc 3000 range, with or without FCR brake option have been subject to a certification made by INERIS.

## Construction

### Description of Compabloc (Cb) gearboxes

Component	Materials	Remarks
Housing	Aluminium (30) Cast iron (31 to 35)	- use of cast aluminium - use of ENGJL-200 cast iron (flake graphite : tensile strength 200 MPa) single component perlite to ensure the complete sealing of the unit - monobloc with reinforced internal ribbing to absorb vibrations and noise and to increase rigidity - with S baseplate, BT form or with BS, BD flanges. They are compact and meet industrial application-related requirements
Gears	Steel Ni Cr Mo	- cut by gear hob, they are heat treated by cementation, then undergo a final machining. The quality and the precision of the gear cutting allow maximum torque with minimum noise level
Seals	Nitrile	- sealing ring on the motor side - anti-dust lipseal collar according to DIN 3760 AS form - flat seal beneath the hatch
Shaft	Steel	- grinding of the sealing surfaces - key according to ISO R773 - diameter tolerances in accordance with NFE 22-051 and ISO R775 - tapped holes at the shaft end in accordance with DIN 332 version D for mounting connecting equipment
Lubrication	Oil	- in accordance with ISO 6743 / 6 - supplied with the quantity of oil corresponding to the operating position, it is fitted with drain, level and vent plugs (Cb 30-- exclusive)
Mounting		MI : geared motor with variable speed integrated motor MU : geared motor with variable speed IEC motor, with universal mounting
Standard motor		LSMV : - multi-voltage 220/380 V - 230/400 V - 240/415 V - sheet metal fan cover, fitted on request with a drip cover for operation in vertical position (shaft end facing down) - metallic terminal box fitted with cable gland - IP 55 motor protection
Brake motors		FCR : failsafe brake asynchronous motor, ranging from 0.18 to 11 kW, IP 55 protection (LS 71 to 160)
Other motors		See pages D0.6 to D0.9.
Finish	Paint	Shade : RAL 6000 (green), system I (1 polyurethane vinyl layer of 25/30 $\mu\text{m}$ )

# Electromechanical products - variable speed Atmospheres containing explosive dust Compabloc 3000 / LSMV

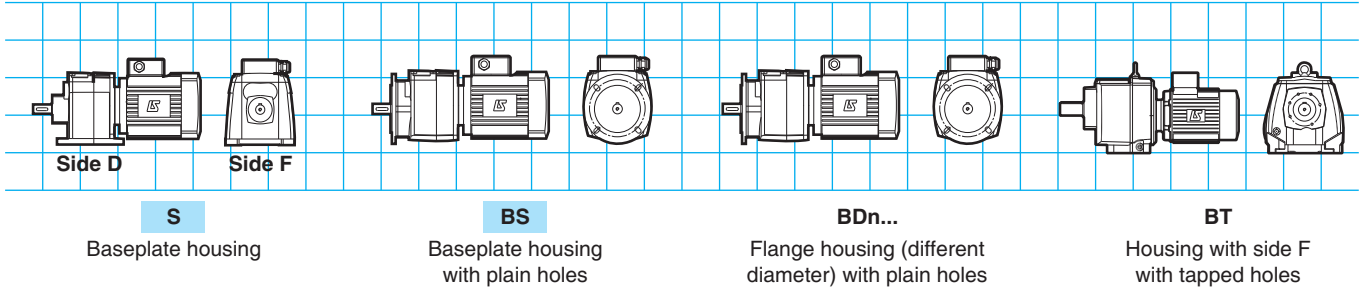


**CATEGORY 3  
ZONE 22**

## Forms and operating positions

**Standard position** : gearbox seen from side F, motor to the rear, side D facing the ground.

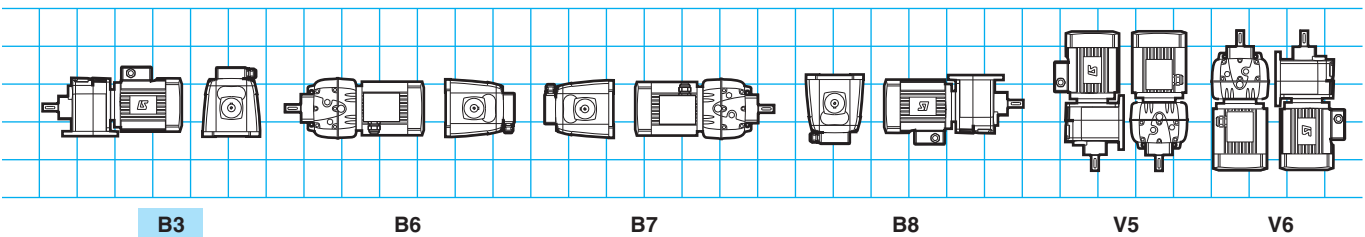
### 1 - Definition of mounting type : S, BS, BDn..., BT



### 2 - Definition of operating position

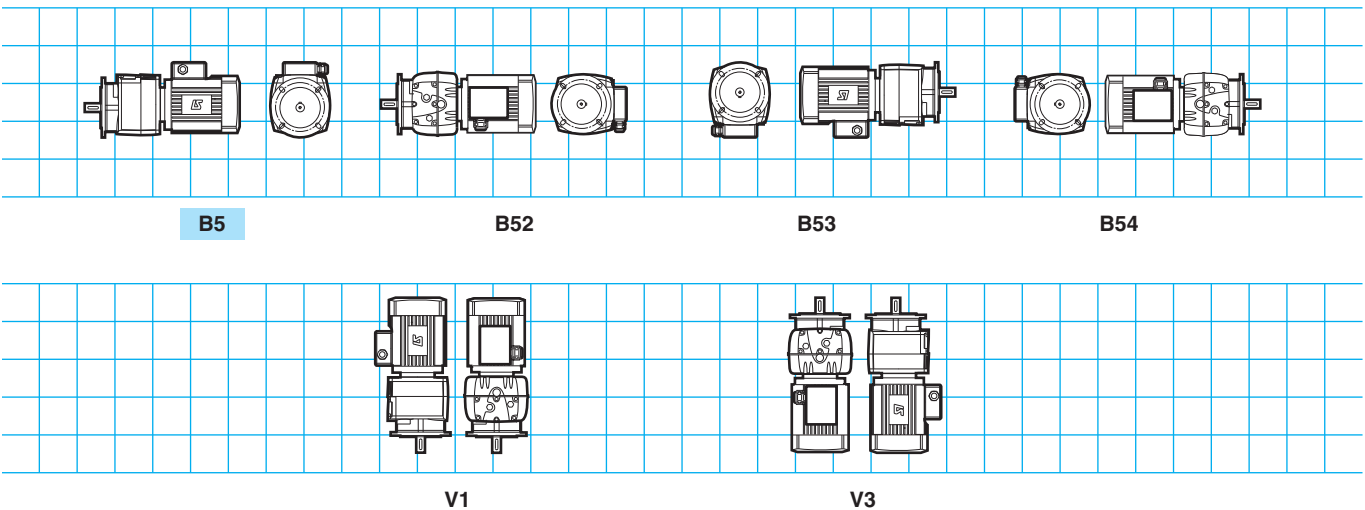
#### 2.1- Mounting with S baseplate

**Compabloc 1-train** : Cb 3031 M\* and 3131 to 3531, **Compabloc multi-train** : Cb 3032 and 3033 M\* - Cb 3133 to 3533



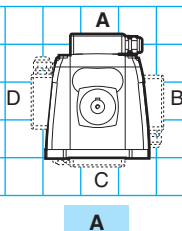
#### 2.2- Mounting with BS, BDn... flanges, or BT form

**Compabloc 1-train** : Cb 3031 M\* and 3131 to 3531, **Compabloc multi-train** : Cb 3032 and 3033 M\* - Cb 3133 to 3533

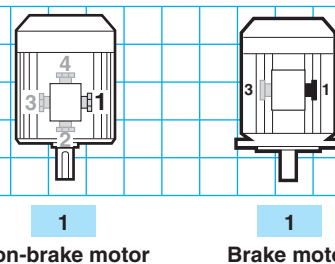


*M\* : For these multi-position geared motors (M), the positions should only be specified if the following are necessary : a vent plug on the gearbox and/or condensation water drain plug on the motor. Positions V3 and V6 MUST be specified.*

### 3 - Terminal box positions



### 4 - Cable gland positions



# Electromechanical products - variable speed Atmospheres containing explosive dust Compabloc 3000 / LSMV



**CATEGORY 3  
ZONE 22**

## Adaptation possibilities

Leroy-Somer offers several drives for its gearboxes which meet a diverse range of needs. They are described below and offered in this catalogue.

For other drives, consult Leroy-Somer technical specialists who will be pleased to assist you.

Compabloc gearboxes can be used in conjunction with the following drives :

**fixed-speed 3-phase asynchronous motors :**

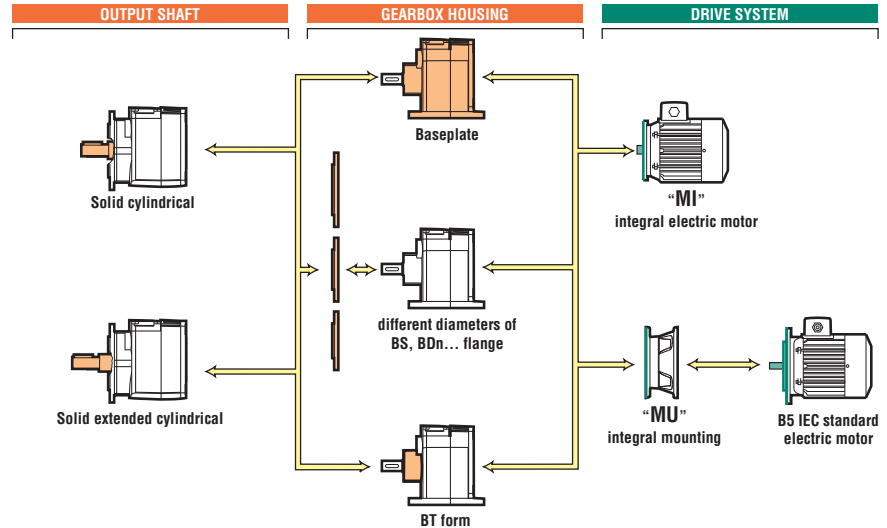
- LS motor from 0.25 to 30 kW,
- FCR brake LS motor from 0.25 to 15 kW,
- FLS motor from 0.55 to 30 kW,
- FCR brake FLS motor from 0.55 to 9 kW.

**electronic variable speed motors :**

- centralised system with separate drive**
- LSMV motor from 0.25 to 30 kW,
- LSMV...FCR brake motor from 0.25 to 11 kW.

**decentralised system with built-in drive**

- VARMECA from 0.25 to 4 kW.



## Designation / Coding

ATEX II 3D T 125°C	Cb	3333	B3	S	80.9	MI	4P	LSMV 80 L	0.75 kW	230/400 V 50 Hz
Specific application	Compabloc gearbox type	Manufacturer index and size	Operating position	Mounting type	Exact reduction	Input type	No. of poles	Series, frame size, manufacturer index	Rated power	Voltage and mains frequency

Codification example in ATEX zone 22 :

Compabloc 3333 B3 0.75 kW, 18 min<sup>-1</sup>, class III

**Designation**

Cb 3333 B3 S 80,9 MI 4P, LSMV 80, 0.75 kW 230/400 V - 50 Hz - II 3D T125° C.

All the products in this catalogue have a code.

The coding table is incorporated in the price list with the list of designations.

Each electromechanical product is classified first in order of power and then in order of speed.

# Electromechanical products - variable speed Atmospheres containing explosive dust Compabloc 3000 / LSMV



## Selection

**CATEGORY 3  
ZONE 22**

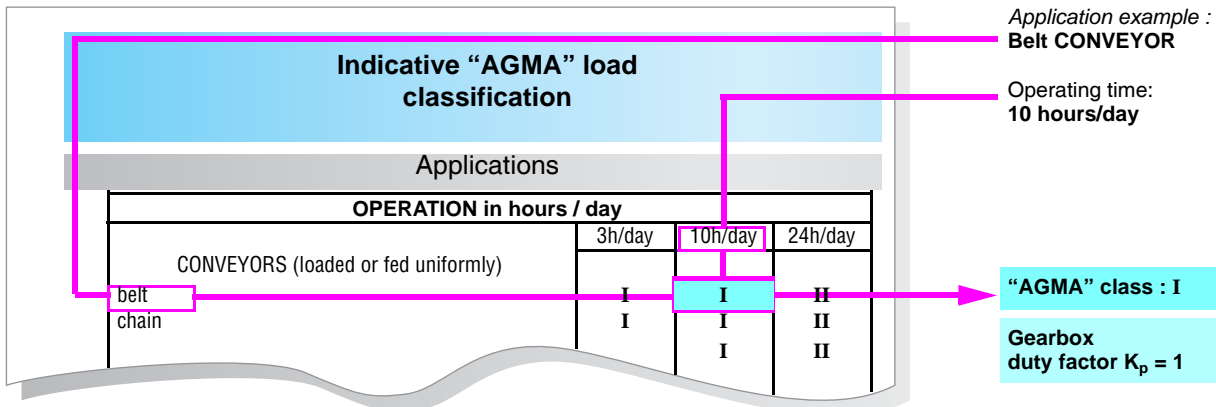
The selection of a gearbox or of a geared motor should take account of the application. Some of these applications are listed in the indicative "AGMA" load classification, page D0.10.

The opposite table summarises the relationship between the "AGMA" class and the gearbox duty factor  $K_p$ .

"AGMA" class	Gearbox duty factor $K_p$
I	1
II	1.4
III	2

### 1<sup>st</sup> case. – Your application is listed

Follow the indicative "AGMA" load classification table, page D0.10 of this catalogue. ▼



### 2<sup>nd</sup> case. – Your application is not listed

The "AGMA" selection class is defined by the daily operating time and by the application operating type, according to the table below. ▼

Type of application	Daily operating time	"AGMA" class
Shock-free, few starts	10 hours / day	I
Damped shocks	10 hours / day	II
Shock-free, few starts	24 hours / day	II
Violent shocks, many starts	10 hours / day	III
Damped shocks	24 hours / day	III

# Electromechanical products - variable speed Atmospheres containing explosive dust Compabloc 3000 / LSMV



**CATEGORY 3  
ZONE 22**

## Conditions

**Cb 3000 : S, BT, BS, BDn  
LSMV, LSMV brake FCR - IP 55 - Cl.F - 400 V Y - 50 Hz  
II 3D T 125°C - ZONE 22**

Inputs		Maximum quantity by order					
		Cb 3031	Cb 31...3531	Cb 3032/3033	Cb 31/32/3333	Cb 3433	Cb 3533
MI LSMV	0.25-4 kW	5	5	5	5	5	5
	5.5-9 kW	-	5	-	5	5	5
	11 kW	-		-	-		
	15-30 kW	-		-	-		
MI LSMV FCR	0.25-4 kW	5	5	5	5	5	5
	5.5-7.5 kW	-	3	-	3	3	3
	9-11 kW	-		-	-		
MU LSMV	0.25-9 kW	5	5	5	5	5	5
	11 kW	-		-	-		
	15-30 kW	-		-	-		
MU LSMV FCR	0.25-4 kW	5	5	5	5	5	5
	5.5-9 kW	-	3	-	3	3	3
	11 kW	-		-	-		

Mechanical options						
	S	BS	BD1	BD2	BD3	BT
Cb 3031					-	
Cb 31...3531				-	-	
Mounting	Page(s) of dimensions corresponding to mounting					
MI	D2.18	D2.20	D2.21	D2.21	-	D2.19
MU	D2.32-33	D2.32-33	D2.32-33	D2.32-33	-	D2.32-33

Mechanical options						
	S	BS	BD1	BD2	BD3	BT
Cb 3032/3033/3133						
Cb 32/33/34/3533						
Mounting	Page(s) of dimensions corresponding to mounting					
MI	D2.22-23	D2.26-27	D2.28-29	D2.30	D2.31	D2.24-25
MU	D2.32-33	D2.32-33	D2.32-33	D2.32-33	D2.32-33	D2.32-33

Inputs 4p / MI-MU	Mains supply	Brake options and VV				
	230/400V	DLRA	Drip cover	TRR	Encoder	VF
LSMV	0.25-3 kW	-	-	-		-
	4 kW	-	-	-		-
	5.5-9 kW	-	-	-		-
	11 kW	-	-	-		-
	15-30 kW	-	-	-		
LSMV FCR	0.25-9 kW			-		-
	11 kW			-		-



# Electromechanical products - variable speed Atmospheres containing explosive dust Compabloc 3000 / LSMV



AGMA I, II, III

**CATEGORY 3  
ZONE 22**

**Cb 3031**  
LSMV, LSMV brake FCR - IP 55 - Cl.F - 400 Y - 50 Hz  
 II 3D T 125°C - ZONE 22

## Cb 3031

		LSMV (kW)						
		0.25	0.37	0.75	1.5	2.2	3	4
		LSMV 4 p						
min <sup>-1</sup>	i	71 L	80 L	90 L	100 L	112 MG		
185	8.13	1.26						
208	7.22	1.41						
234	6.4	1.60	1.07					
258	5.82	1.76	1.17					
290	5.17	1.98	1.32					
327	4.58	2.23	1.49					
368	4.08	2.51	1.67					
414	3.63	2.82	1.88					
464	3.24	3.16	2.11	1.03				
545	2.75	3.71	2.48	1.21				
588	2.55	4.01	2.68	1.31				
685	2.19	4.66	3.11	1.52				
767	1.96	5.22	3.49	1.70				
821	1.83	5.59	3.74	1.83				
975	1.54	6.64	4.43	2.17				
1026	1.46	6.99	4.67	2.28				
1136	1.32	7.72	5.16	2.52				
<b>4p LSMV brake<sup>1</sup></b>		FCR J01		FCR J01				
<b>FCR J01<sup>1</sup></b>		FCR J01		FCR J01				

1. See chapter C26.

Rated power kW	LSMV, LSMV brake - 4p 300 to 1 500 <sup>-1</sup> with constant torque			
	Motors	J 10 <sup>-3</sup> kg.m2	Brake motors	J 10 <sup>-3</sup> kg.m2
0.25	LSMV 71 L	1.25	LSMV 71 L FCR J01	1.25
0.37	LSMV 71 L	1.5	LSMV 71 L FCR J01	1.5
0.75	LSMV 80 L	3.4	LSMV 80 L FCR J01	3.4

# Electromechanical products - variable speed Atmospheres containing explosive dust Compabloc 3000 / LSMV



AGMA I, II, III

**CATEGORY 3  
ZONE 22**

**Cb 3032-3033**  
LSMV, LSMV brake FCR - IP 55 - Cl.F - 400 Y - 50 Hz  
 II 3D T 125°C - ZONE 22

## Cb 3032 - 3033

		LSMV (kW)						
		0.25	0.37	0.75	1.5	2.2	3	4
		LSMV 4 p						
min <sup>-1</sup>	i	71 L	80 L	90 L	100 L	112 MG		
21.7	69.1						<b>Cb 3033</b>	
23.4	64.1							
27.3	55	<b>1.07</b>						
30.5	49.2	<b>1.20</b>						
32.7	45.9	<b>1.28</b>						
38.8	38.7	<b>1.52</b>	<b>1.01</b>					
40.9	36.7	<b>1.60</b>	<b>1.07</b>					
33.1	45.4	<b>1.30</b>					<b>Cb 3032</b>	
37.2	40.3	<b>1.46</b>						
42	35.7	<b>1.64</b>	<b>1.10</b>					
46.2	32.5	<b>1.80</b>	<b>1.20</b>					
52	28.8	<b>2.02</b>	<b>1.35</b>					
58.6	25.6	<b>2.28</b>	<b>1.52</b>					
65.9	22.8	<b>2.55</b>	<b>1.71</b>					
74.1	20.2	<b>2.87</b>	<b>1.91</b>					
83	18.1	<b>3.20</b>	<b>2.14</b>	<b>1.04</b>				
97.7	15.4	<b>3.75</b>	<b>2.51</b>	<b>1.22</b>				
105	14.2	<b>4.04</b>	<b>2.70</b>	<b>1.32</b>				
123	12.2	<b>4.68</b>	<b>3.13</b>	<b>1.53</b>				
137	10.9	<b>5.23</b>	<b>3.49</b>	<b>1.71</b>				
147	10.2	<b>5.59</b>	<b>3.73</b>	<b>1.82</b>				
175	8.59	<b>6.60</b>	<b>4.40</b>	<b>2.15</b>				
184	8.16	<b>6.93</b>	<b>4.63</b>	<b>2.26</b>				
203	7.38	<b>7.62</b>	<b>5.09</b>	<b>2.48</b>				
<b>4p LSMV brake<sup>1</sup></b>		FCR J01		FCR J01				
<b>FCR J01<sup>1</sup></b>		FCR J01		FCR J01				

1. See chapter C26.

Rated power kW	LSMV, LSMV brake - 4p 300 to 1 500 <sup>-1</sup> with constant torque			
	Motors	J 10 <sup>-3</sup> kg.m <sup>2</sup>	Brake motors	J 10 <sup>-3</sup> kg.m <sup>2</sup>
<b>0.25</b>	LSMV 71 L	1.25	LSMV 71 L FCR J01	1.25
<b>0.37</b>	LSMV 71 L	1.5	LSMV 71 L FCR J01	1.5
<b>0.75</b>	LSMV 80 L	3.4	LSMV 80 L FCR J01	3.4

# Electromechanical products - variable speed Atmospheres containing explosive dust Compabloc 3000 / LSMV



AGMA I, II, III

**CATEGORY 3  
ZONE 22**

**Cb 3131**  
LSMV, LSMV brake FCR - IP 55 - Cl.F - 400 Y - 50 Hz  
 II 3D T 125°C - ZONE 22

## Cb 3131

		LSMV (kW)						
		0.25	0.37	0.75	1.5	2.2	3	4
		LSMV 4 p						
min <sup>-1</sup>	i	71 L	80 L	90 L	100 L	112 MG		
190	7.91	4.04	3.55					
209	7.17	4.45	3.91					
240	6.25	5.11	3.41	1.67				
264	5.69	5.61	3.75	1.83				
305	4.92	6.49	4.34	2.12	1.05			
342	4.38	7.28	4.86	2.38	1.18			
382	3.93	8.13	5.43	2.65	1.31			
436	3.44	9.29	6.20	3.03	1.50	1.02		
462	3.25	9.82	6.56	3.21	1.59	1.08		
548	2.74	11.66	7.79	3.81	1.89	1.29		
582	2.58	12.38	8.27	4.04	2.00	1.36	1.00	
656	2.29	13.97	9.33	4.56	2.26	1.54	1.12	
750	2	15.44	10.30	5.03	2.49	1.70	1.24	
852	1.76	16.39	10.91	5.31	2.63	1.79	1.31	
964	1.56				2.74	1.86	1.36	
1088	1.38				2.84	1.93	1.41	
1231	1.22	18.92	12.60	6.14	3.04	2.07	1.51	
1293	1.16	19.52	13.00	6.33	3.13	2.14	1.56	
<b>4p LSMV brake<sup>1</sup></b>		FCR J01		FCR J01	FCR J01	FCR J01		
<b>FCR J01<sup>1</sup></b>		FCR J01		FCR J01	FCR J01	FCR J01		

1. See chapter C26.

Rated power kW	LSMV, LSMV brake - 4p 300 to 1 500 <sup>-1</sup> with constant torque			
	Motors	J 10 <sup>-3</sup> kg.m <sup>2</sup>	Brake motors	J 10 <sup>-3</sup> kg.m <sup>2</sup>
0.25	LSMV 71 L	1.25	LSMV 71 L FCR J01	1.25
0.37	LSMV 71 L	1.5	LSMV 71 L FCR J01	1.5
0.75	LSMV 80 L	3.4	LSMV 80 L FCR J01	3.4
1.5	LSMV 90 L	6.7	LSMV 90 L FCR J01	6.7
2.2	LSMV 100 L	6.9	LSMV 100 L FCR J01	6.9
3	LSMV 100 L	8.9	LSMV 100 L FCR J01	8.9

# Electromechanical products - variable speed Atmospheres containing explosive dust Compabloc 3000 / LSMV



AGMA I, II, III

**CATEGORY 3  
ZONE 22**

**Cb 3133**  
LSMV, LSMV brake FCR - IP 55 - Cl.F - 400 Y - 50 Hz  
 II 3D T 125°C - ZONE 22

## Cb 3133

		LSMV (kW)						
		0.25	0.37	0.75	1.5	2.2	3	4
		LSMV 4 p						
min <sup>-1</sup>	i	71 L	80 L	90 L	100 L	112 MG		
9.49	158							
10.4	144							
12.1	124	1.07						
13.5	111	1.19						
16	99.4	1.29						
17.3	87	1.42						
18.2	82.2	1.48						
21.7	69.2	1.66	1.11					
23	65.3	1.73	1.15					
25.9	57.8	1.87	1.25					
30.5	49.1	2.70	1.81					
33.7	44.5	3.06	2.01					
38.6	38.8	3.41	2.28	1.11				
42.4	35.4	3.74	2.50	1.22				
49.1	30.6	4.32	2.88	1.41				
55.1	27.2	4.83	3.22	1.58				
61.4	24.4	5.37	3.59	1.75				
70.2	21.4	6.12	4.09	2.00				
74.3	20.2	6.47	4.32	2.11	1.04			
88.2	17	7.65	5.10	2.49	1.24			
93.6	16	8.10	5.41	2.64	1.31			
106	14.2	9.11	6.08	2.97	1.47	1.00		
121	12.4	10.16	6.78	3.31	1.64	1.12		
137	10.9	11.17	7.44	3.63	1.80	1.22		
144	10.4	8.84	5.90	2.88				
155	9.67				1.96	1.33		
171	8.79	10.49	7.01	3.42				
175	8.57				2.12	1.44		
181	8.28	11.13	7.44					
198	7.57	14.26	9.50	4.63	2.29	1.56	1.14	
204	7.34	12.56	8.39	4.10	2.03	1.39	1.01	
234	6.42	14.36	9.59	4.69	2.32	1.58	1.15	
265	5.65	16.07	10.73	5.24	2.59	1.77	1.29	
300	4.99				2.74	1.86	1.36	
339	4.43				2.82	1.92	1.40	
383	3.91	19.55	13.02	6.34	3.14	2.14	1.56	
383	3.91	20.10	13.39	6.52	3.23	2.20	1.61	
<b>4p LSMV brake<sup>1</sup></b>		FCR J01		FCR J01	FCR J01	FCR J01		

1. See chapter C26.

Rated power kW	LSMV, LSMV brake - 4p 300 to 1 500 <sup>-1</sup> with constant torque			
	Motors	J 10 <sup>-3</sup> kg.m2	Brake motors	J 10 <sup>-3</sup> kg.m2
0.25	LSMV 71 L	1.25	LSMV 71 L FCR J01	1.25
0.37	LSMV 71 L	1.5	LSMV 71 L FCR J01	1.5
0.75	LSMV 80 L	3.4	LSMV 80 L FCR J01	3.4
1.5	LSMV 90 L	6.7	LSMV 90 L FCR J01	6.7
2.2	LSMV 100 L	6.9	LSMV 100 L FCR J01	6.9
3	LSMV 100 L	8.9	LSMV 100 L FCR J01	8.9

# Electromechanical products - variable speed Atmospheres containing explosive dust Compabloc 3000 / LSMV



AGMA I, II, III

**CATEGORY 3  
ZONE 22**

**Cb 3231**  
LSMV, LSMV brake FCR - IP 55 - Cl.F - 400 Y - 50 Hz  
 II 3D T 125°C - ZONE 22

## Cb 3231

		LSMV (kW)						
		0.25	0.37	0.75	1.5	2.2	3	4
		LSMV 4 p						
min <sup>-1</sup>	i	71 L	80	90 L	100 L	112 MG		
186	8.08	6.32	4.22	2.06				
217	6.92	7.39	4.93	2.41	1.19			
238	6.31	8.10	5.41	2.64	1.31			
263	5.71	8.94	5.97	2.92	1.44			
308	4.88	10.48	7.00	3.42	1.69	1.16		
346	4.33	11.79	7.87	3.85	1.91	1.30		
385	3.89	13.12	8.76	4.28	2.12	1.45	1.05	
438	3.43	14.90	9.95	4.86	2.41	1.64	1.20	
486	3.09	16.55	11.05	5.40	2.67	1.82	1.33	1.00
551	2.72	18.78	12.54	6.13	3.04	2.07	1.51	1.14
589	2.55	20.07	13.40	6.55	3.24	2.21	1.61	1.21
679	2.21	23.13	15.45	7.55	3.74	2.55	1.86	1.40
774	1.94	26.36	17.61	8.61	4.26	2.91	2.12	1.59
857	1.75					3.17	2.31	1.74
969	1.55					3.43	2.51	1.88
1033	1.45					3.36	2.45	1.84
1221	1.23					3.63	2.65	1.99
<b>4p LSMV brake<sup>1</sup></b>								
<b>FCR J01<sup>1</sup></b>		FCR J01	FCR J01	FCR J01	FCR J01	FCR J01	FCR J01	FCR J01

1. See chapter C26.

Rated power kW	LSMV, LSMV brake - 4p 300 to 1 500 <sup>-1</sup> with constant torque			
	Motors	J 10 <sup>-3</sup> kg.m <sup>2</sup>	Brake motors	J 10 <sup>-3</sup> kg.m <sup>2</sup>
0.25	LSMV 71 L	1.25	LSMV 71 L FCR J01	1.25
0.37	LSMV 71 L	1.5	LSMV 71 L FCR J01	1.5
0.75	LSMV 80 L	3.4	LSMV 80 L FCR J01	3.4
1.5	LSMV 90 L	6.7	LSMV 90 L FCR J01	6.7
2.2	LSMV 100 L	6.9	LSMV 100 L FCR J01	6.9
3	LSMV 100 L	8.9	LSMV 100 L FCR J01	8.9
4	LSMV 112 MG	19.3	LSMV 112 MG FCR J01	19.3

# Electromechanical products - variable speed Atmospheres containing explosive dust Compabloc 3000 / LSMV



AGMA I, II, III

**CATEGORY 3  
ZONE 22**

**Cb 3233**  
LSMV, LSMV brake FCR - IP 55 - Cl.F - 400 Y - 50 Hz  
 II 3D T 125°C - ZONE 22

## Cb 3233

		LSMV (kW)						
		0.25	0.37	0.75	1.5	2.2	3	4
		LSMV 4 p						
min <sup>-1</sup>	i	71 L	80 L	90 L	100 L	112 MG		
7.36	204	1.46						
8.6	174	1.70	1.14					
9.43	159	1.87	1.25					
10.4	144	2.06	1.38					
12.2	123	2.42	1.62					
13.2	109	2.72	1.82					
15.3	98.2	3.03	2.02					
17.4	86.5	3.44	2.30	1.12				
19.3	77.9	3.82	2.55	1.25				
21.9	68.6	4.34	2.90	1.42				
23.4	64.2	4.63	3.09	1.51				
26.9	55.7	5.34	3.57	1.74				
29.9	50.2	5.93	3.96	1.93				
30.7	48.9							
34.9	43	6.90	4.61	2.25	1.12			
38.3	39.2	7.56	5.05	2.47	1.22			
42.2	35.5	8.33	5.56	2.72	1.35			
49.5	30.3	9.73	6.49	3.17	1.57	1.07		
55.7	26.9	10.91	7.29	3.56	1.76	1.20		
62	24.2	12.11	8.08	3.95	1.96	1.33		
70.4	21.3	13.71	9.15	4.47	2.21	1.51	1.10	
78.2	19.2	15.73	10.10	4.93	2.44	1.67	1.22	
88.7	16.9	16.63	11.09	5.41	2.68	1.83	1.33	1.00
94.8	15.8	17.46	11.64	5.67	2.81	1.91	1.40	1.05
109	13.7	19.32	12.87	6.27	3.10	2.11	1.54	1.16
122	12.3	13.25	8.85					
125	12	21.04	14.02	6.83	3.38	2.30	1.68	1.26
138	10.9					2.47	1.80	1.35
139	10.8	15.06	10.05	4.91	2.43	1.66		
154	9.72	16.72	11.17	5.46	2.70	1.84		
156	9.62					2.67	1.95	1.46
166	9.02					2.79	2.04	1.53
175	8.57	18.98	12.67	6.20	3.07	2.09		
187	8.02	20.28	13.54	6.62	3.28	2.24		
196	7.63					3.10	2.26	1.70
216	6.96	23.38	15.61	7.63	3.78	2.58	1.88	1.41
246	6.1	26.64	17.79	8.70	4.31	2.94	2.14	1.61
272	5.51					3.25	2.37	1.78
308	4.88					3.68	2.68	2.02
328	4.57					3.92	2.86	2.15
388	3.87					4.63	3.38	2.54

4p LSMV brake<sup>1</sup>

FCR J01 <sup>1</sup>	FCR J01	FCR J01	FCR J01	FCR J01	FCR J01
----------------------	---------	---------	---------	---------	---------

1. See chapter C26.

Rated power kW	LSMV, LSMV brake - 4p 300 to 1 500 <sup>-1</sup> with constant torque			
	Motors	J 10 <sup>-3</sup> kg.m <sup>2</sup>	Brake motors	J 10 <sup>-3</sup> kg.m <sup>2</sup>
0.25	LSMV 71 L	1.25	LSMV 71 L FCR J01	1.25
0.37	LSMV 71 L	1.5	LSMV 71 L FCR J01	1.5
0.75	LSMV 80 L	3.4	LSMV 80 L FCR J01	3.4
1.5	LSMV 90 L	6.7	LSMV 90 L FCR J01	6.7
2.2	LSMV 100 L	6.9	LSMV 100 L FCR J01	6.9
3	LSMV 100 L	8.9	LSMV 100 L FCR J01	8.9
4	LSMV 112 MG	19.3	LSMV 112 MG FCR J01	19.3

# Electromechanical products - variable speed Atmospheres containing explosive dust Compabloc 3000 / LSMV



AGMA I, II, III

**CATEGORY 3  
ZONE 22**

**Cb 3331**  
LSMV, LSMV brake FCR - IP 55 - Cl.F - 400 Y - 50 Hz  
 II 3D T 125°C - ZONE 22

## Cb 3331

		LSMV (kW)									
		0.25	0.37	0.75	1.5	2.2	3	4	5.5	7.5	9
		LSMV 4 p									
min <sup>-1</sup>	i	71 L	80 L	90 L	100 L	112 MG	132 SM	132 M			
191	7.83	12.23	8.16	3.99	1.98	1.35					
212	7.08	13.53	9.04	4.42	2.19	1.49					
237	6.33	15.12	10.10	4.94	2.44	1.67	1.22				
273	5.5	17.41	11.63	5.68	2.81	1.92	1.40	1.05			
308	4.87	19.68	13.14	6.42	3.18	2.17	1.58	1.19			
335	4.47	21.41	14.30	6.99	3.46	2.36	1.72	1.29			
380	3.95	24.23	16.18	7.91	3.92	2.67	1.95	1.47	1.08		
426	3.52	26.66	17.79	8.69	4.30	2.93	2.14	1.61	1.18		
475	3.16	28.01	18.66	9.08	4.50	3.06	2.24	1.68	1.23		
516	2.91	> 30	21.74	10.62	5.26	3.59	2.62	1.97	1.45	1.06	
587	2.58	> 30	24.76	12.10	5.99	4.09	2.98	2.24	1.65	1.21	1.01
667	2.25	> 30	25.18	12.26	6.07	4.13	3.02	2.27	1.66	1.22	1.01
737	2.04					4.35	3.18	2.38	1.75	1.28	1.07
845	1.77					4.10	3.00	2.25	1.65	1.20	1.01
934	1.61							2.25	1.65	1.21	1.01
1029	1.46					4.16	3.04	2.28	1.67	1.22	1.02
1188	1.26							2.40	1.76	1.29	1.07
<b>4p LSMV brake<sup>1</sup></b>											
<b>FCR<sup>1</sup></b>		FCR J01	FCR J01	FCR J01	FCR J01	FCR J01	FCR J01	FCR J01	FCR J02	FCR J02	FCR J02

1. See chapter C26.

Rated power kW	LSMV, LSMV brake - 4p 300 to 1 500 <sup>-1</sup> with constant torque			
	Motors	J 10 <sup>-3</sup> kg.m2	Brake motors	J 10 <sup>-3</sup> kg.m2
0.25	LSMV 71 L	1.25	LSMV 71 L FCR J01	1.25
0.37	LSMV 71 L	1.5	LSMV 71 L FCR J01	1.5
0.75	LSMV 80 L	3.4	LSMV 80 L FCR J01	3.4
1.5	LSMV 90 L	6.7	LSMV 90 L FCR J01	6.7
2.2	LSMV 100 L	6.9	LSMV 100 L FCR J01	6.9
3	LSMV 100 L	8.9	LSMV 100 L FCR J01	8.9
4	LSMV 112 MG	19.3	LSMV 112 MG FCR J01	19.3
5.5	LSMV 132 SM	60.4	LSMV 132 SM FCR J02	60.4
7.5	LSMV 132 M	62	LSMV 132 M FCR J02	62
9	LSMV 132 M	65.5	LSMV 132 M FCR J02	65.5

# Electromechanical products - variable speed Atmospheres containing explosive dust Compabloc 3000 / LSMV



AGMA I, II, III

**CATEGORY 3  
ZONE 22**

**Cb 3333**  
LSMV, LSMV brake FCR - IP 55 - Cl.F - 400 Y - 50 Hz  
Ex II 3D T 125°C - ZONE 22

## Cb 3333

		LSMV (kW)									
		0.25	0.37	0.75	1.5	2.2	3	4	5.5	7.5	9
		LSMV 4 p									
min <sup>-1</sup>	i	71 L	80 L	90 L	100 L	112 MG	132 SM	132 M			
7.48	200	2.72	1.81								
8.28	181	3.01	2.01								
9.26	162	3.36	2.24	1.10							
10.7	141	3.87	2.58	1.26							
12.1	125	4.37	2.92	1.43							
13.1	114	4.75	3.17	1.55							
14.8	101	5.38	3.59	1.76							
16.7	90.1	6.04	4.03	1.97							
18.6	80.9	6.73	4.49	2.20	1.09						
20.2	74.4	7.31	4.88	2.39	1.8						
22.7	66.1	8.23	5.50	2.69	1.33						
26.1	57.6	9.45	6.31	3.09	1.53	1.04					
30.8	48.7	10.79	7.21	3.52	1.74	1.19					
34.1	44	11.94	7.98	3.90	1.93	1.32					
38.1	39.4	13.35	8.91	4.36	2.16	1.47	1.07				
43.9	34.2	15.37	10.26	5.02	2.48	1.69	1.24				
49.6	30.2	17.37	11.60	5.67	2.81	1.92	1.40	1.05			
54	27.8	18.90	12.62	6.17	3.05	2.08	1.52	1.14			
61.1	24.6	21.39	14.28	6.98	3.46	2.36	1.72	1.29			
68.5	21.9	24.00	16.03	7.84	3.88	2.65	1.93	1.45	1.07		
76.4	19.6	26.75	17.86	8.73	4.32	2.95	2.15	1.62	1.19		
83	18.1	29.06	19.40	9.49	4.70	3.20	2.34	1.76	1.29		
93.4	16.1	> 30	21.85	10.68	5.29	3.61	2.63	1.98	1.46	1.06	
107	14	> 30	25.08	12.26	6.07	4.14	3.02	2.27	1.67	1.22	1.02
119	12.7					4.56	3.33	2.50	1.84	1.35	1.12
120	12.5	21.39	14.28	6.98	3.46	2.36					
135	11.1	24.00	16.03	7.84	3.88	2.65					
136	11					4.97	3.63	2.73	2.00	1.46	1.22
150	9.98							2.99	2.19	1.60	1.34
151	9.95	26.75	17.86	8.73	4.32	2.95	2.15	1.62			
164	9.16	29.06	19.40	9.49	4.70	3.20					
166	9.06					5.83	4.24	3.20	2.34	1.71	1.43
184	8.14	32.72	21.85	10.68	5.29	3.61	2.63	1.98			
191	7.85							3.51	2.57	1.88	1.57
212	7.09	37.57	25.09	12.26	6.07	4.14	3.02	2.27	1.67	1.22	1.02
234	6.41					4.58	3.34	2.51	1.85	1.35	1.13
268	5.59					5.25	3.83	2.88	2.12	1.55	1.30
297	5.06							3.18	2.34	1.71	1.43
327	4.59					6.40	4.67	3.51	2.58	1.89	1.58
377	3.98							4.05	2.98	2.18	1.82

4p LSMV brake<sup>1</sup>

FCR <sup>1</sup>	FCR J01	FCR J01	FCR J01	FCR J01	FCR J01	FCR J01	FCR J02	FCR J02
------------------	---------	---------	---------	---------	---------	---------	---------	---------

1. See chapter C26.

Rated power kW	LSMV, LSMV brake - 4p 300 to 1 500 <sup>-1</sup> with constant torque			
	Motors	J 10 <sup>-3</sup> kg.m <sup>2</sup>	Brake motors	J 10 <sup>-3</sup> kg.m <sup>2</sup>
0.25	LSMV 71 L	1.25	LSMV 71 L FCR J01	1.25
0.37	LSMV 71 L	1.5	LSMV 71 L FCR J01	1.5
0.75	LSMV 80 L	3.4	LSMV 80 L FCR J01	3.4
1.5	LSMV 90 L	6.7	LSMV 90 L FCR J01	6.7
2.2	LSMV 100 L	6.9	LSMV 100 L FCR J01	6.9
3	LSMV 100 L	8.9	LSMV 100 L FCR J01	8.9
4	LSMV 112 MG	19.3	LSMV 112 MG FCR J01	19.3
5.5	LSMV 132 SM	60.4	LSMV 132 SM FCR J02	60.4
7.5	LSMV 132 M	62	LSMV 132 M FCR J02	62
9	LSMV 132 M	65.5	LSMV 132 M FCR J02	65.5

# Electromechanical products - variable speed Atmospheres containing explosive dust Compabloc 3000 / LSMV



AGMA I, II, III

**CATEGORY 3  
ZONE 22**

**Cb 3431**  
LSMV, LSMV brake FCR - IP 55 - CI.F - 400 V Y - 50 Hz  
 II 3D T 125°C - ZONE 22

## Cb 3431

		LSMV (kW)											
		0.75	1.5	2.2	3	4	5.5	7.5	9	11	15	18.5	22
		3-phase LSMV 4 p											
min <sup>-1</sup>	i	80 L	90 L	100 L	112 MG	132 SM	132 M		160		180		
185	8.1	8.00	3.95	2.69	1.96	1.48							
220	6.83	10.01	4.95	3.37	2.46	1.85							
244	6.15	11.17	5.51	3.76	2.74	2.06	1.52	1.11					
269	5.57	12.33	6.09	4.15	3.03	2.28	1.68	1.22	1.02				
292	5.13	13.39	6.61	4.51	3.29	2.47	1.82	1.33	1.11				
340	4.41	15.57	7.69	5.24	3.82	2.87	2.12	1.54	1.29	1.06			
365	4.11		8.26	5.63	4.10	3.08	2.27	1.66	1.39	1.13			
417	3.6		9.43	6.43	4.69	3.52	2.59	1.89	1.58	1.29			
472	3.18		10.67	7.27	5.30	3.98	2.93	2.14	1.79	1.46	1.08		
530	2.83		11.87	8.09	5.90	4.43	3.26	2.38	1.99	1.63	1.20		
591	2.54		12.84	8.75	6.38	4.79	3.53	2.58	2.15	1.76	1.29	1.05	
691	2.17		14.28	9.73	7.09	5.33	3.92	2.86	2.39	1.96	1.44	1.17	
761	1.97						4.18	3.06	2.55	2.09	1.54	1.25	1.05
862	1.74						4.09	2.98	2.49	2.04	1.50	1.22	1.02
962	1.56						4.82	3.52	2.94	2.40	1.77	1.44	1.20
1087	1.38						4.76	3.47	2.90	2.37	1.75	1.42	1.19
1210	1.24						4.43	3.24	2.71	2.21	1.63	1.32	1.11
<b>4p LSMV brake<sup>1</sup></b>													
<b>FCR<sup>1</sup></b>		FCR J01	FCR J01	FCR J01	FCR J02	FCR J02	FCR J02	FCR J02	FCR J02	FCR J02	FCR J02	FCR J02	FCR J02

1. See chapter C26.

Rated power kW	LSMV, LSMV brake - 4p 300 to 1 500 <sup>-1</sup> with constant torque			
	Motors	J 10 <sup>-3</sup> kg.m2	Brake motors	J 10 <sup>-3</sup> kg.m2
0.25	LSMV 71 L	1.3	LSMV 71 L FCR J01	1.3
0.37	LSMV 71 L	1.5	LSMV 71 L FCR J01	1.5
0.75	LSMV 80 L	3.4	LSMV 80 L FCR J01	3.4
1.5	LSMV 90 L	6.7	LSMV 90 L FCR J01	6.7
2.2	LSMV 100 L	6.9	LSMV 100 L FCR J01	6.9
3	LSMV 100 L	8.9	LSMV 100 L FCR J01	8.9
4	LSMV 112 MG	19.3	LSMV 112 MG FCR J01	19.3
5.5	LSMV 132 SM	60.4	LSMV 132 SM FCR J02	60.4
7.5	LSMV 132 M	62	LSMV 132 M FCR J02	62
9	LSMV 132 M	65.5	LSMV 132 M FCR J02	65.5
11	LSMV 160 MR	72	LSMV 160 MR FCR J02	72
15	LSMV 160 LU	95	-	-
18.5	LSMV 180 MU	147	-	-
22	LSMV 180 LU	147	-	-

# Electromechanical products - variable speed Atmospheres containing explosive dust Compabloc 3000 / LSMV



AGMA I, II, III

**CATEGORY 3  
ZONE 22**

**Cb 3433**  
LSMV, LSMV brake FCR - IP 55 - CI.F - 400 V Y - 50 Hz  
⊕ II 3D T 125°C - ZONE 22

## Cb 3433

		LSMV (kW)											
		0.75	1.5	2.2	3	4	5.5	7.5	9	11	15	18.5	22
		3-phase LSMV 4 p											
min <sup>-1</sup>	i	80 L	90 L	100 L	112 MG	132 SM	132 M	160		180			
7.4	204	1.70											
8.7	172	2.02	1.00										
9.7	155	2.24	1.11										
11	140	2.47	1.22										
12	129	2.68	1.32										
14	111	3.11	1.54	1.05									
14	104		1.65	1.12									
17	90.7		1.88	1.28									
19	80.1		2.12	1.44	1.05								
21	71.4		2.37	1.62	1.18								
23	63.9		2.64	1.80	1.31								
27	54.7		3.08	2.10	1.53	1.15							
30	50.3	6.76	3.34	2.28	1.66	1.25							
30	49.6												
34	43.7					1.05							
35	42.5	7.98	3.94	2.69	1.96	1.47							
39	38.2	8.84	4.36	2.97	2.17	1.63	1.20						
43	34.6	9.74	4.81	3.28	2.39	1.80	1.32						
47	31.9	10.54	5.21	3.55	2.59	1.94	1.43	1.05					
55	27.4	12.21	6.03	4.11	3.00	2.25	1.66	1.21	1.01				
59	25.5		6.46	4.40	3.21	2.41	1.78	1.30	1.08				
67	22.4		7.35	5.01	3.65	2.74	2.02	1.47	1.23	1.01			
76	19.8		8.24	5.64	4.11	3.09	2.28	1.66	1.39	1.14			
85	17.6		9.26	6.31	4.60	3.46	2.54	1.86	1.55	1.27			
95	15.8		10.29	7.01	5.11	3.84	2.83	2.07	1.73	1.41	1.04		
111	13.5		11.95	8.14	5.94	4.46	3.28	2.40	2.00	1.64	1.21		
123	12.2						3.61	2.64	2.20	1.80	1.33	1.08	
139	10.8						3.98	2.90	2.43	1.98	1.46	1.18	
155	9.67						4.29	3.13	2.62	2.14	1.57	1.28	1.07
174	8.6						4.62	3.38	2.82	2.31	1.69	1.38	1.15
195	7.69						4.48	3.27	2.74	2.24	1.64	1.34	1.12
219	6.86		14.43	9.83	7.17	5.39	3.96	2.89	2.42	1.98	1.45	1.18	0.99
242	6.21						4.23	3.09	2.58	2.11	1.55	1.26	1.06
274	5.48						4.13	3.02	2.52	2.06	1.52	1.23	1.03
305	4.91						4.87	3.56	2.97	2.43	1.79	1.45	1.22
343	4.37						4.81	3.51	2.93	2.40	1.76	1.43	1.20
384	3.91						4.48	3.27	2.74	2.24	1.64	1.34	1.12

4p LSMV brake<sup>1</sup>

FCR <sup>1</sup>	FCR J01	FCR J01	FCR J01	FCR J01	FCR J02	FCR J02	FCR J02
------------------	---------	---------	---------	---------	---------	---------	---------

1. See chapter C26.

Rated power kW	LSMV, LSMV brake - 4p 300 to 1 500 <sup>-1</sup> with constant torque			
	Motors	J 10 <sup>-3</sup> kg.m <sup>2</sup>	Brake motors	J 10 <sup>-3</sup> kg.m <sup>2</sup>
0.25	LSMV 71 L	1.3	LSMV 71 L FCR J01	1.3
0.37	LSMV 71 L	1.5	LSMV 71 L FCR J01	1.5
0.75	LSMV 80 L	3.4	LSMV 80 L FCR J01	3.4
1.5	LSMV 90 L	6.7	LSMV 90 L FCR J01	6.7
2.2	LSMV 100 L	6.9	LSMV 100 L FCR J01	6.9
3	LSMV 100 L	8.9	LSMV 100 L FCR J01	8.9
4	LSMV 112 MG	19.3	LSMV 112 MG FCR J01	19.3
5.5	LSMV 132 SM	60.4	LSMV 132 SM FCR J02	60.4
7.5	LSMV 132 M	62	LSMV 132 M FCR J02	62
9	LSMV 132 M	65.5	LSMV 132 M FCR J02	65.5
11	LSMV 160 MR	72	LSMV 160 MR FCR J02	72
15	LSMV 160 LU	95	-	-
18.5	LSMV 180 MU	147	-	-
22	LSMV 180 LU	147	-	-

# Electromechanical products - variable speed Atmospheres containing explosive dust Compabloc 3000 / LSMV



AGMA I, II, III

**CATEGORY 3  
ZONE 22**

**Cb 3531**  
LSMV, LSMV brake FCR - IP 55 - CI.F - 400 V Y - 50 Hz  
Ex II 3D T 125°C - ZONE 22

## Cb 3531

		LSMV (kW)											
		1.5	2.2	3	4	5.5	7.5	9	11	15	18.5	22	30
		3-phase LSMV 4 p											
min <sup>-1</sup>	i	90 L	100 L	112 MG	132 SM	132 M			160		180		200
179	8	7.21	4.92	3.6	2.7	1.97	1.45	1.21					
208	6.87	8.19	5.59	4.09	3.07	2.24	1.65	1.38					
227	6.31	9.15	6.25	4.57	3.43	2.50	1.84	1.54					
260	5.5	10.50	7.17	5.25	3.93	2.87	2.11	1.76	1.44	1.06			
295	4.85	11.9	8.12	5.95	4.45	3.26	2.39	2	1.63	1.2			
329	4.35	13.27	9.06	6.63	4.97	3.63	2.67	2.23	1.82	1.33	1.08		
369	3.88	14.55	9.94	7.27	5.45	3.98	2.93	2.45	2	1.46	1.19	1	
403	3.55			8.08	6.06	4.43	3.26	2.72	2.22	1.63	1.32	1.11	
466	3.07			8.05	6.03	4.41	3.24	2.71	2.21	1.62	1.32	1.11	
516	2.77			9.29	6.96	5.1	3.75	3.13	2.56	1.87	1.52	1.28	
586	2.44					5.55	4.08	3.41	2.79	2.04	1.66	1.4	
636	2.25					5.75	4.22	3.53	2.89	2.17	1.72	1.44	
715	2					6.02	4.42	3.7	3.02	2.21	1.8	1.51	1.02
799	1.79					6.27	4.61	3.86	3.19	2.31	1.88	1.58	1.07
894	1.60								3.27	2.4	1.95	1.64	1.11
979	1.46								3.37	2.47	2.01	1.69	1.14
1117	1.28								3.51	2.57	2.09	1.75	1.19

4p LSMV brake<sup>1</sup>

FCR <sup>1</sup>	FCR J01	FCR J01	FCR J01	FCR J02	FCR J02	FCR J02
------------------	---------	---------	---------	---------	---------	---------

1. See chapter C26.

Rated power kW	LSMV, LSMV brake - 4p 300 to 1 500 <sup>-1</sup> with constant torque			
	Motors	J 10 <sup>-3</sup> kg.m <sup>2</sup>	Brake motors	J 10 <sup>-3</sup> kg.m <sup>2</sup>
1.5	LSMV 90 L	6.7	LSMV 90 LFCR J01	6.7
2.2	LSMV 100 L	6.9	LSMV 100 LFCR J01	6.9
3	LSMV 100 L	8.9	LSMV 100 LFCR J01	8.9
4	LSMV 112 MG MG	19.3	LSMV 112 MG FCR J01	19.3
5.5	LSMV 132 SM	60.4	LSMV 132 SM FCR J02	60.4
7.5	LSMV 132 M	62	LSMV 132 M FCR J02	62
9	LSMV 132 M	65.5	LSMV 132 M FCR J02	65.5
11	LSMV 160 MR	72	LSMV 160 MR FCR J02	72
15	LSMV 160 LU	95	-	-
18.5	LSMV 160 MU	147	-	-
22	LSMV 180 LU	147	-	-
30	LSMV 200 L	230	-	-

# Electromechanical products - variable speed Atmospheres containing explosive dust Compabloc 3000 / LSMV



AGMA I, II, III

**CATEGORY 3  
ZONE 22**

**Cb 3533**  
LSMV, LSMV brake FCR - IP 55 - CI.F - 400 V Y - 50 Hz  
⊕ II 3D T 125°C - ZONE 22

## Cb 3533

		LSMV (kW)											
		1.5	2.2	3	4	5.5	7.5	9	11	15	18.5	22	30
		3-phase LSMV 4 p											
min <sup>-1</sup>	i	90 L	100 L	112 MG	132 SM	132 M	160		180		200		
7.5	201	1.62	1.10										
8.7	173	1.88	1.28										
9.4	159	2.04	1.39	1.02									
10.9	138	2.34	1.60	1.17									
12.3	122	2.65	1.81	1.32									
13.6	110	2.94	2.01	1.47	1.10								
15.4	97.5	3.30	2.25	1.65	1.24								
16.8	89.3			1.80	1.35								
19.4	77.2			2.07	1.55	1.13							
21.5	69.8			2.22	1.66	1.21							
24.4	61.4					1.32							
26.5	56.6					1.38	1.01						
30.2	49.7	6.38	4.36	3.19	2.39	1.74	1.28	1.07					
33.4	44.9												
35.1	42.7	7.41	5.05	3.70	2.77	2.02	1.49	1.24					
37.2	40.3												
38.3	39.2	8.04	5.49	4.01	3.01	2.20	1.61	1.35					
43.9	34.2	9.19	6.27	4.59	3.44	2.51	1.85	1.54	1.26				
49.8	30.1	10.38	7.08	5.18	3.88	2.84	2.08	1.74	1.42	1.04			
55.4	27.1	11.52	7.86	5.76	4.31	3.15	2.31	1.93	1.58	1.16			
62.2	24.1	12.90	8.80	6.44	4.83	3.53	2.59	2.16	1.77	1.29	1.05		
67.9	22.1			7.01	5.25	3.84	2.82	2.35	1.92	1.41	1.14		
78.5	19.1			7.64	5.72	4.18	3.07	2.56	2.10	1.53	1.25	1.05	
87.2	17.2			8.87	6.64	4.85	3.56	2.98	2.43	1.78	1.45	1.22	
98.7	15.2					5.31	3.90	3.26	2.66	1.95	1.58	1.33	
107	14					5.59	4.11	3.43	2.80	2.05	1.67	1.40	1.03
121	12.4					6.18	4.54	3.79	3.10	2.27	1.84	1.55	1.14
135	11.1					6.60	4.85	4.05	3.31	2.42	1.97	1.66	1.22
151	9.94								3.65	2.68	2.17	1.83	1.34
165	9.07								3.88	2.84	2.31	1.94	1.43
189	7.92								4.24	3.11	2.52	2.12	1.56
209	7.18					5.60	4.11	3.43	2.80	2.05	1.67	1.40	1.03
235	6.38					6.18	4.54	3.79	3.10	2.27	1.84	1.55	1.14
263	5.7					6.60	4.85	4.05	3.31	2.42	1.97	1.65	1.22
294	5.1								4.34	3.18	2.58	2.17	1.60
322	4.66								4.56	3.34	2.72	2.28	1.68
369	4.07								4.89	3.58	2.91	2.44	1.80

4p LSMV brake<sup>1</sup>

FCR <sup>1</sup>	FCR J01	FCR J01	FCR J01	FCR J02	FCR J02	FCR J02
------------------	---------	---------	---------	---------	---------	---------

1. See chapter C26.

Rated power kW	LSMV, LSMV brake - 4p 300 to 1 500 <sup>-1</sup> with constant torque			
	Motors	J 10 <sup>-3</sup> kg.m <sup>2</sup>	Brake motors	J 10 <sup>-3</sup> kg.m <sup>2</sup>
1.5	LSMV 90 L	6.7	LSMV 90 LFCR J01	6.7
2.2	LSMV 100 L	6.9	LSMV 100 LFCR J01	6.9
3	LSMV 100 L	8.9	LSMV 100 LFCR J01	8.9
4	LSMV 112 MG	19.3	LSMV 112 MG FCR J01	19.3
5.5	LSMV 132 SM	60.4	LSMV 132 SM FCR J01	60.4
7.5	LSMV 132 M	62	LSMV 132 M FCR J01	62
9	LSMV 132 M	65.5	LSMV 132 M FCR J01	65.5
11	LSMV 160 MR	72	LSMV 160 MR FCR J01	72
15	LSMV 160 LU	95	-	-
18.5	LSMV 160 MU	147	-	-
22	LSMV 180 LU	147	-	-
30	LSMV 200 L	230	-	-

