

Electromechanical products - variable speed Compabloc 3000 / LSMV

General information



Compabloc 3000 geared motors with helical gears are used to adapt the speed of the electric motor to that of the driven machine. Their size is therefore determined by the motor power (P) expressed in kilowatts (kW) and the output rotation speed of the gear box (n_S) in revolutions per minute (min^{-1}). The main characteristic of the speed reducers is the rated output torque (M_{nS}) expressed in Newton-metres (N.m) :

$$M_{nS} = \frac{P \times 9\,550}{n_S} \times \text{efficiency}$$

A range of six sizes : 30, 31, 32, 33, 34, 35.
Rated output torque : from 10 N.m to 3 150 N.m.
Power rating : from 0.09 to 30 kW.
Reduction ratio : from 1.25 to 204.
High efficiency : 95 % to 98 %.
Reversible.
Silent operation.

Construction

Description of Compabloc (Cb) gearboxes

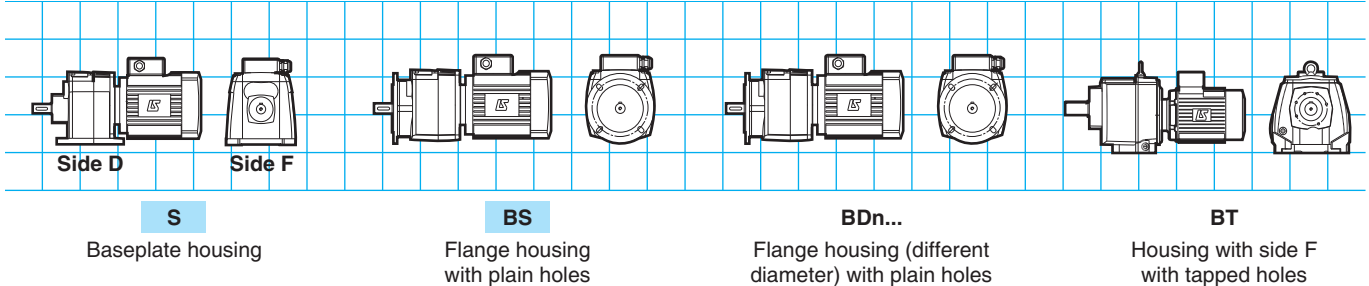
Component	Materials	Remarks
Housing	Aluminium (30) Cast iron (31to 35)	<ul style="list-style-type: none"> - use of cast aluminium - use of ENGJL-200 cast iron (flake graphite : tensile strength 200 MPa) single component perlite to ensure the complete sealing of the unit - monobloc reinforced with internal ribs to absorb vibrations and noise and to increase rigidity - with S baseplate, BT form or with BS, BD flanges. They are compact and meet industrial application-related requirements
Gears	Steel Ni Cr Mo	<ul style="list-style-type: none"> - cut by gear hob, they are heat treated by cementation, then undergo a final machining. The quality and the precision of the gear cutting allow maximum torque with minimum noise level
Seals	Nitrile	<ul style="list-style-type: none"> - sealing ring on the motor side - anti-dust lipseal collar according to DIN 3760 AS form - flat seal beneath the inspection door
Shaft	Steel	<ul style="list-style-type: none"> - grinding of the sealing surfaces - key according to ISO R773 - diameter tolerances in accordance with NFE 22-051 and ISO R775 - tapped holes at the shaft end in accordance with DIN 332 version D for mounting connecting equipment
Lubrication	Oil	<ul style="list-style-type: none"> - in accordance with ISO 6743 / 6 - supplied with the quantity of oil corresponding to the operating position, it is fitted with drain, level and vent plugs (Cb 30-- exclusive)
Mounting		<ul style="list-style-type: none"> MI : geared motor with intergral mounting MU : geared motor with IEC motor, with universal mounting
Standard motors		<ul style="list-style-type: none"> LSMV : - multi-voltage 220/380 V - 230/400 V - 240/415 V - sheet metal fan cover, fitted on request with a drip cover for operation in vertical position (shaft end facing down) - metal terminal box fitted with cable gland - IP 55 standard protection
Brake motors		<ul style="list-style-type: none"> FCR : failsafe brake asynchronous motor, ranging from 0.18 to 11 kW, IP 55 protection (LS 71 to 160) FCPL : failsafe brake asynchronous motor, ranging from 15 to 30 kW, IP 44 protection (LS 160 and 200)
Other motors		See pages D07 to D09.
Finish	Paint	Shade : RAL 6000 (green), system I (1 polyurethane vinyl layer of 25/30 μm)

Electromechanical products - variable speed Compabloc 3000 / LSMV

Forms and operating positions

Standard position : gearbox seen from side F, motor to the rear, side D facing the ground.

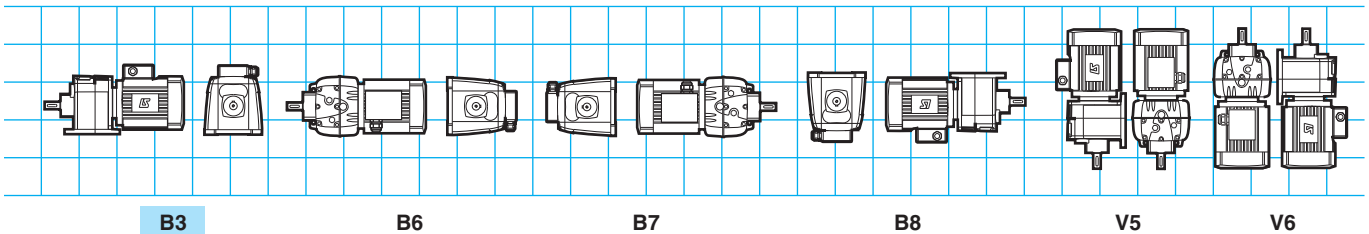
1 - Definition of mounting type : S, BS, BDn..., BT



2 - Definition of operating position

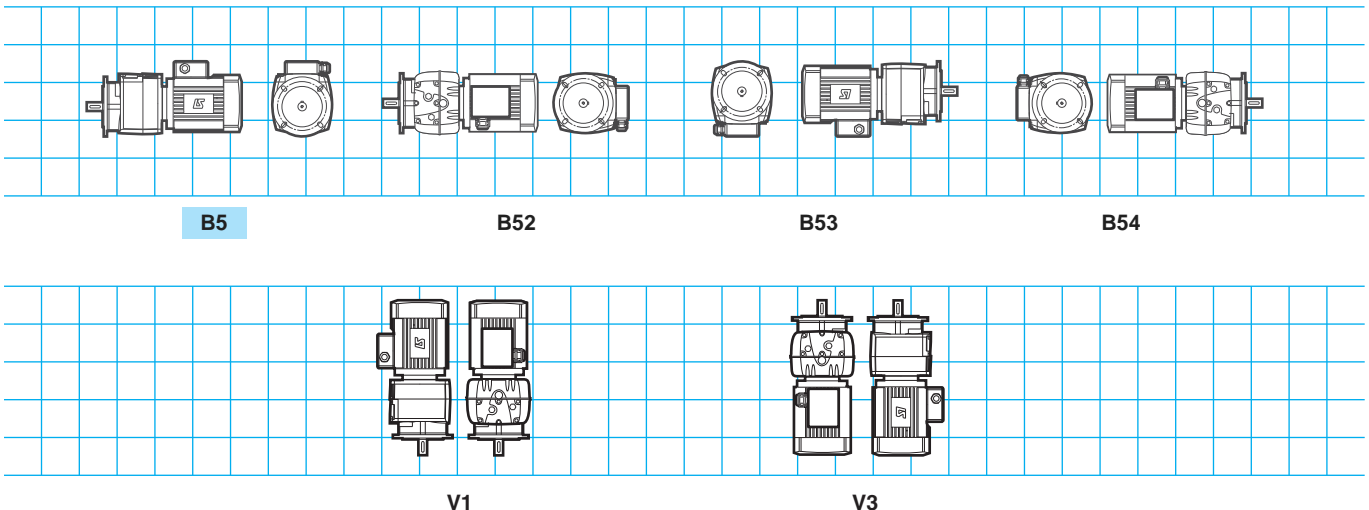
2.1- Mounting by S base-mount

Compabloc 1-train : Cb 3031 M* and 3131 to 3531, Compabloc multi-train : Cb 3032 and 3033 M* - Cb 3133 to 3533



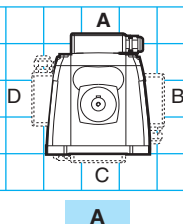
2.2 - Mounting with BS, BDn... flanges, or BT form

Compabloc 1-train : Cb 3031 M* and 3131 to 3531, Compabloc multi-train : Cb 3032 and 3033 M* - Cb 3133 to 3533

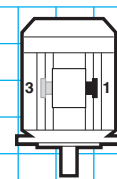
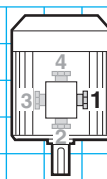


M* : For these multi-position geared motors (M), the positions should only be specified if the following are necessary : a vent plug on the gearbox and/or condensation water drain plug on the motor. Positions V3 and V6 MUST be specified.

3 - Terminal box positions



4 - Cable gland positions



Non-brake motor

Brake motor

Electromechanical products - variable speed Compabloc 3000 / LSMV

Adaptation possibilities

Leroy-Somer offers several drives for its gearboxes which meet a diverse range of needs. They are described below and offered in this catalogue.

For other drives, consult Leroy-Somer technical specialists who will be pleased to assist you.

☞ *Compabloc can be used in conjunction with the following drives :*

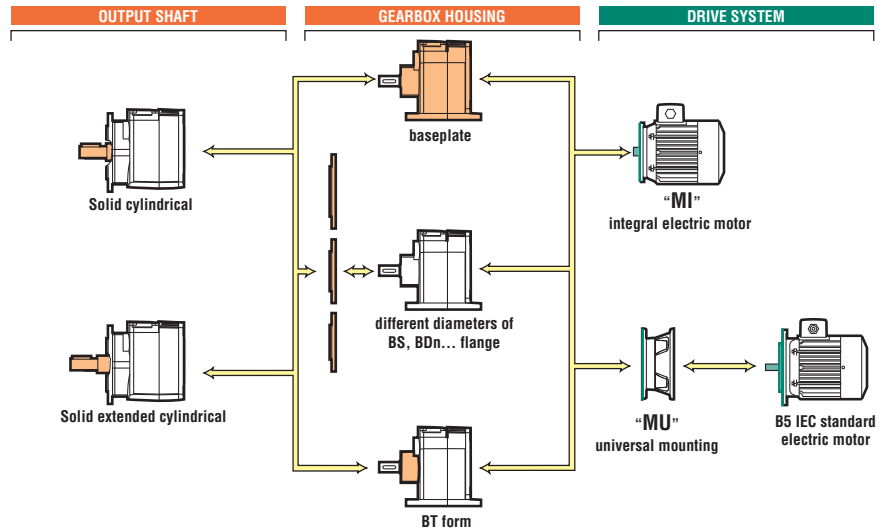
• **fixed-speed 3-phase asynchronous motors :**

- LS motor from 0.06 to 30 kW,
- FMC brake LS motor from 0.06 to 0.25 kW,
- FCR brake LS motor from 0.18 to 15 kW,
- FCPL brake LS motor from 18.5 to 30 kW,
- FLS motor from 0.55 to 30 kW,
- FCR brake FLS motor from 0.55 to 9 kW,
- FCPL brake FLS motor from 11 to 30 kW.

• **electronic variable speed motors :**

- centralised system with separate drive**
- LSMV motor from 0.25 to 30 kW,
- LSMV...FCR brake motor from 0.25 to 11 kW,
- LSMV...FCPL brake motor from 15 to 30 kW.

- decentralised system with built-in drive**
- VARMECA from 0.25 to 11 kW.



Designation / Coding

Cb	3333	B3	S	80.9	MI	4P	LSMV 80 L	0.75 kW	230/400 V 50 Hz	UG
Compabloc gearbox type	Manufacturer index and size	Operating position	Mounting type	Exact reduction	Input type	No. of poles	Series, frame size, manufacturer index	Rated power	Voltage and mains frequency	Use

☞ *Codification example :*

Compabloc 3333 B3 0.75 kW, 18 min⁻¹, class III

Designation

Cb 3333 B3 S 80.9 MI 4P, LSMV 80, 0.75 kW 230/400 V - 50 Hz - UG.

All the products in this catalogue have a code.

The coding table is incorporated in the price list with the list of designations.

Each electromechanical product is classified first in order of power and then in order of speed.

Electromechanical products - variable speed Compabloc 3000 / LSMV

Selection

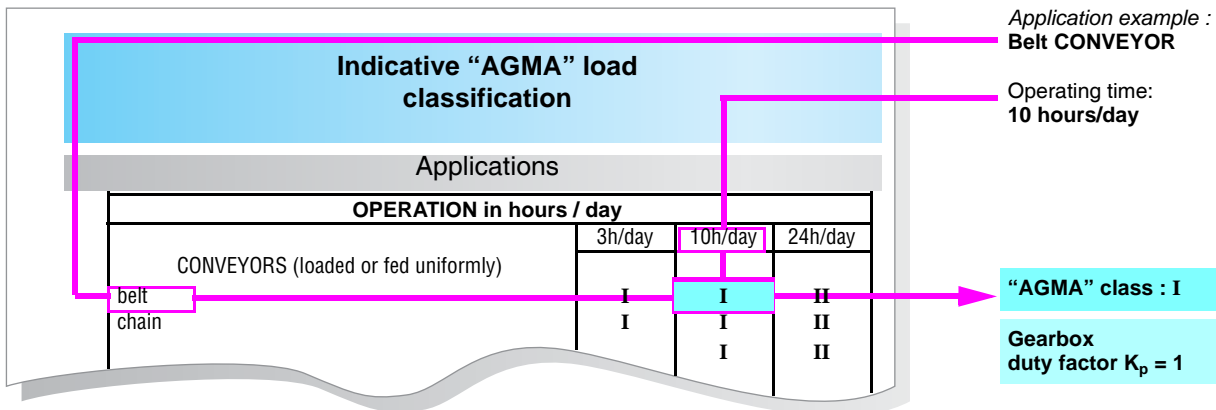
The selection of a gearbox or of a geared motor should take account of the application. Some of these applications are listed in the indicative "AGMA" load classification, page D0.10.

The opposite table summarises the relationship between the "AGMA" class and the gearbox duty factor K_p .

"AGMA" class	Gearbox duty factor K_p
I	1
II	1.4
III	2

1st case. – Your application is listed

Follow the indicative "AGMA" load classification table, page D0.10 of this catalogue. ▼



2nd case. – Your application is not listed

The "AGMA" selection class is defined by the daily operating time and by the application operating type, according to the table below. ▼

Type of application	Daily operating time	"AGMA" class
Shock-free, few starts	10 hours / day	I
Damped shocks	10 hours / day	II
Shock-free, few starts	24 hours / day	III
Violent shocks, many starts	10 hours / day	I
Damped shocks	24 hours / day	II

Electromechanical products - variable speed Compabloc 3000 / LSMV

Conditions

Cb 3000 : S, BT, BS, BDn
LSMV, LSMV brake FCR - IP 55 - Cl.F - 400 V Y - 50 Hz

Inputs		Maximum quantity by order					
		Cb 3031	Cb 31...3531	Cb 3032/3033	Cb 31/32/3333	Cb 3433	Cb 3533
MI LSMV	0.25-4 kW	5	5	5	5	5	5
	5.5-9 kW	-	5	-	5	5	5
	11 kW	-	-	-	-	-	-
	15-30 kW	-	-	-	-	-	-
MI LSMV FCR	0.25-4 kW	5	5	5	5	5	5
	5.5-9 kW	-	3	-	3	3	3
	11 kW	-	-	-	-	-	-
MU LSMV	0.25-4 kW	5	5	5	5	5	5
	5.5-9 kW	-	5	-	5	5	5
	11 kW	-	-	-	-	-	-
	15-30 kW	-	-	-	-	-	-
MU LSMV FCR	0.25-4 kW	5	5	5	5	5	5
	5.5-9 kW	-	3	-	3	3	3
	11 kW	-	1	-	-	1	1

	Mechanical options					
	S	BS	BD1	BD2	BD3	BT
Cb 3031					-	
Cb 31...3531				-	-	
Mounting	Page(s) of dimensions corresponding to mounting					
MI	D2.18	D2.20	D2.21	D2.21	-	D2.19
MU	D2.32-33	D2.32-33	D2.32-33	D2.32-33	-	D2.32-33

	Mechanical options					
	S	BS	BD1	BD2	BD3	BT
Cb 3032/3033/3133						
Cb 32/33/34/3533					-	
Mounting	Page(s) of dimensions corresponding to mounting					
MI	D2.22-23	D2.26-27	D2.28-29	D2.30	D2.31	D2.24-25
MU	D2.32-33	D2.32-33	D2.32-33	D2.32-33	D2.32-33	D2.32-33

Inputs 4p / MI-MU	Mains supply		Brake options and VV			
	230/400V	DLRA	Drip cover	TRR	Encoder	VF
LSMV	0.25-3 kW	-		-		
	4-9 kW	-		-		
	11 kW	-		-		
	15-30 kW	-		-		
LSMV FCR	0.25-4 kW			-		
	5.5-9kW			-		
	11 kW			-		



Electromechanical products - variable speed Compabloc 3000 / LSMV

AGMA I, II, III

Cb 3031
LSMV, LSMV brake FCR - IP 55 - CI.F - 400 V Y - 50 Hz

		Cb 3031						
		LSMV (kW)						
		0.25	0.37	0.75	1.5	2.2	3	4
		LSMV 4p						
min ⁻¹	i	71 L		80 L	90 L	100 L		112 MG
185	8.13	1.26	0.84					
208	7.22	1.41	0.94					
234	6.4	1.60	1.07					
258	5.82	1.76	1.17					
290	5.17	1.98	1.32					
327	4.58	2.23	1.49					
368	4.08	2.51	1.67	0.82				
414	3.63	2.82	1.88	0.92				
464	3.24	3.16	2.11	1.03				
545	2.75	3.71	2.48	1.21				
588	2.55	4.01	2.68	1.31				
685	2.19	4.66	3.11	1.52				
767	1.96	5.22	3.49	1.70				
821	1.83	5.59	3.74	1.83				
975	1.54	6.64	4.43	2.17				
1026	1.46	6.99	4.67	2.28				
1136	1.32	7.72	5.16	2.52				
4p LSMV brake¹								
FCR J01¹		FCR J01		FCR J01				

1. See chapter C13.

Rated power kW	LSMV, LSMV brake - 4p 150 to 1 500 ⁻¹ with constant torque			
	Motors	J 10 ⁻³ kg.m ²	Brake motors	J 10 ⁻³ kg.m ²
	0.25	LSMV 71 L	1.25	LSMV 71 L FCR J01
0.37	LSMV 71 L	1.5	LSMV 71 L FCR J01	1.5
0.75	LSMV 80 L	3.4	LSMV 80 L FCR J01	3.4

Electromechanical products - variable speed Compabloc 3000 / LSMV

AGMA I, II, III

Cb 3032-3033
LSMV, LSMV brake FCR - IP 55 - Cl.F - 400 V Y - 50 Hz

		Cb 3032-3033						
		LSMV (kW)						
		0.25	0.37	0.75	1.5	2.2	3	4
		LSMV 4p						
min ⁻¹	i	71 L		80 L	90 L	100 L		112 MG
21.7	69.1	0.85						
23.4	64.1	0.92						
27.3	55	1.07						
30.5	49.2	1.20	0.80					
32.7	45.9	1.28	0.86					
38.8	38.7	1.52	1.01					
40.9	36.7	1.60	1.07					
33.1	45.4	1.30	0.87					
37.2	40.3	1.46	0.98					
42	35.7	1.64	1.10					
46.2	32.5	1.80	1.20					
52	28.8	2.02	1.35					
58.6	25.6	2.28	1.52					
65.9	22.8	2.55	1.71	0.83				
74.1	20.2	2.87	1.91	0.93				
83	18.1	3.20	2.14	1.04				
97.7	15.4	3.75	2.51	1.22				
105	14.2	4.04	2.70	1.32				
123	12.2	4.68	3.13	1.53				
137	10.9	5.23	3.49	1.71				
147	10.2	5.59	3.73	1.82				
175	8.59	6.60	4.40	2.15				
184	8.16	6.93	4.63	2.26				
203	7.38	7.62	5.09	2.48				
4p LSMV brake¹								
FCR J01¹		FCR J01			FCR J01			

1. See chapter C13.

Rated power kW	LSMV, LSMV brake - 4p 150 to 1 500 ⁻¹ with constant torque			
	Motors	J 10 ⁻³ kg.m ²	Brake motors	J 10 ⁻³ kg.m ²
0.25	LSMV 71 L	1.25	LSMV 71 L FCR J01	1.25
0.37	LSMV 71 L	1.5	LSMV 71 L FCR J01	1.5
0.75	LSMV 80 L	3.4	LSMV 80 L FCR J01	3.4

Electromechanical products - variable speed Compabloc 3000 / LSMV

AGMA I, II, III

Cb 3131
LSMV, LSMV brake FCR - IP 55 - CI.F - 400 V Y - 50 Hz

		Cb 3131						
		LSMV (kW)						
		0.25	0.37	0.75	1.5	2.2	3	4
		LSMV 4p						
min ⁻¹	i	71 L		80 L	90 L	100 L		112 MG
190	7.91	4.04	3.55					
209	7.17	4.45	3.91					
240	6.25	5.11	3.41	1.67				
264	5.69	5.61	3.75	1.83				
305	4.92	6.49	4.34	2.12	1.05			
342	4.38	7.28	4.86	2.38	1.18	0.80		
382	3.93	8.13	5.43	2.65	1.31	0.90		
436	3.44	9.29	6.20	3.03	1.50	1.02		
462	3.25	9.82	6.56	3.21	1.59	1.08	0.79	
548	2.74	11.66	7.79	3.81	1.89	1.29	0.94	
582	2.58	12.38	8.27	4.04	2.00	1.36	1.00	
656	2.29	13.97	9.33	4.56	2.26	1.54	1.12	
750	2	15.44	10.30	5.03	2.49	1.70	1.24	
852	1.76	16.39	10.91	5.31	2.63	1.79	1.31	
964	1.56				2.74	1.86	1.36	
1088	1.38				2.84	1.93	1.41	
1231	1.22	18.92	12.60	6.14	3.04	2.07	1.51	
1293	1.16	19.52	13.00	6.33	3.13	2.14	1.56	
4p LSMV brake¹		FCR J01¹		FCR J01	FCR J01	FCR J01		

1. See chapter C13.

Rated power kW	LSMV, LSMV brake - 4p 150 to 1 500 ⁻¹ with constant torque			
	Motors	J 10 ⁻³ kg.m ²	Brake motors	J 10 ⁻³ kg.m ²
0.25	LSMV 71 L	1.25	LSMV 71 L FCR J01	1.25
0.37	LSMV 71 L	1.5	LSMV 71 L FCR J01	1.5
0.75	LSMV 80 L	3.4	LSMV 80 L FCR J01	3.4
1.5	LSMV 90 L	6.7	LSMV 90 L FCR J01	6.7
2.2	LSMV 100 L	6.9	LSMV 100 L FCR J01	6.9
3	LSMV 100 L	8.9	LSMV 100 L FCR J01	8.

Electromechanical products - variable speed Compabloc 3000 / LSMV

AGMA I, II, III

Cb 3133
LSMV, LSMV brake FCR - IP 55 - CI.F - 400 V Y - 50 Hz

Cb 3133

		LSMV (kW)						
		0.25	0.37	0.75	1.5	2.2	3	4
		LSMV 4p						
min ⁻¹	i	71 L	80 L	90 L	100 L	112 MG		
9.49	158	0.84						
10.4	144	0.92						
12.1	124	1.07						
13.5	111	1.19	0.79					
16	99.4	1.29	0.86					
17.3	87	1.42	0.95					
18.2	82.2	1.48	0.99					
21.7	69.2	1.66	1.11					
23	65.3	1.73	1.15					
25.9	57.8	1.87	1.25					
30.5	49.1	2.70	1.81					
33.7	44.5	5.21	3.47					
38.6	38.8	3.41	2.28	1.11				
42.4	35.4	3.74	2.50	1.22				
49.1	30.6	4.32	2.88	1.41				
55.1	27.2	4.83	3.22	1.58				
61.4	24.4	5.37	3.59	1.75	0.87			
70.2	21.4	6.12	4.09	2.00	0.99			
74.3	20.2	6.47	4.32	2.11	1.04			
88.2	17	7.65	5.10	2.49	1.24	0.84		
93.6	16	8.10	5.41	2.64	1.31	0.89		
106	14.2	9.11	6.08	2.97	1.47	1.00		
121	12.4	10.16	6.78	3.31	1.64	1.12	0.82	
137	10.9	11.17	7.44	3.63	1.80	1.22	0.89	
144	10.4	8.84	5.90	2.88				
155	9.67				1.96	1.33	0.97	
171	8.79	10.49	7.01	3.42				
175	8.57				2.12	1.44		
181	8.28	11.13	7.44					
198	7.57	14.26	9.50	4.63	2.29	1.56	1.14	
204	7.34	12.56	8.39	4.10	2.03	1.39	1.01	
234	6.42	14.36	9.59	4.69	2.32	1.58	1.15	
265	5.65	16.07	10.73	5.24	2.59	1.77	1.29	
300	4.99				2.74	1.86	1.36	
339	4.43				2.82	1.92	1.40	
383	3.91	19.55	13.02	6.34	3.14	2.14	1.56	
383	3.91	20.10	13.39	6.52	3.23	2.20	1.61	
4p LSMV brake¹		FCR J01		FCR J01	FCR J01	FCR J01		

1. See chapter C13.

Rated power kW	LSMV, LSMV brake - 4p 150 to 1 500 ⁻¹ with constant torque			
	Motors	J 10 ⁻³ kg.m ²	Brake motors	J 10 ⁻³ kg.m ²
0.25	LSMV 71 L	1.25	LSMV 71 L FCR J01	1.25
0.37	LSMV 71 L	1.5	LSMV 71 L FCR J01	1.5
0.75	LSMV 80 L	3.4	LSMV 80 L FCR J01	3.4
1.5	LSMV 90 L	6.7	LSMV 90 L FCR J01	6.7
2.2	LSMV 100 L	6.9	LSMV 100 L FCR J01	6.9
3	LSMV 100 L	8.9	LSMV 100 L FCR J01	8.9

Electromechanical products - variable speed Compabloc 3000 / LSMV

AGMA I, II, III

Cb 3231
LSMV, LSMV brake FCR - IP 55 - CI.F - 400 V Y - 50 Hz

		Cb 3231						
		LSMV (kW)						
		0.25	0.37	0.75	1.5	2.2	3	4
		LSMV 4p						
min ⁻¹	i	71 L		80 L	90 L	100 L		112 MG
186	8.08	6.32	4.22	2.06				
217	6.92	7.39	4.93	2.41	1.19	0.81		
238	6.31	8.10	5.41	2.64	1.31	0.89		
263	5.71	8.94	5.97	2.92	1.44	0.99		
308	4.88	10.48	7.00	3.42	1.69	1.16	0.84	
346	4.33	11.79	7.87	3.85	1.91	1.30	0.95	
385	3.89	13.12	8.76	4.28	2.12	1.45	1.05	0.79
438	3.43	14.90	9.95	4.86	2.41	1.64	1.20	0.90
486	3.09	16.55	11.05	5.40	2.67	1.82	1.33	1.00
551	2.72	18.78	12.54	6.13	3.04	2.07	1.51	1.14
589	2.55	20.07	13.40	6.55	3.24	2.21	1.61	1.21
679	2.21	23.13	15.45	7.55	3.74	2.55	1.86	1.40
774	1.94	26.36	17.61	8.61	4.26	2.91	2.12	1.59
857	1.75					3.17	2.31	1.74
969	1.55					3.43	2.51	1.88
1033	1.45					3.36	2.45	1.84
1221	1.23					3.63	2.65	1.99
4p LSMV brake¹								
FCR J01¹		FCR J01		FCR J01	FCR J01	FCR J01		FCR J01

1. See chapter C13.

Rated power kW	LSMV, LSMV brake - 4p 150 to 1 500 ⁻¹ with constant torque			
	Motors	J 10 ⁻³ kg.m ²	Brake motors	J 10 ⁻³ kg.m ²
0.25	LSMV 71 L	1.25	LSMV 71 L FCR J01	1.25
0.37	LSMV 71 L	1.5	LSMV 71 L FCR J01	1.5
0.75	LSMV 80 L	3.4	LSMV 80 L FCR J01	3.4
1.5	LSMV 90 L	6.7	LSMV 90 L FCR J01	6.7
2.2	LSMV 100 L	6.9	LSMV 100 L FCR J01	6.9
3	LSMV 100 L	8.9	LSMV 100 L FCR J01	8.9
4	LSMV 112 MG	19.3	LSMV 112 MG FCR J01	19.3

Electromechanical products - variable speed Compabloc 3000 / LSMV

AGMA I, II, III

Cb 3233
LSMV, LSMV brake FCR - IP 55 - CI.F - 400 V Y - 50 Hz

Cb 3233								
LSMV (kW)								
LSMV 4p								
		0.25	0.37	0.75	1.5	2.2	3	4
min ⁻¹	i	71 L		80 L	90 L	100 L		112 MG
7.36	204	1.46	0.97					
8.6	174	1.70	1.14					
9.43	159	1.87	1.25					
10.4	144	2.06	1.38					
12.2	123	2.42	1.62	0.79				
13.2	109	2.72	1.82	0.89				
15.3	98.2	3.03	2.02	0.99				
17.4	86.5	3.44	2.30	1.12				
19.3	77.9	3.82	2.55	1.25				
21.9	68.6	4.34	2.90	1.42				
23.4	64.2	4.63	3.09	1.51				
26.9	55.7	5.34	3.57	1.74	0.86			
29.9	50.2	5.93	3.96	1.93				
30.7	48.9				0.98			
34.9	43	6.90	4.61	2.25	1.12			
38.3	39.2	7.56	5.05	2.47	1.22	0.83		
42.2	35.5	8.33	5.56	2.72	1.35	0.92		
49.5	30.3	9.73	6.49	3.17	1.57	1.07		
55.7	26.9	10.91	7.29	3.56	1.76	1.20	0.88	
62	24.2	12.11	8.08	3.95	1.96	1.33	0.97	
70.4	21.3	13.71	9.15	4.47	2.21	1.51	1.10	0.83
78.2	19.2	15.73	10.10	4.93	2.44	1.67	1.22	0.91
88.7	16.9	16.63	11.09	5.41	2.68	1.83	1.33	1.00
94.8	15.8	17.46	11.64	5.67	2.81	1.91	1.40	1.05
109	13.7	19.32	12.87	6.27	3.10	2.11	1.54	1.16
122	12.3	13.25	8.85					
125	12	21.04	14.02	6.83	3.38	2.30	1.68	1.26
138	10.9					2.47	1.80	1.35
139	10.8	15.06	10.05	4.91	2.43	1.66		
154	9.72	16.72	11.17	5.46	2.70	1.84		
156	9.62					2.67	1.95	1.46
166	9.02					2.79	2.04	1.53
175	8.57	18.98	12.67	6.20	3.07	2.09		
187	8.02	20.28	13.54	6.62	3.28	2.24		
196	7.63					3.10	2.26	1.70
216	6.96	23.38	15.61	7.63	3.78	2.58	1.88	1.41
246	6.1	26.64	17.79	8.70	4.31	2.94	2.14	1.61
272	5.51					3.25	2.37	1.78
308	4.88					3.68	2.68	2.02
328	4.57					3.92	2.86	2.15
388	3.87					4.63	3.38	2.54
4p LSMV brake¹								
FCR J01¹		FCR J01		FCR J01	FCR J01	FCR J01		FCR J01

¹. See chapter C13.

Rated power kW	LSMV, LSMV brake - 4p 150 to 1 500 ⁻¹ with constant torque			
	Motors	J 10 ⁻³ kg.m ²	Brake motors	J 10 ⁻³ kg.m ²
0.25	LSMV 71 L	1.25	LSMV 71 L FCR J01	1.25
0.37	LSMV 71 L	1.5	LSMV 71 L FCR J01	1.5
0.75	LSMV 80 L	3.4	LSMV 80 L FCR J01	3.4
1.5	LSMV 90 L	6.7	LSMV 90 L FCR J01	6.7
2.2	LSMV 100 L	6.9	LSMV 100 L FCR J01	6.9
3	LSMV 100 L	8.9	LSMV 100 L FCR J01	8.9
4	LSMV 112 MG	19.3	LSMV 112 MG FCR J01	19.3

Electromechanical products - variable speed Compabloc 3000 / LSMV

AGMA I, II, III

Cb 3331
LSMV, LSMV brake FCR - IP 55 - CI.F - 400 V Y - 50 Hz

Cb 3331											
LSMV (kW)											
		0.25	0.37	0.75	1.5	2.2	3	4	5.5	7.5	9
LSMV 4p											
min ⁻¹	i	71 L	80 L	90 L	100 L		112 MG	132 SM	132 M		
191	7.83	12.23	8.16	3.99	1.98	1.35					
212	7.08	13.53	9.04	4.42	2.19	1.49					
237	6.33	15.12	10.10	4.94	2.44	1.67	1.22	0.91			
273	5.5	17.41	11.63	5.68	2.81	1.92	1.40	1.05			
308	4.87	19.68	13.14	6.42	3.18	2.17	1.58	1.19	0.88		
335	4.47	21.41	14.30	6.99	3.46	2.36	1.72	1.29	0.95		
380	3.95	24.23	16.18	7.91	3.92	2.67	1.95	1.47	1.08	0.79	
426	3.52	26.66	17.79	8.69	4.30	2.93	2.14	1.61	1.18	0.86	
475	3.16	28.01	18.66	9.08	4.50	3.06	2.24	1.68	1.23	0.90	
516	2.91	> 30	21.74	10.62	5.26	3.59	2.62	1.97	1.45	1.06	0.88
587	2.58	> 30	24.76	12.10	5.99	4.09	2.98	2.24	1.65	1.21	1.01
667	2.25	> 30	25.18	12.26	6.07	4.13	3.02	2.27	1.66	1.22	1.01
737	2.04					4.35	3.18	2.38	1.75	1.28	1.07
845	1.77					4.10	3.00	2.25	1.65	1.20	1.01
934	1.61							2.25	1.65	1.21	1.01
1029	1.46					4.16	3.04	2.28	1.67	1.22	1.02
1188	1.26							2.40	1.76	1.29	1.07
4p LSMV brake ¹											
FCR ¹		FCR J01	FCR J01	FCR J01	FCR J01	FCR J01	FCR J01	FCR J02	FCR J02	FCR J02	FCR J02

1. See chapter C13.

Rated power kW	LSMV, LSMV brake - 4p 150 to 1 500 ⁻¹ with constant torque			
	Motors	J 10 ⁻³ kg.m ²	Brake motors	J 10 ⁻³ kg.m ²
0.25	LSMV 71 L	1.25	LSMV 71 L FCR J01	1.25
0.37	LSMV 71 L	1.5	LSMV 71 L FCR J01	1.5
0.75	LSMV 80 L	3.4	LSMV 80 L FCR J01	3.4
1.5	LSMV 90 L	6.7	LSMV 90 L FCR J01	6.7
2.2	LSMV 100 L	6.9	LSMV 100 L FCR J01	6.9
3	LSMV 100 L	8.9	LSMV 100 L FCR J01	8.9
4	LSMV 112 MG	19.3	LSMV 112 MG FCR J01	19.3
5.5	LSMV 132 SM	60.4	LSMV 132 SM FCR J02	60.4
7.5	LSMV 132 M	62	LSMV 132 M FCR J02	62
9	LSMV 132 M	65.5	LSMV 132 M FCR J02	65.5

Electromechanical products - variable speed Compabloc 3000 / LSMV

AGMA I, II, III

Cb 3333
LSMV, LSMV brake FCR - IP 55 - CI.F - 400 V Y - 50 Hz

Cb 3333

		LSMV (kW)									
		0.25	0.37	0.75	1.5	2.2	3	4	5.5	7.5	9
		LSMV 4p									
min ⁻¹	i	71 L	80 L	90 L	100 L		112 MG	132 SM	132 M		
7.48	200	2.72	1.81	0.89							
8.28	181	3.01	2.01	0.98							
9.26	162	3.36	2.24	1.10							
10.7	141	3.87	2.58	1.26							
12.1	125	4.37	2.92	1.43							
13.1	114	4.75	3.17	1.55							
14.8	101	5.38	3.59	1.76	0.87						
16.7	90.1	6.04	4.03	1.97	0.98						
18.6	80.9	6.73	4.49	2.20	1.09						
20.2	74.4	7.31	4.88	2.39	1.8	0.81					
22.7	66.1	8.23	5.50	2.69	1.33	0.91					
26.1	57.6	9.45	6.31	3.09	1.53	1.04					
30.8	48.7	10.79	7.21	3.52	1.74	1.19					
34.1	44	11.94	7.98	3.90	1.93	1.32					
38.1	39.4	13.35	8.91	4.36	2.16	1.47	1.07	0.81			
43.9	34.2	15.37	10.26	5.02	2.48	1.69	1.24	0.93			
49.6	30.2	17.37	11.60	5.67	2.81	1.92	1.40	1.05			
54	27.8	18.90	12.62	6.17	3.05	2.08	1.52	1.14	0.84		
61.1	24.6	21.39	14.28	6.98	3.46	2.36	1.72	1.29	0.95		
68.5	21.9	24.00	16.03	7.84	3.88	2.65	1.93	1.45	1.07		
76.4	19.6	26.75	17.86	8.73	4.32	2.95	2.15	1.62	1.19	0.87	
83	18.1	29.06	19.40	9.49	4.70	3.20	2.34	1.76	1.29	0.95	
93.4	16.1	> 30	21.85	10.68	5.29	3.61	2.63	1.98	1.46	1.06	
107	14	> 30	25.08	12.26	6.07	4.14	3.02	2.27	1.67	1.22	
119	12.7					4.56	3.33	2.50	1.84	1.35	
120	12.5	21.39	14.28	6.98	3.46	2.36					
135	11.1	24.00	16.03	7.84	3.88	2.65					
136	11					4.97	3.63	2.73	2.00	1.46	
150	9.98							2.99	2.19	1.60	
151	9.95	26.75	17.86	8.73	4.32	2.95	2.15	1.62		1.34	
164	9.16	29.06	19.40	9.49	4.70	3.20					
166	9.06					5.83	4.24	3.20	2.34	1.71	
184	8.14	32.72	21.85	10.68	5.29	3.61	2.63	1.98		1.43	
191	7.85							3.51	2.57	1.88	
212	7.09	37.57	25.09	12.26	6.07	4.14	3.02	2.27	1.67	1.22	
234	6.41					4.58	3.34	2.51	1.85	1.35	
268	5.59					5.25	3.83	2.88	2.12	1.55	
297	5.06							3.18	2.34	1.71	
327	4.59							3.51	2.58	1.89	
377	3.98							4.05	2.98	2.18	
4p LSMV brake¹											
FCR¹		FCR J01	FCR J01	FCR J01	FCR J01	FCR J01	FCR J01	FCR J02	FCR J02	FCR J02	

1. See chapter C13.

Rated power kW	LSMV, LSMV brake - 4p 150 to 1 500 ⁻¹ with constant torque			
	Motors	J 10 ⁻³ kg.m ²	Brake motors	J 10 ⁻³ kg.m ²
0.25	LSMV 71 L	1.25	LSMV 71 L FCR J01	1.25
0.37	LSMV 71 L	1.5	LSMV 71 L FCR J01	1.5
0.75	LSMV 80 L	3.4	LSMV 80 L FCR J01	3.4
1.5	LSMV 90 L	6.7	LSMV 90 L FCR J01	6.7
2.2	LSMV 100 L	6.9	LSMV 100 L FCR J01	6.9
3	LSMV 100 L	8.9	LSMV 100 L FCR J01	8.9
4	LSMV 112 MG	19.3	LSMV 112 MG FCR J01	19.3
5.5	LSMV 132 SM	60.4	LSMV 132 SM FCR J02	60.4
7.5	LSMV 132 M	62	LSMV 132 M FCR J02	62
9	LSMV 132 M	65.5	LSMV 132 M FCR J02	65.5

Electromechanical products - variable speed Compabloc 3000 / LSMV

AGMA I, II, III

Cb 3431
LSMV, LSMV brake FCR IP 55 - LSMV brake FCPL IP 44 - CI.F - 400 V Y - 50 Hz

Cb 3431

		LSMV (kW)											
		0.75	1.5	2.2	3	4	5.5	7.5	9	11	15	18.5	22
		LSMV 4 p											
min ⁻¹	i	80 L	90 L	100 L		112 MG	132 SM	132 M		160		180	
185	8.1	8.00	3.95	2.69	1.96	1.48							
220	6.83	10.01	4.95	3.37	2.46	1.85							
244	6.15	11.17	5.51	3.76	2.74	2.06	1.52	1.11	0.93				
269	5.57	12.33	6.09	4.15	3.03	2.28	1.68	1.22	1.02				
292	5.13	13.39	6.61	4.51	3.29	2.47	1.82	1.33	1.11				
340	4.41	15.57	7.69	5.24	3.82	2.87	2.12	1.54	1.29	1.06			
365	4.11		8.26	5.63	4.10	3.08	2.27	1.66	1.39	1.13	0.83		
417	3.6		9.43	6.43	4.69	3.52	2.59	1.89	1.58	1.29	0.95		
472	3.18		10.67	7.27	5.30	3.98	2.93	2.14	1.79	1.46	1.08	0.87	
530	2.83		11.87	8.09	5.90	4.43	3.26	2.38	1.99	1.63	1.20	0.97	0.82
591	2.54		12.84	8.75	6.38	4.79	3.53	2.58	2.15	1.76	1.29	1.05	0.88
691	2.17		14.28	9.73	7.09	5.33	3.92	2.86	2.39	1.96	1.44	1.17	0.98
761	1.97						4.18	3.06	2.55	2.09	1.54	1.25	1.05
862	1.74						4.09	2.98	2.49	2.04	1.50	1.22	1.02
962	1.56						4.82	3.52	2.94	2.40	1.77	1.44	1.20
1087	1.38						4.76	3.47	2.90	2.37	1.75	1.42	1.19
1210	1.24						4.43	3.24	2.71	2.21	1.63	1.32	1.11

4p LSMV brake FCR ¹ - LSMV brake FCPL ²													
FCR ¹		FCR J01	FCR J01	FCR J01	FCR J01	FCR J02	FCR J02	FCR J02	FCR J02	FCR J02	FCR J02	FCR J02	FCR J02
FCPL ²												FCPL	FCPL

1. See chapter C13.
2. See chapter C14.

Rated power kW	LSMV, LSMV brakes - 4p 150 to 1 500 ⁻¹ with constant torque			
	Motors	J 10 ⁻³ kg.m ²	Brake motors	J 10 ⁻³ kg.m ²
0.25	LSMV 71 L	1.3	LSMV 71 L FCR J01	1.3
0.37	LSMV 71 L	1.5	LSMV 71 L FCR J01	1.5
0.75	LSMV 80 L	3.4	LSMV 80 L FCR J01	3.4
1.5	LSMV 90 L	6.7	LSMV 90 L FCR J01	6.7
2.2	LSMV 100 L	6.9	LSMV 100 L FCR J01	6.9
3	LSMV 100 L	8.9	LSMV 100 L FCR J01	8.9
4	LSMV 112 MG	19.3	LSMV 112 MG FCR J01	19.3
5.5	LSMV 132 SM	60.4	LSMV 132 SM FCR J02	60.4
7.5	LSMV 132 M	62	LSMV 132 M FCR J02	62
9	LSMV 132 M	65.5	LSMV 132 M FCR J02	65.5
11	LSMV 160 MR	72	LSMV 160 MR FCR J02	72
15	LSMV 160 LU	95	LSMV 160 LU FCPL 54-215	117
18.5	LSMV 180 MU	147	LSMV 180 MU FCPL 54-318	171
22	LSMV 180 LU	147	LSMV 180 LU FCPL 54-222	171

Electromechanical products - variable speed Compabloc 3000 / LSMV

AGMA I, II, III

Cb 3433

LSMV, LSMV brake FCR - IP 55 - LSMV brake FCPL IP 44 - CI.F - 400 V Y - 50 Hz

Cb 3433

		LSMV (kW)											
		0.75	1.5	2.2	3	4	5.5	7.5	9	11	15	18.5	22
		LSMV 4 p											
min ⁻¹	i	80 L	90 L	100 L		112 L	132 SM	132 M		160	180		
7.4	204	1.70	0.84										
8.7	172	2.02	1.00										
9.7	155	2.24	1.11										
11	140	2.47	1.22	0.83									
12	129	2.68	1.32	0.90									
14	111	3.11	1.54	1.05									
14	104		1.65	1.12	0.82								
17	90.7		1.88	1.28	0.93								
19	80.1		2.12	1.44	1.05	0.79							
21	71.4		2.37	1.62	1.18	0.89							
23	63.9		2.64	1.80	1.31	0.99							
27	54.7		3.08	2.10	1.53	1.15	0.85						
30	50.3	6.76	3.34	2.28	1.66	1.25							
30	49.6						0.93						
34	43.7						1.05						
35	42.5	7.98	3.94	2.69	1.96	1.47							
39	38.2	8.84	4.36	2.97	2.17	1.63	1.20	0.88					
43	34.6	9.74	4.81	3.28	2.39	1.80	1.32	0.97	0.81				
47	31.9	10.54	5.21	3.55	2.59	1.94	1.43	1.05	0.87				
55	27.4	12.21	6.03	4.11	3.00	2.25	1.66	1.21	1.01	0.83			
59	25.5		6.46	4.40	3.21	2.41	1.78	1.30	1.08	0.89			
67	22.4		7.35	5.01	3.65	2.74	2.02	1.47	1.23	1.01			
76	19.8		8.24	5.64	4.11	3.09	2.28	1.66	1.39	1.14	0.84		
85	17.6		9.26	6.31	4.60	3.46	2.54	1.86	1.55	1.27	0.93		
95	15.8		10.29	7.01	5.11	3.84	2.83	2.07	1.73	1.41	1.04	0.84	
111	13.5		11.95	8.14	5.94	4.46	3.28	2.40	2.00	1.64	1.21	0.98	
123	12.2						3.61	2.64	2.20	1.80	1.33	1.08	
139	10.8						3.98	2.90	2.43	1.98	1.46	1.18	
155	9.67						4.29	3.13	2.62	2.14	1.57	1.28	
174	8.6						4.62	3.38	2.82	2.31	1.69	1.38	
195	7.69						4.48	3.27	2.74	2.24	1.64	1.34	
219	6.86		14.43	9.83	7.17	5.39	3.96	2.89	2.42	1.98	1.45	1.18	
242	6.21						4.23	3.09	2.58	2.11	1.55	1.26	
274	5.48						4.13	3.02	2.52	2.06	1.52	1.23	
305	4.91						4.87	3.56	2.97	2.43	1.79	1.45	
343	4.37						4.81	3.51	2.93	2.40	1.76	1.43	
384	3.91						4.48	3.27	2.74	2.24	1.64	1.34	

4p LSMV brake FCR¹ - LSMV brake FCPL²

FCR ¹	FCR J01	FCR J01	FCR J01	FCR J01	FCR J02	FCR J02	FCR J02	FCPL	FCPL
FCPL ²								FCPL	FCPL

1. See chapter C13.

2. See chapter C14.

Rated power kW	LSMV, LSMV brakes - 4p 150 to 1 500 ⁻¹ with constant torque			
	Motors	J 10 ⁻³ kg.m ²	Brake motors	J 10 ⁻³ kg.m ²
0.25	LSMV 71 L	1.3	LSMV 71 L FCR J01	1.3
0.37	LSMV 71 L	1.5	LSMV 71 L FCR J01	1.5
0.75	LSMV 80 L	3.4	LSMV 80 L FCR J01	3.4
1.5	LSMV 90 L	6.7	LSMV 90 L FCR J01	6.7
2.2	LSMV 100 L	6.9	LSMV 100 L FCR J01	6.9
3	LSMV 100 L	8.9	LSMV 100 L FCR J01	8.9
4	LSMV 112 MG	19.3	LSMV 112 MG FCR J01	19.3
5.5	LSMV 132 SM	60.4	LSMV 132 SM FCR J02	60.4
7.5	LSMV 132 M	62	LSMV 132 M FCR J02	62
9	LSMV 132 M	65.5	LSMV 132 M FCR J02	65.5
11	LSMV 160 MR	72	LSMVR 160 MR FCR J02	72
15	LSMV 160 LU	95	LSMV 160 LU FCPL 54-215	117
18.5	LSMV 180 MU	147	LSMV 180 MU FCPL 54-318	171
22	LSMV 180 LU	147	LSMV 180 LU FCPL 54-222	171

Electromechanical products - variable speed Compabloc 3000 / LSMV

AGMA I, II, III

Cb 3531
LSMV - LSMV brake FCR - IP 55 - LSMV brake FCPL IP 44 - CI.F - 400 V Y - 50 Hz

Cb 3531

		LSMV (kW)												
		1.5	2.2	3	4	5.5	7.5	9	11	15	18.5	22	30	
		LSMV 4 p												
min ⁻¹	i	90 L	100 L	112 MG	132 S	132 M	160		180		200			
179	8	7.20	4.90	3.56	2.72	1.98	1.44	1.21						
208	6.87	8.14	5.55	4.03	3.08	2.23	1.63	1.36						
227	6.31	9.20	6.26	4.55	3.48	2.53	1.84	1.54						
260	5.5	10.56	7.19	5.22	3.99	2.90	2.12	1.77	1.45	1.06	0.86			
295	4.85	11.90	8.11	5.89	4.50	3.27	2.39	1.99	1.63	1.20	0.97	0.82		
329	4.35	13.34	9.09	6.60	5.04	3.66	2.67	2.24	1.83	1.34	1.09	0.92		
369	3.88				5.45	3.96	2.89	2.42	1.98	1.45	1.18	0.99		
403	3.55								2.17	1.59	1.29	1.09		
466	3.07								2.19	1.61	1.30	1.10		
516	2.77								2.44	1.79	1.45	1.22	0.90	
586	2.44									1.90	1.54	1.29	0.95	
636	2.25									1.96	1.59	1.34	0.98	
715	2									2.06	1.67	1.40	1.03	
799	1.79									2.14	1.74	1.46	1.08	
894	1.60									2.22	1.81	1.52	1.12	
979	1.46									2.29	1.86	1.56	1.15	
1117	1.28									2.38	1.93	1.63	1.20	
4 p LSMV brake FCR¹ - LSMV brake FCPL²		FCR J01		FCR J01	FCR J01	FCR J02	FCR J02	FCR J02	FCR J02			160 FCPL	180 FCPL	200 FCPL
FCPL²														

1. See chapter C13.
2. See chapter C14.

Rated power kW	LSMV, LSMV brake - 4p 150 to 1 500 ⁻¹ with constant torque			
	Motors	J 10 ⁻³ kg.m2	Brake motors	J 10 ⁻³ kg.m2
1.5	LSMV 90 L	6.7	LSMV 90 L FCR J01	6.7
2.2	LSMV 100 L	6.9	LSMV 100 L FCR J01	6.9
3	LSMV 100 L	8.9	LSMV 100 L FCR J01	8.9
4	LSMV 112 MG	19.3	LSMV 112 M GFCR J01	19.3
5.5	LSMV 132 SM	60.4	LSMV 132 S MFCR J01	60.4
7.5	LSMV 132 M	62	LSMV 132 M FCR J02	62
9	LSMV 132 M	65.5	LSMV 132 M FCR J02	65.5
11	LSMV 160 MR	72	LSMV 160 MR FCR J02	72
15	LSMV 160 LU	95	LSMV 160 LU FCPL 54-215	117
18.5	LSMV 180 MU	147	LSMV 180 MU FCPL 54-318	171
22	LSMV 180 LU	147	LSMV 180 LU FCPL 54-222	171
30	LSMV 200 L	230	LSMV 200 L FCPL 60-330	306

Electromechanical products - variable speed Compabloc 3000 / LSMV

AGMA I, II, III

Cb 3533

LSMV, LSMV brake FCR IP 55 - LSMV brake FCPL IP 44 - CI.F - 400 V Y - 50 Hz

Cb 3533

		LSMV (kW)											
		1.5	2.2	3	4	5.5	7.5	9	11	15	18.5	22	30
		LSMV 4 p											
min ⁻¹	i	90 L	100 L	112 MG	132S	132 M		160	180		200		
7.5	201	1.62	1.10	0.81									
8.7	173	1.88	1.28	0.94									
9.4	159	2.04	1.39	1.02									
10.9	138	2.34	1.60	1.17	0.88								
12.3	122	2.65	1.81	1.32	0.99								
13.6	110	2.94	2.01	1.47	1.10	0.81							
15.4	97.5	3.30	2.25	1.65	1.24	0.90							
16.8	89.3			1.80	1.35	0.98							
19.4	77.2			2.07	1.55	1.13	0.83						
21.5	69.8			2.22	1.66	1.21	0.89						
24.4	61.4					1.32	0.97	0.81					
26.5	56.6					1.38	1.01	0.84					
30.2	49.7	6.38	4.36	3.19	2.39	1.74	1.28	1.07					
33.4	44.9								0.79				
35.1	42.7	7.41	5.05	3.70	2.77	2.02	1.49	1.24					
37.2	40.3								0.84				
38.3	39.2	8.04	5.49	4.01	3.01	2.20	1.61	1.35					
43.9	34.2	9.19	6.27	4.59	3.44	2.51	1.85	1.54	1.26	0.92			
49.8	30.1	10.38	7.08	5.18	3.88	2.84	2.08	1.74	1.42	1.04	0.85		
55.4	27.1	11.52	7.86	5.76	4.31	3.15	2.31	1.93	1.58	1.16	0.94	0.79	
62.2	24.1	12.90	8.80	6.44	4.83	3.53	2.59	2.16	1.77	1.29	1.05	0.88	
67.9	22.1			7.01	5.25	3.84	2.82	2.35	1.92	1.41	1.14	0.96	
78.5	19.1			7.64	5.72	4.18	3.07	2.56	2.10	1.53	1.25	1.05	
87.2	17.2			8.87	6.64	4.85	3.56	2.98	2.43	1.78	1.45	1.22	0.89
98.7	15.2					5.31	3.90	3.26	2.66	1.95	1.58	1.33	0.98
107	14					5.59	4.11	3.43	2.80	2.05	1.67	1.40	1.03
121	12.4					6.18	4.54	3.79	3.10	2.27	1.84	1.55	1.14
135	11.1					6.60	4.85	4.05	3.31	2.42	1.97	1.66	1.22
151	9.94								3.65	2.68	2.17	1.83	1.34
165	9.07								3.88	2.84	2.31	1.94	1.43
189	7.92								4.24	3.11	2.52	2.12	1.56
209	7.18					5.60	4.11	3.43	2.80	2.05	1.67	1.40	1.03
235	6.38					6.18	4.54	3.79	3.10	2.27	1.84	1.55	1.14
263	5.7					6.60	4.85	4.05	3.31	2.42	1.97	1.65	1.22
294	5.1								4.34	3.18	2.58	2.17	1.60
322	4.66								4.56	3.34	2.72	2.28	1.68
369	4.07								4.89	3.58	2.91	2.44	1.80

4 p LSMV brake FCR¹ - LSMV brake FCPL²

FCR ¹	FCR J01	FCR J01	FCR J01	FCR J02	FCR J02	FCR J02			
FCPL ²							160 FCPL	180 FCPL	200 FCPL

- See chapter C13.
- See chapter C14.

Rated power kW	LSMV, LSMV brakes - 4p 150 to 1 500 ⁻¹ with constant torque			
	Motors	J 10 ⁻³ kg.m2	Brake motors	J 10 ⁻³ kg.m2
1.5	LSMV 90 L	6.7	LSMV 90 L FCR J01	6.7
2.2	LSMV 100 L	6.9	LSMV 100 L FCR J01	6.9
3	LSMV 100 L	8.9	LSMV 100 L FCR J01	8.9
4	LSMV 112 MG	19.3	LSMV 112 MG FCR J01	19.3
5.5	LSMV 132 SM	60.4	LSMV 132 SM FCR J02	60.4
7.5	LSMV 132 M	62	LSMV 132 M FCR J02	62
9	LSMV 132 M	65.5	LSMV 132 M FCR J02	65.5
11	LSMV 160 MR	72	LSMV 160 MR FCR J02	72
15	LSMV 160 LU	95	LSMV 160 LU FCPL54-215	117
18.5	LSMV 160 MU	147	LSMV 180 MU FCPL54-318	171
22	LSMV 180 LU	147	LSMV 180 LU FCPL54-222	171
30	LSMV 200 L	230	LSMV 200 L FCPL60-330	306

