

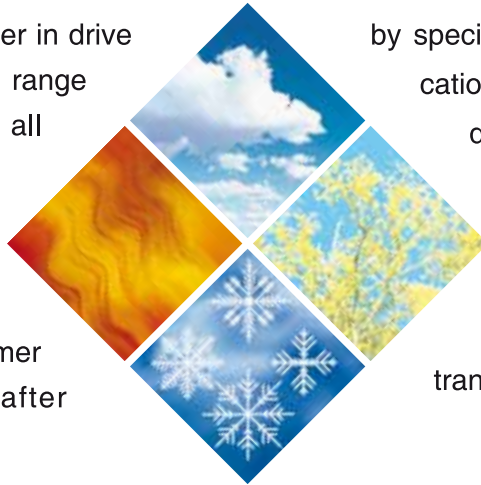
**MOTORS FOR HEATING,
VENTILATION, AIR CONDITIONING**

STRENGTH OF OUR KNOW-HOW

Motors for centrifugal and axial fans

Leroy-Somer, the world leader in drive systems, offers a very wide range of electric motors for all centrifugal and axial fan applications.

From standard motors to special motors with fixed or variable speeds, Leroy-Somer designs solutions sought after



by specialist manufacturers for applications such as air heaters, ovens, dryers, extraction towers, air treatment chambers, evaporators and condensers for refrigeration (static and mobile), filters, pneumatic transports, etc.

LEROY-SOMER ventilation laboratory AMCA* chamber



Leroy-Somer has worked in partnership with customers over a long period of time to optimise the combined motor and fan. In ventilation applications, the motor is actually cooled directly by the fan it is driving.

The **AMCA** chamber is used to characterise the air movement (flow/pressure curve) and acoustic performance for fans with flows of up to 30,000m³/hr, ie. equivalent to axial fans with a diameter of 900 mm.

It can also be used to simulate the actual motor load in order to optimise it.

* Air Movement and Control Association

A LEROY-SOMER SOLUTION....

HEATING

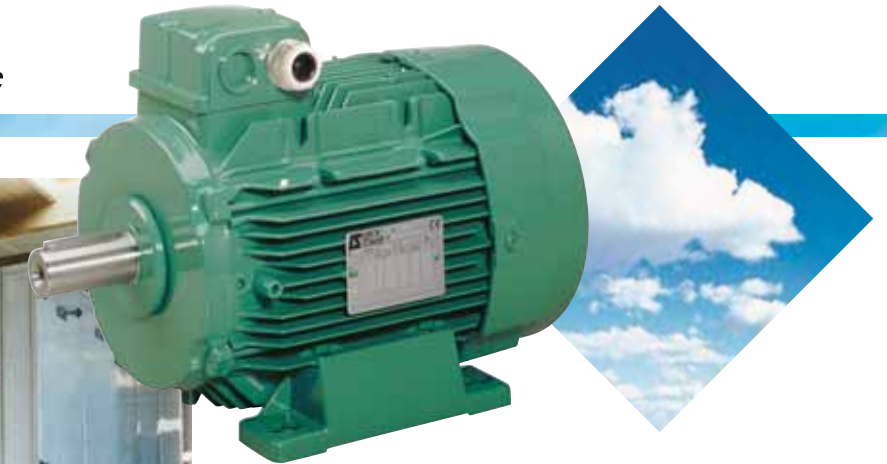
Air heaters, etc



- **HE compact motors**
for axial fans in the air flow
0.06 to 1.5 kW
- **LS, FLS, LSES, FLSES motors**
Complying with standard IEC 34.1,
improved efficiency Eff2 and
high efficiency Eff1
- **CF/CM pad mounting motors**

AIR TREATMENT

Chambers, Extraction towers, etc



- **LS, FLS, LSES, FLSES motors**
Complying with standard IEC 34.1,
high-efficiency Eff2, Eff1
Aluminium or cast iron frame
Ventilated or non-ventilated
Single-speed or multi-speed
Optional thermal protections
0.09 to 750 kW

DRYING and STOVING

Ovens, Drying ovens, Dryers, etc



- **LS high-temperature motors**
for dryers/drying ovens
Aluminium or cast iron frame
Mounted inside the oven
Humidity up to 100%
Ambient temperature from 85 to 150°C
0.55 to 55 kW
- **LS high-temperature motors**
for ovens
Fitted with heat shields
Mounted outside the oven
0.12 to 15 kW

SAFETY VENTILATION

Fires, Explosive atmospheres, etc



EN 12101-3
ATEX 94/9/CE

- **LSHT / FLSHT motors**
for smoke extraction
200°C - 120 min 250°C - 120 min 300°C - 60 min
300°C - 120 min 400°C - 120 min
0.4 to 500 kW
- **LSPX, FLSPX motors**
for dusty explosive atmospheres
- **FLSD, LSE, FLSE, LSN, FLSN motors**
for gaseous explosive atmospheres

FOR EVERY APPLICATION

REFRIGERATION

Evaporators, Condensers, etc



- **CF/CM pad mounting motors**
Single-speed or multi-speed
2 to 16 poles
Ventilated by the air flow
0.06 to 9 kW
- **VCM axial fans**
Diameters 600 to 900 mm
- **VHE compact fans**
Diameters 350 to 800 mm

VARIABLE SPEED

Leroy-Somer offers a complete range of frequency inverters for regulating flow, pressure or temperature, reducing operating costs, optimising processes, etc.

These drives protect the system, control acceleration and deceleration phases, detect clogging and prevent mechanical breakdown, etc.

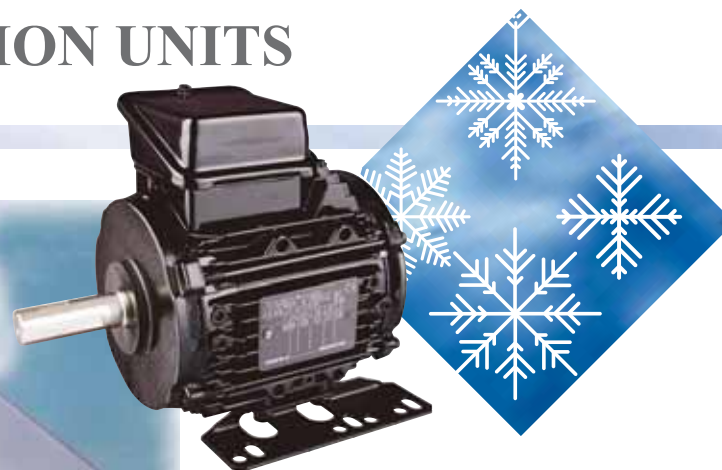
DIGIDRIVE SK



VARMECA

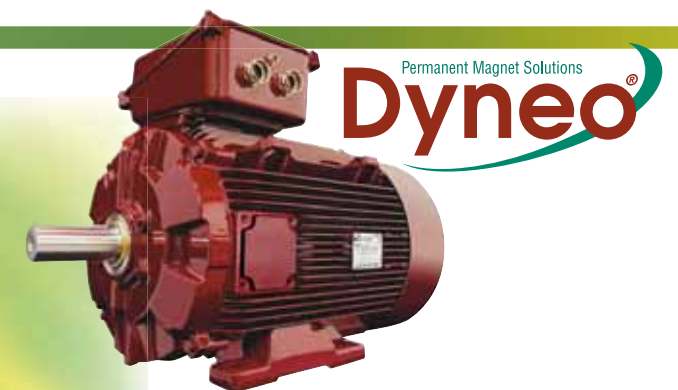
MOBILE REFRIGERATION UNITS

Buses, Trucks, Containers, Trains, etc



- **Customised LS motors for severe environments**
1000 hours resistance to saline mist
- **MBT D.C. motors**
for truck and bus refrigeration
12 or 24 V battery power supply
0.06 to 0.75 kW
- **CF/CM pad mounting motors**
for condensers and evaporators

ENERGY SAVING PROTECTING THE ENVIRONMENT



Permanent Magnet Solutions
Dyneo

Motors consume nearly 70% of industry's requirement for electrical energy. Solutions which are able to reduce and adapt the electricity consumption of installations to users' actual needs are essential in order to make real energy savings.

With this in mind, Leroy-Somer offers:

- Eff1 high-efficiency motors, in aluminium or cast iron, which operate directly on the mains.
- Motors with permanent magnets, in conjunction with Leroy-Somer variable speed drives.

STRENGTH OF OUR SERVICE

CHOICE OF SELECTION TOOLS



Technical catalogues

Detailed information on selection, construction, and operation

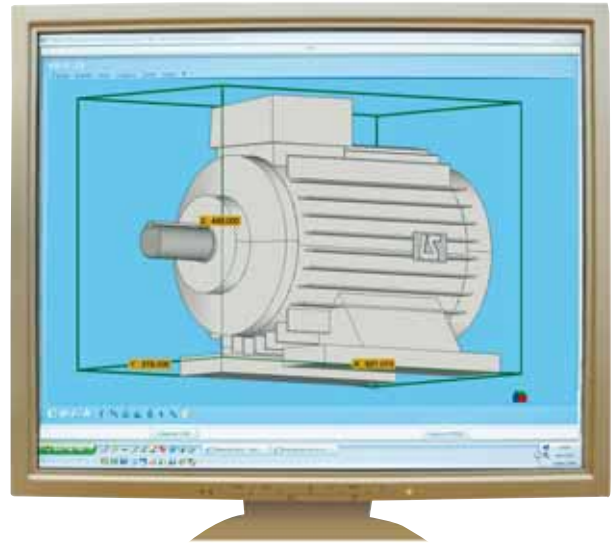
Catalogue for Industry on line

Selecting motors on short delivery:
Guaranteed Availability



Internet site

www.leroy-somer.com



Configurator V5 on line

- product selection in thirteen languages
- printing of a technical specification with dimensional drawings in all languages
- generation of CAD file in 2 D and 3 D with viewer and dimensioning tool

CHOICE OF DELIVERY TIMES

- For Guaranteed Availability products: 24 hours
- For products from Fast Assembly Centre: 48 hours
- For Rush products: 12 working days
- For other products: possibility of a customer-specific delivery charter



COMPREHENSIVE REPAIR SERVICE



Our Integrated Spares Service is a comprehensive system which can supply you with design office approved spare parts kits, or train your staff in repair techniques.

LEROY-SOMER helps you prepare for the unexpected, offering emergency repair kits so that maintenance can be carried out 24 hours a day, 7 days a week.



WORLDWIDE PRESENCE

470 Sales and Service points





MOTEURS LEROY-SOMER 16015 ANGOULÊME CEDEX - FRANCE

338 567 258 RCS ANGOULÊME
S.A. au capital de 62 779 000 €

www.leroy-somer.com