



ACTIVE LOAD

Test bench for rotating machines

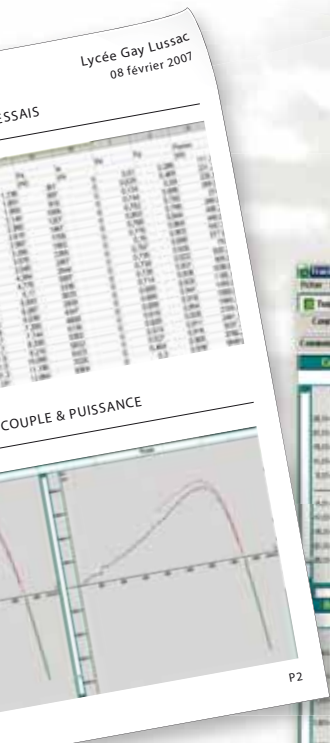
Acquisition data

benches

The load motor and its pilot unit use the most recent and efficient industrial technologies. An integral part of the Leroy Somer active load, the **ApILE** (Industrial Applications in Research Laboratories) software, improves its educational use and increases its different possibilities

ApILE Software: advantages

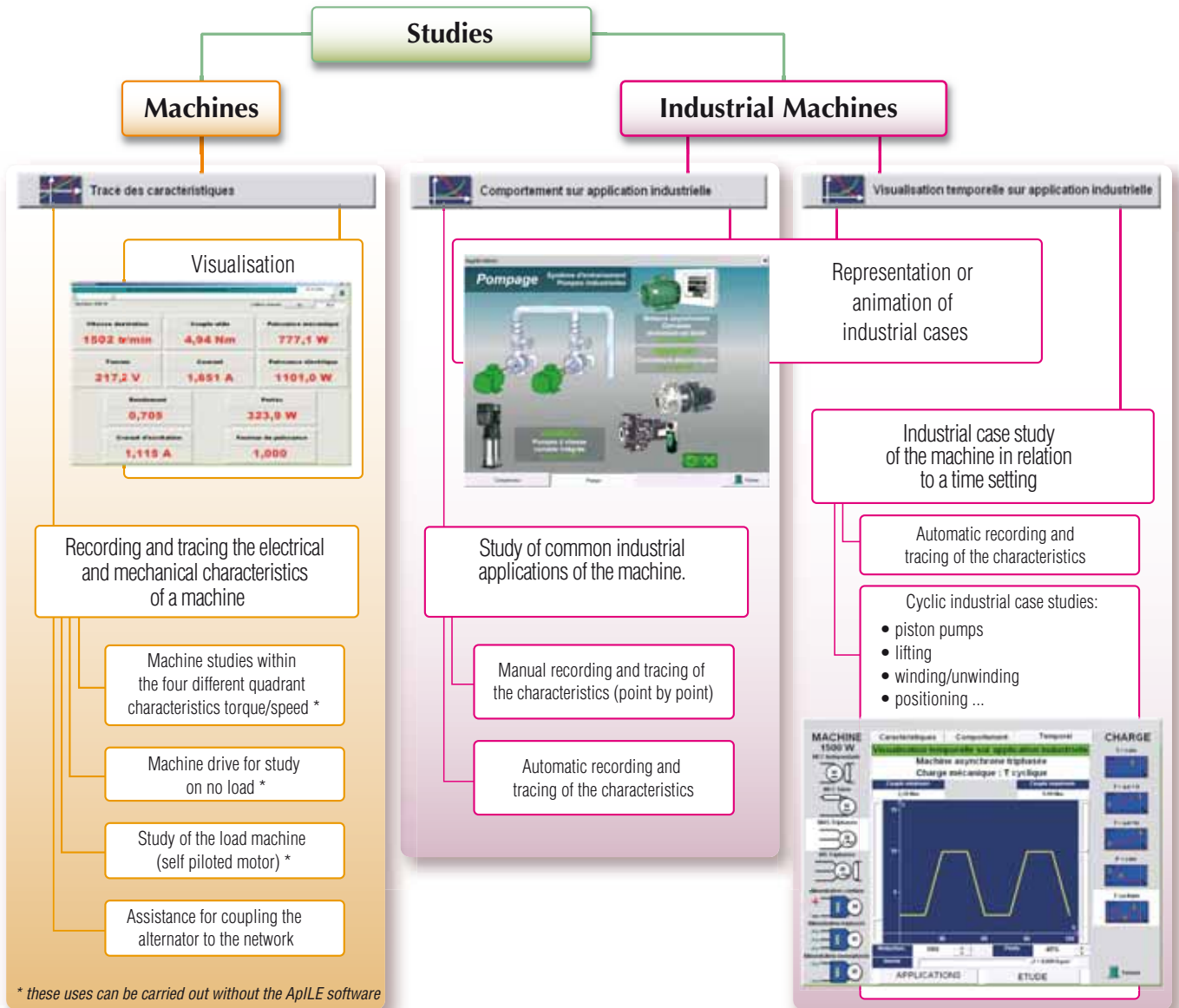
- ▶ **Intuitive:** ApILE enables immediate use
- ▶ **Practical:** one click and, for each study, ApILE displays the image or shows an animated version of the industrial reality, using its case library
- ▶ **Interactive:** ApILE enables one to include electrical and mechanical datas in presentation software, word processing or spreadsheets
- ▶ **Quick and easy:**
 - no need for numerical input,
 - authorises a maximum of 3 actions per page



Active load solutions

► **Active load** enables the study of the most commonly used, current supplied, machines, within the industry:

- DC: separate, independent, series excitation or poly-excitation,
- AC: asynchronous with mono or two speed short circuited rotor, with wound rotor,
- AC: synchronous.



Active load 300 W or 1500 W

3 phase 400V - 50Hz supply



Load piloting unit

L: 430 mm
D: 250 mm
H: 320 mm
Weight: 11,1 kg



Load

L: 410 mm
D: 220 mm
H: 320 mm
Weight: 15 kg



Braking Resistance

L: 465 mm
D: 185 mm
H: 170 mm
Weight: 4,8 kg



Cables

length and weight

- PC: 2 m
- Load: 5 m (weight 1,5 kg)
- Encoder: 5 m (weight 1 kg)



LEROY-SOMER MOTORS 16015 ANGOULÊME CEDEX - FRANCE

338 567 258 RCS ANGOULÊME
Plc. with a capital of 62 779 000 €

www.leroy-somer.com