

**D550**

**Dual plate**  
Installation and maintenance

**LEROY-SOMER**<sup>™</sup>

***Nidec***  
All for dreams

# Dual plate D550

**This manual concerns the alternator AVR which you have just purchased.  
We wish to draw your attention to the contents of this maintenance manual.**

## SAFETY MEASURES

Before using your machine for the first time, it is important to read the whole of this installation and maintenance manual.

All necessary operations and interventions on this machine must be performed by a qualified technician.

Our technical support service will be pleased to provide any additional information you may require.

The various operations described in this manual are accompanied by recommendations or symbols to alert the user to potential risks of accidents. It is vital that you understand and take notice of the following warning symbols.

### WARNING

**Warning symbol for an operation capable of damaging or destroying the machine or surrounding equipment.**



**Warning symbol for general danger to personnel.**



**Warning symbol for electrical danger to personnel.**



**All servicing or repair operations performed on the AVR should be undertaken by personnel trained in the commissioning, servicing and maintenance of electrical and mechanical components.**

## WARNING

**This AVR can be incorporated in a EC-marked machine.**

**This manual is to be given to the end user.**

© 2024 Moteurs Leroy-Somer SAS

Share Capital: 32,239,235 €, RCS Angoulême 338 567 258.

We reserve the right to modify the characteristics of this product at any time in order to incorporate the latest technological developments. The information contained in this document may therefore be changed without notice.

This document may not be reproduced in any form without prior authorization.

All brands and models have been registered and patents applied for.

# Dual plate D550

## Table of contents

1. General instructions .....	4
1.1. Identity card .....	4
1.2. General presentation .....	4
1.2.1. Of the product .....	4
1.2.2. Of the equipment .....	5
1.3. Technical characteristics .....	6
1.4. Safety devices and general safety instructions .....	8
1.4.1. General information .....	8
1.4.2. Use .....	9
1.4.3. Transportation, storage .....	9
1.4.4. Installation .....	9
1.4.5. Electrical connection .....	9
1.4.6. Operation .....	10
1.4.7. Service and maintenance .....	10
1.4.8. Protection of the equipment .....	10
2. Installation instructions .....	11
2.1. Layout of the cabinet housing the dual plate .....	11
2.2. Connection block .....	11
2.3. Consumption .....	13
2.4. Wiring precautions .....	13
3. Setup instructions .....	14
3.1. Stator voltage and current measurement .....	14
3.2. Configuration files .....	14
3.3. Checks prior to commissioning .....	16
3.4. Aligning measurements .....	17
4. Instructions for use .....	18
4.1. Safety instructions .....	18
4.2. Description of control and signalling devices .....	18
4.3. Description of running modes .....	18
4.3.1. Manual switching .....	18
4.3.2. Correction of setpoints with digital inputs .....	19
4.3.3. Follower .....	19
4.3.4. Switching on a fault .....	19
4.3.5. Procedure for replacing a faulty AVR .....	23
4.4. Anomalies and problems .....	24
5. Maintenance .....	25
5.1. Technical data .....	25
5.1.1. Mechanical drawings .....	25
5.1.2. Wiring diagrams .....	25
5.2. Preventive maintenance instructions .....	25

# Dual plate D550

## 1. General instructions

### 1.1. Identity card

This dual plate for generator regulation has been made by:

MOTEURS LEROY-SOMER  
1, rue de la Burelle  
45800 SAINT JEAN DE BRAYE  
France  
Tel: +33 2 38 60 42 00  
E-mail: [savorleans.ials@mail.nidec.com](mailto:savorleans.ials@mail.nidec.com)

Internal LEROY-SOMER reference: P5 199 0035

### 1.2. General presentation

#### 1.2.1. Of the product

This manual describes the instructions for installation, use, setup, and maintenance of the dual plate D550.

This plate is for the regulation of generators with field current of up to 7 A in continuous operation, and 15 A maximum in short-circuit conditions for 10 seconds maximum.<sup>1</sup>

This plate has been designed to be installed in a control and power switching cabinet. These cabinets must provide the minimum conditions for protection and safety of electrical installations up to 300 VAC phase/neutral, in force in the place where the plate is installed.

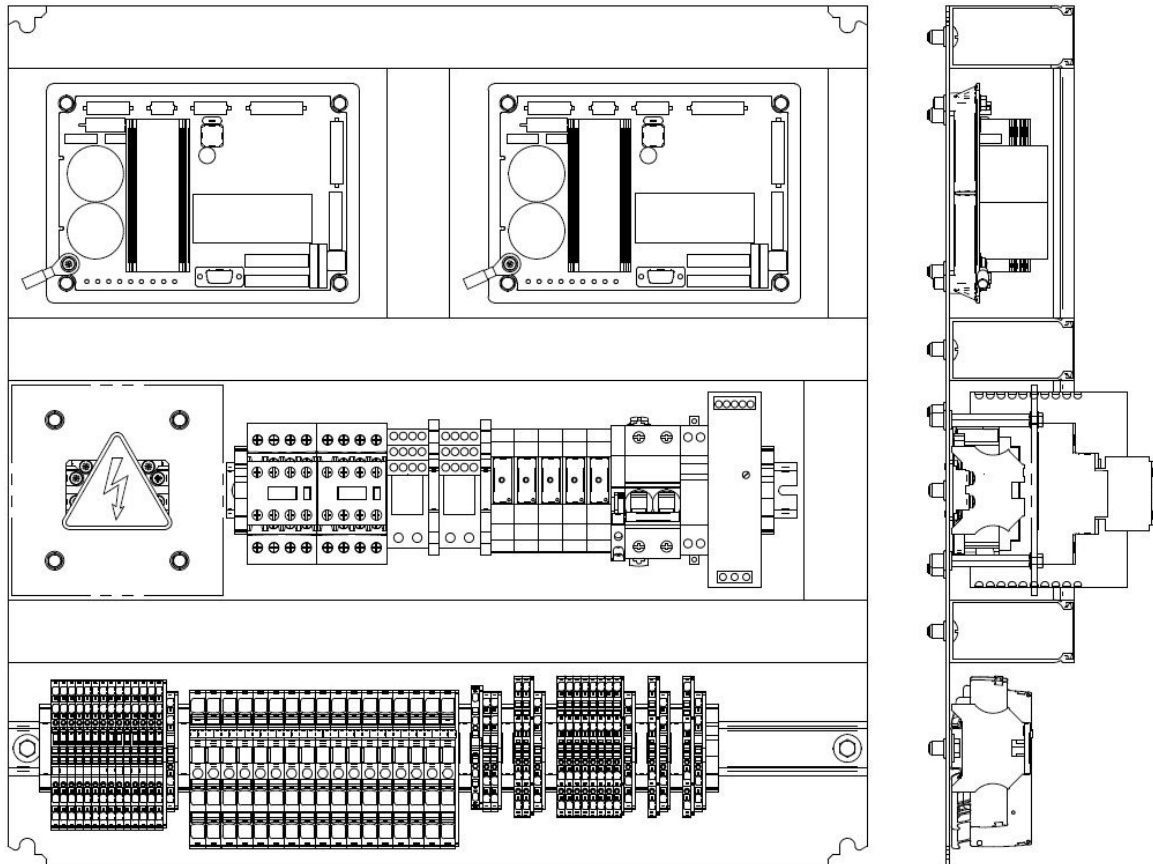
It consists of a frame equipped with two AVRs, a 24 VDC power supply, and a set of relays and terminals. To make it easy to remove and replace a faulty AVR, even when the generator is still running, a set of disconnect terminals has been installed on the measuring and power supply circuits of each AVR.

**Note: For more information on AVR operation, please refer to the installation and maintenance manual for D550 AVRs (LEROY-SOMER reference: 5744en).**

---

<sup>1</sup> These values are given for a temperature of 25°C. See the detailed technical specifications for the complete values.

## Dual plate D550



### 1.2.2. Of the equipment

The dual plate D550 allows switching from one AVR to a second one, while the generator is running.

To make this switching happen, different components come into play:

- The D550 AVRs exchange information via a CAN communication bus.
- One 24 VDC power supply: for AVRs and for the control circuit (relay technology).
- Two contactors allow switching of the generator field circuit.
- Two freewheel diode modules, connected on the field circuit, to ensure it never opens.

All the controls:

- 5 configurable inputs, hard-wired to deliver the same information to each AVR for the regulation modes, ramp start, etc.
- A set of 2 dedicated inputs on each AVR for manual switching between the two.

Each AVR has 4 operating modes:

- **Active:** The AVR is running and controlling the generator field current.
- **Online:** The AVR is ready and waiting, its regulation mode is the same as the active AVR. However, it is not controlling the field current.
- **Maintenance:** The AVR has stopped, for example while waiting to be replaced.
- **Fault:** The AVR has stopped due to a fault.

## Dual plate D550

### 1.3. Technical characteristics

Plate equipped with two AVRs for generators, with the following main regulation functions: voltage, power factor, voltage match circuit, kVAR, power factor at the delivery point, manual mode.

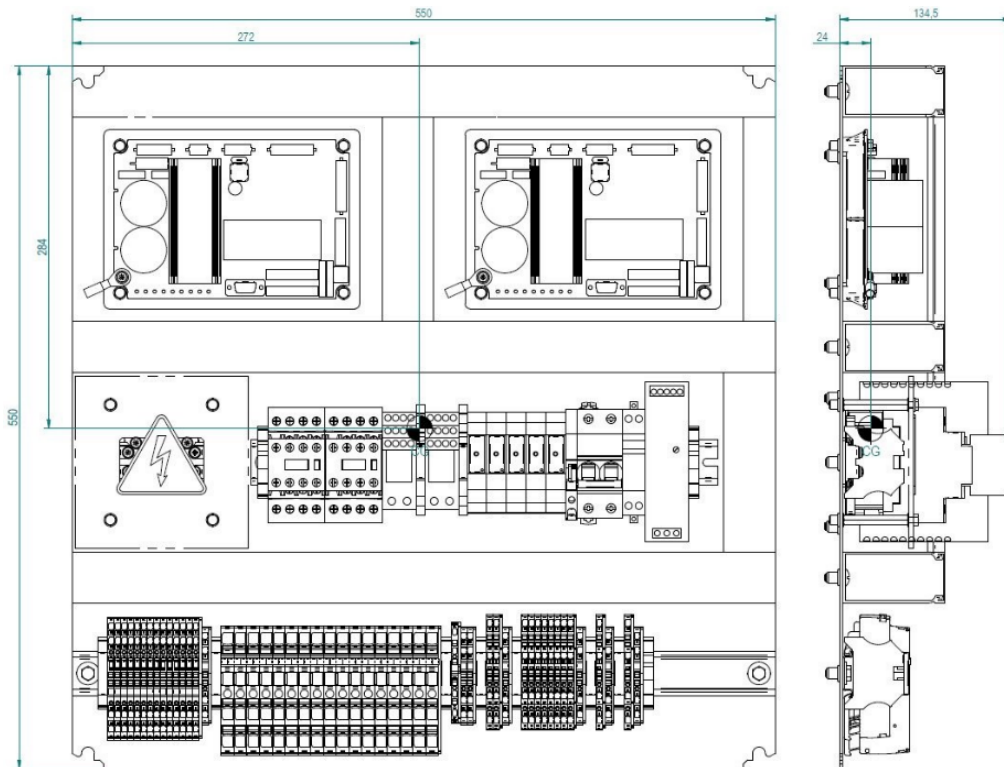
For each AVR:

- **Generator voltage sensing:**
  - 2 phases or 3 phases 530 VAC rms max
  - Consumption < 2 VA
- **Mains voltage sensing:**
  - 2 phases 530 VAC rms max
  - Consumption < 2 VA
- **Stator current measurement with a CT:**
  - 1 or 3 phases
  - Range 0-1 A or 0-5 A (300% max. 30 s)
  - Consumption < 2 VA
- **Power supply:**
  - 4 terminals for PMG, AREP, SHUNT
  - 2 separate circuits
  - Range 50-277 VAC (115% max. 2 minutes)
  - Consumption < 3000 VA
- **Field current:**
  - Rated 7A at 70°C max. 8A at 55°C
  - Short-circuit max. 15 A, for 10 seconds
  - Field winding resistance > 4 Ohm
- **DC auxiliary supply:**
  - Range 8-35 VDC (rated power: 12V or 24V)
  - Consumption < 1A
- **Frequency measurement:**
  - Range 30-400 Hz

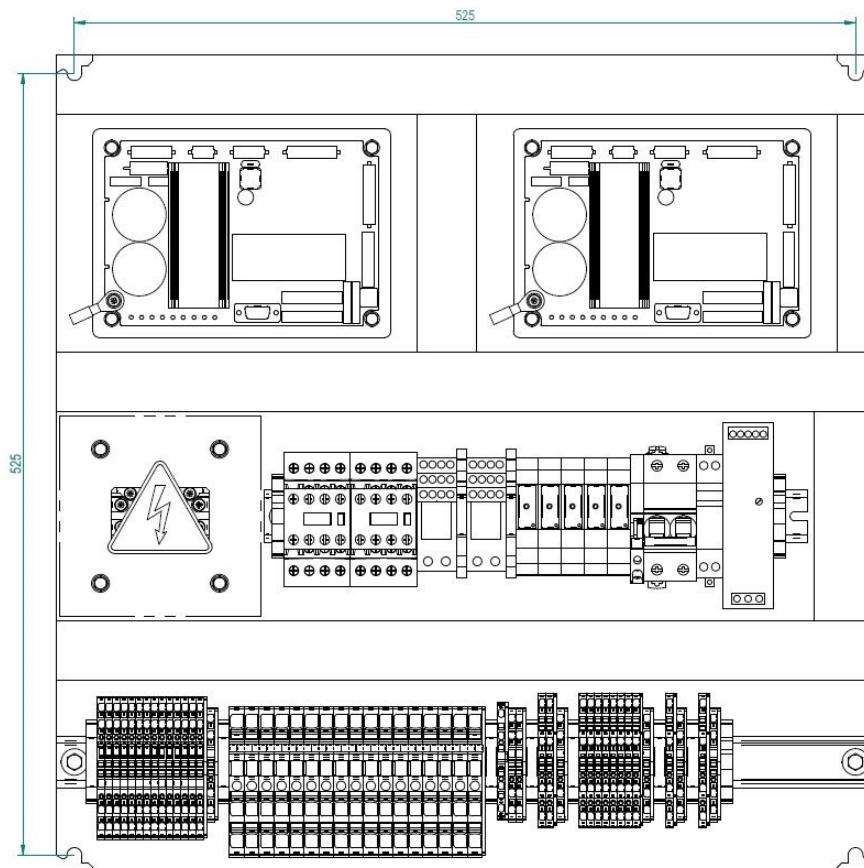
For the plate:

- 1 auxiliary power supply: 250 VAC max 50/60 Hz – 24 VDC - 3 A max
- D550 AVRs:
  - Voltage regulation accuracy: +/-0.25% of the rated value, as an average of the three phases on a linear load, with harmonic distortion of less than 5%
  - Voltage adjustment range: 0 to 150% of the rated voltage by means of volt-free contacts or an analogue input or CANBUS
  - Quadrature droop adjustment range: -20% to 20%
  - Underspeed protection: adjustable threshold in steps of 0.1 Hz, slope adjustable  $k \times V/Hz$  with  $0.5 < k < 5$
  - Field excitation ceiling: can be adjusted by the configuration at 3 points
  - Environment: ambient temperature of -40°C to +70°C, relative humidity up to 95%, no condensation, cabinet-mounted with vibration level up to +/-1 mm for frequencies from 0 to 25 Hz and less than 2 g for frequencies from 25 to 100 Hz.
- AVR parameters set with the "EasyReg Advanced" software provided or using communication interfaces.
- Dimensions:
  - Height: 550 mm
  - Width: 550 mm
  - Depth: 135 mm
- Weight: <30 kg

# Dual plate D550



- Fixings:



# Dual plate D550

## 1.4. Safety devices and general safety instructions

For the user's own safety, the dual plate D550 must be connected to approved earth terminals on the plate. The tools needed to make this connection are not included with the plate.

**Note: The 0Vs on the circuit boards of D550 AVR are connected to earth**

It is essential to comply with the power connection diagrams recommended in this manual.

The dual plate D550 contains devices which can, in the event of problems, control generator field weakening or overexcitation. This generator itself can become jammed for mechanical reasons. Finally, voltage fluctuations or power cuts may also cause the unit to stop.

The dual plate D550 which is the subject of this manual is designed to be integrated in an installation or an electrical machine and can under no circumstances be a safety device. It is therefore the responsibility of the machine manufacturer, the designer of the installation or the user to take all necessary precautions to ensure that the system complies with current applicable standards, especially safety standards, and to provide any devices required to ensure the safety of equipment and personnel (especially the prevention of direct or indirect contact when the plate is powered up).

LEROY-SOMER declines all responsibility in the event of the above recommendations not being observed.

The various interventions described in this manual are accompanied by recommendations or symbols to alert the user to potential risks of accidents. It is vital that you understand and take note of the different safety instructions provided.

This symbol warns of consequences which may arise from inappropriate use of the AVR or equipment, since electrical risks may lead to material or physical damage as well as constituting a fire hazard.



This symbol alerts users to a safety instruction warning of electrical danger to personnel.



### 1.4.1. General information

The dual plate D550 may contain unprotected live parts, as well as hot surfaces, during operation. Unjustified removal of protection devices, incorrect use, faulty installation, or inappropriate operation could represent a serious risk to personnel and equipment.

For further information, consult the documentation.

All work relating to transportation, installation, commissioning, and maintenance must be performed by experienced, qualified personnel (see IEC 364, CENELEC HD 384 or DIN VDE 0100, as well as national specifications for installation and accident prevention).

In these basic safety instructions, qualified personnel means persons competent to install, mount, commission and operate the product and possessing the relevant qualifications.



## Dual plate D550

### 1.4.2. Use

D550 voltage regulators are components designed for integration in installations or electrical machines.

When integrated in a machine, commissioning must not take place until it has been verified that the machine conforms with directive 2006/42/EC (Machinery Directive). It is also necessary to comply with standard EN 60204, which stipulates that electrical actuators (which include AVRs) cannot be regarded as circuit-breaking devices and certainly not as isolating switches.

Commissioning can take place only if the requirements of the Electromagnetic Compatibility Directive (EMC 2014/30/EU) are met.

Voltage regulators meet the requirements of the Low Voltage Directive 2014/35/EU. The harmonised standards of the DIN VDE 0160 series in connection with standard VDE 0660, part 500 and EN 60146/VDE 0558 are also applicable.

The technical characteristics and instructions concerning the connection conditions specified on the nameplate and in the documentation provided must be observed without fail.

### 1.4.3. Transportation, storage

All instructions concerning transportation, storage and correct handling must be observed.

The climatic conditions specified in this manual must be observed.

### 1.4.4. Installation

The installation and cooling of equipment must comply with the specifications in the documentation supplied with the product.

The dual plate D550 must be protected against excessive stress. There must be no damage to parts and/or modification of the clearance between components during transportation and handling. Avoid touching the electronic components and contact parts.

The dual plate D550 contains parts which are sensitive to electrostatic stress and may be easily damaged if handled incorrectly. Electrical components must not be exposed to mechanical damage or destruction (risks to health and/or of electrocution on power-up).

### 1.4.5. Electrical connection

When work is performed on the dual plate D550 while powered up, the national accident prevention regulations must be observed.

The electrical installation must comply with the relevant specifications (for example conductor cross-sections, protection via fused circuit-breaker, connection of protective conductor). More detailed information is given in this manual.

Instructions for an installation which meets the requirements for electromagnetic compatibility, such as screening, earthing, presence of filters and correct insertion of cables and conductors, are also given in this manual. These instructions must be followed in all cases, even if the AVR carries the CE mark. Adherence to the limits given in the EMC legislation is the responsibility of the manufacturer of the installation or the machine.

For an installation in Europe: the current sensors must guarantee initial basic insulation in conformity with the requirements of standard IEC 61869-1, Instrument transformers – "Part 1: General requirements" and IEC 61869-2, "Part 2: Additional requirements for current transformers".

For an installation in the USA: the current sensors must guarantee initial basic insulation in conformity with the requirements of standards IEEE C57.13, "Requirements for Instrument Transformers" and IEEE C57.13.2, "Conformance Test Procedure for Instrument Transformers".

## Dual plate D550

### **1.4.6. Operation**

Installations in which dual plate D550s are to be integrated must be fitted with additional protection and monitoring devices as laid down in the current relevant safety regulations, such as the law on technical equipment, accident prevention regulations, etc. Modifications to the D550 parameters using control software is permitted.

Active parts of the dual plate D550 and the device live power connections must not be touched immediately after being powered down, as the capacitors may still be charged. In view of this, the warnings fixed to the voltage regulators must be observed.

During operation, all doors and protective covers must be kept closed.

### **1.4.7. Service and maintenance**

Refer to the manufacturer's documentation.

Our technical support service will be pleased to provide you with any additional information you may require.

**This manual is to be given to the end user.**

### **1.4.8. Protection of the equipment**

Auxiliary power supply, which is used to provide the AVR and relays, is essential for the operation of the plate. It should therefore be connected permanently.

Similarly, the AC AVR power supply, which is used to create the field current, must be protected by fast-blow fuses or circuit-breakers. Its rating should be suitable for the generator on which the plate is mounted.

# Dual plate D550

## 2. Installation instructions

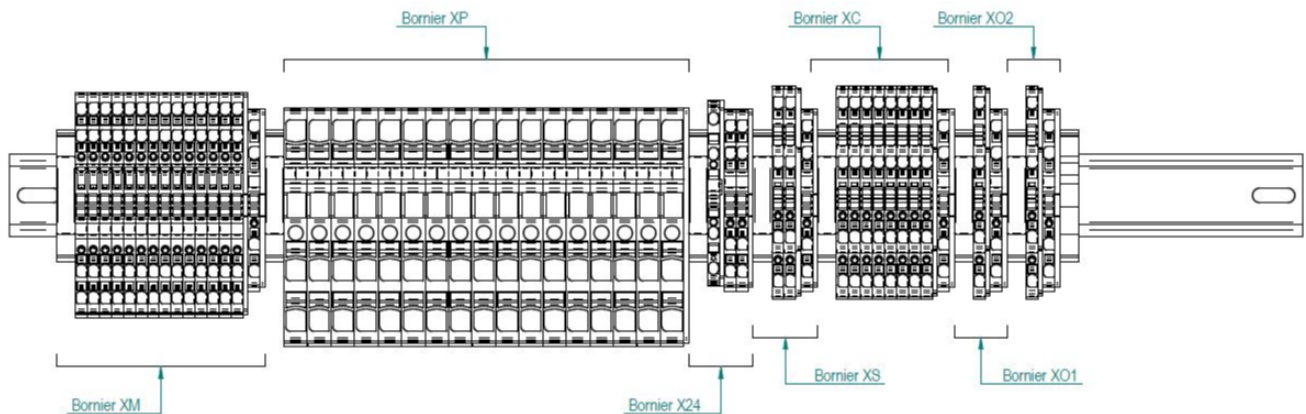
### 2.1. Layout of the cabinet housing the dual plate

Mounting must be vertical, and a 50 mm area around the plate must be kept free of obstructions.

A ventilation, cooling or heating system should be installed in the cabinet to maintain the plate within the environmental limits described above.

### 2.2. Connection block

The plate terminal blocks are separated according to their use:



- XM: AVR measurement. These are isolating blade terminals.
- XP: AVR power and field excitation
- X24: 24 VDC power supply, used redundantly with the 230 VAC power supply on the plate
- XS: 230 VAC power supply
- XC: regulation mode controls (AVR inputs)
- XO1: AVR 1 outputs
- XO2: AVR 2 outputs



**DO NOT OPEN THESE TERMINAL BLOCKS WHEN THE AVR IS IN "ACTIVE" STATE**

Plate Terminals	Generator	D550	Connection
XM.1	Phase L1	U	Generator voltage measurement – AVR 1
XM.3	Phase L2	V	
XM.5	Phase L3	W	
XM.2	Phase L1	U	Generator voltage measurement – AVR 2
XM.4	Phase L2	V	
XM.6	Phase L3	W	
XM.7	Phase NW1	L1	Mains voltage measurement – AVR 1
XM.9	Phase NW2	L2	
XM.8	Phase NW1	L1	Mains voltage measurement – AVR 2
XM.10	Phase NW2	L2	

# Dual plate D550

Plate Terminals	Generator	D550	Connection
XM.11	Phase L1 – S2	V-S2	Parallel operation CT – AVR 1
XM.12	Phase L1 – S1	V-S1	
XM.13	Phase L2 – S2	V-S2	Parallel operation CT – AVR 2
XM.14	Phase L2 – S1	V-S1	
XP.1	Power	X1	Field power – AVR 1
XP.3	Power	X2	
XP.5	Power	Z1	
XP.7	Power	Z2	
XP.2	Power	X1	Field power – AVR 2
XP.4	Power	X2	
XP.6	Power	Z1	
XP.8	Power	Z2	
XP.9	Exciter	E+	+ excitation
XP.10	Exciter	E-	- excitation
X24.1	+24VDC	-	24 VDC power supply - AVRs 1 & 2 Control circuit (plate power supply redundancy)
X24.6	0VDC	-	24 VDC power supply - AVRs 1 & 2 Control circuit (plate power supply redundancy)
XS.1	Neutral	-	230 VAC power supply - AVRs 1 & 2 Control circuit (plate power supply redundancy)
XS.6	Phase	-	230 VAC power supply - AVRs 1 & 2 Control circuit (plate power supply redundancy)
XC.1	-	-	Maintenance mode – AVR 1
XC.2	-	-	Plate +24VDC
XC.3	-	-	Maintenance mode reset – AVR 1
XC.4	-	-	Maintenance mode – AVR 2
XC.5	-	-	Common +24VDC for AVR 2 maintenance mode
XC.6	-	-	Maintenance mode reset – AVR 2
XC.7	-	-	DI1 input command – AVR 1 and 2
XC.8	-	-	Plate +24VDC
XC.9	-	-	DI2 input command – AVR 1 and 2
XC.10	-	-	Plate +24VDC
XC.11	-	-	DI3 input command – AVR 1 and 2
XC.12	-	-	Plate +24VDC
XC.13	-	-	DI4 input command – AVR 1 and 2
XC.14	-	-	Plate +24VDC
XC.15	-	-	DI5 input command – AVR 1 and 2
XC.16	-	-	Plate +24VDC
XO1.1	-	RL2.1	Relay output – AVR 1
XO1.2	-	RL2.2	Relay output – AVR 1
XO2.1	-	RL2.1	Relay output – AVR 2
XO2.2	-	RL2.2	Relay output – AVR 2

**Note:** Unless requested by the customer, our plate contains connection shunts on the XM and XP terminal block to only have a single source for the generator voltage measurement, generator current, mains voltage measurement and field excitation power signals. If there are separate sources, remove the corresponding shunts. Please refer to the full diagram of plate reference S4 199 0035 for more details.

## Dual plate D550

### 2.3. Consumption

- **Power supply:**
  - Consumption < 3A
- **Generator voltage sensing:**
  - Consumption < 2VA
- **Mains voltage sensing:**
  - Consumption < 2VA
- **Stator current measurement with a CT:**
  - Consumption < 2VA
- **Power supply:**
  - Consumption < 3000VA
- **Relay output:**
  - Consumption 125VA – 1A max. / 30VDC – 3A max.

**Note:** The other measurement inputs (mains current, cross-current measurement, etc) are still available but are not wired up on this plate.

### 2.4. Wiring precautions

The cable length must never exceed 100 m. To ensure compliance with standards IEC 61000-6-2, IEC 61000-6-4, and IEC 60255-26, shielded cables are essential in the case of a D550 installed outside the terminal box.

The total ohmic value of the exciter circuit loop (outward and return) must not exceed 5% of the exciter resistance, whatever the cable length.

The ohmic value of the power system cables must not exceed 5% of the exciter resistance, whatever the cable length.

For information, the resistance at 20°C in mΩ/m for copper cables is approximately:

Cross-section (mm <sup>2</sup> )	Resistance (mΩ/m)
1.5	13.3
2.5	7.98
4	4.95
6	3.3
10	1.91

Example of calculation:

For a 10 Ohm exciter

- Maximum cable resistance = 0.5 Ω (2x0.25Ω)
- Cross-section according to the distance between the AVR and generator:

Distance (m)	Cross-section (mm <sup>2</sup> )
30	2.5
50	4
75	6
100	10

# Dual plate D550

## 3. Setup instructions

### 3.1. Stator voltage and current measurement



For the plate to work correctly, the stator voltage and current measurement on both AVRs must be identical. For generators with an unbalanced load, using different phases can result in a measurement fault and a bump in regulation on switching from one AVR to the other.

For generators where only one stator current measurement transformer is used, it is possible to put stator current measurements on both AVRs in series.

### 3.2. Configuration files

The configuration of both AVRs must be identical, apart from choosing one to be the "master" and must correspond to the technical and electrical data of the generator on which the plate is to be installed.

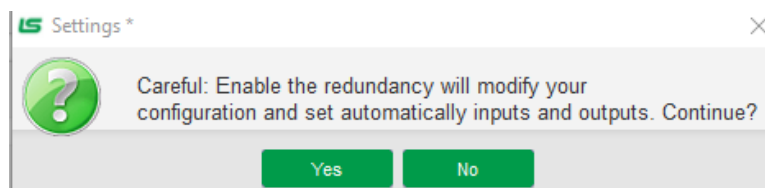
It is therefore important to pay particular attention to the following settings:

- Generator power, rated voltage, frequency and power factor.
- Voltage transformers for generator voltage sensing
- Voltage transformers for mains voltage sensing
- Current transformer for stator current measurement
- Setpoint adjustment values (voltage, power factor, kVAr - depending on the application) and all types of applied corrections (pushbuttons, potentiometer, etc.)
- PID coefficient values
- Limitations
- Input and output configuration

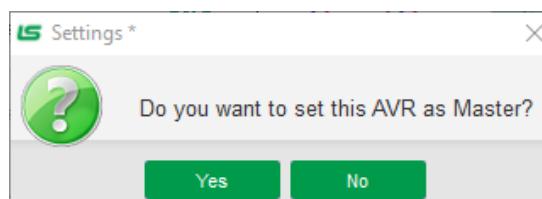


**CAUTION, DO NOT OVERWRITE ONE AVR CONFIGURATION WITH THE OTHER AVR CONFIGURATION**

Using the EasyReg Advanced program, selection of AVR redundancy can be found in the "Configuration" menu, then the "Wiring" page. Click on the "Redundancy second D550" box. The following message appears:



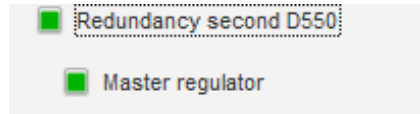
Click "Yes". A second message appears:



Click "Yes" for the AVR which should be "active" when the plate starts, and "No" for the AVR which should be "Online".

# Dual plate D550

If the AVR is the "Master", the "Master regulator" box is checked.



In both cases, the drawing on the right is updated with the appearance of a second D550.

### Wiring

Generator voltage connection: 2: 3 Ph (U-V-W)

Generator PT

Grid voltage PT

Step up VT

Redundancy second D550

Master regulator

CT    CT connection: 1: GEN\_U

Generator CT		
Primary (A)	Secondary (A)	Phase shift (°)
50.0	1.0	0.0

Main CT		
Primary (A)	Secondary (A)	Phase shift (°)
1.0	1.0	0.0

Cross current CT		
Primary (A)	Secondary (A)	Phase shift (°)
1.0	1.0	0.0

Temperature probe(s)

Enable of energy metering

Threshold for triggering the memorization of the counter (% Unom): 75.0

Reset Energy Counter (exported activ)  
 Reset Energy Counter (imported activ)  
 Reset Energy Counter (exported reactiv)  
 Reset Energy Counter (imported reactiv)

Reset selected counter

Grid/Load

On the "Protections" page, the following faults are automatically activated:

- "Machine fault" tab: reverse reactive fault
- "Regulator fault" tab: loss of sensing fault, battery, and excitation chain fault
- "Power bridge" tab: Redundancy communication fault

**Note: both these faults are active, with auto-reset, but the levels as well as any associated actions should be set to suit your generator and how you want it to work.**

On the "Inputs/Outputs" page:

- DI08: activation of "Maintenance" mode. This mode can be used to set the D550 offline. Redundancy between the two AVRs is then no longer active: only the second D550 can regulate. If maintenance mode has been activated on one of the two D550s, it prevents "Maintenance" mode on the second D550.
- Input AI1 (0-10V) is configured as follows:
  - < 25%: indicates that the second D550 is neither active nor online
  - >25% and < 50%: indicates that the second D550 is online but not active
  - >50%: indicates that the second D550 is active and online

## Dual plate D550

- Outputs AO2 (0-10V) is configured as follows:
  - < 25%: indicates that the second D550 is neither active nor online
  - < 25% and < 50%: indicates that the second D550 is online but not active
  - > 50%: indicates that the second D550 is active and online

Analog Inputs						Analog Outputs			
ID	Configuration AI	Destination	0% value	100% value	Wirebreak monitoring	Configuration AO	Source	0% value	100% value
AI01	0-10V	Analogue version of redundancy param	0.00	100.00	<input type="checkbox"/>	None	None	0	0
AI02	+/-10V	None	0.00	0.00	<input type="checkbox"/>	0-10V	Analogue version of redundancy param	0	100
AI03	0-10V	None	0.00	0.00	<input type="checkbox"/>	None	None	0	0
AI04	0-10V	None	0.00	0.00	<input type="checkbox"/>	None	None	0	0

- RL1 is activated if the AVR is "online"

Digital Inputs			Digital Outputs		
Digital Input	Active	Destination	Source	Active	Digital Output
DI1	Active Low	None	None	Active Low	DO1
DI2	Active Low	None	None	Active Low	DO2
DI3	Active Low	None	None	Active Low	DO3
DI4	Active Low	None	None	Active Low	DO4
DI5	Active Low	None	None	Active Low	DO5
DI6	Active Low	None	None	Active Low	DO6
DI7	Active Low	None	None	Active Low	DO7
DI8	Active Low	Maintenance	None	Active Low	DO8
			Online	Active Low	RL1
			None	Active Low	RL2

### 3.3. Checks prior to commissioning.

**Step 1:** Install and check the plate wiring in accordance with the wiring diagrams supplied to you with the plate and possibly with the generator.

**Step 2:** Supply the AVRs and the control circuit with 230 VAC power. Check that:

- Both AVRs are powered up and running: the power supply LED on each D550 is green.
- The control circuit relays are supplied with power.

**Step 3:** Check that the AVRs are in "redundancy" mode:

- With the EasyReg Advanced program, "Wiring" page: the "Redundancy second D550" box should be checked, with the "Master regulator" box checked on AVR 1 and unchecked on AVR 2.



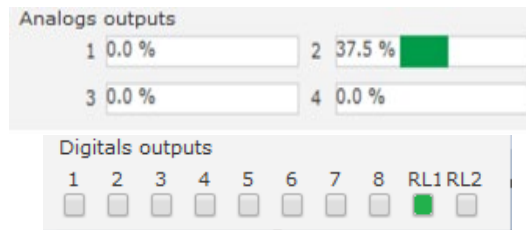
- With the EasyReg Advanced:
  - On the "Master" AVR: the analogue output AO2 is > 50% and the relay RL1 that drives the contactor is active.





## Dual plate D550

- On the "Online" AVR: the analogue output AO2 is > 25% and > 50% and the relay RL1 that drives the contactor is active.



**Step 4:** Check that the measurement and power data is reaching the AVRs:

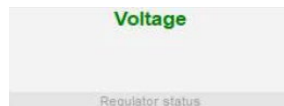
- The plate disconnect terminals are closed properly.
- The generator and power voltage sensing circuit-breakers are closed properly in the generator.
- Check that the status of both AVRs is "OFF".

### 3.4. Aligning measurements

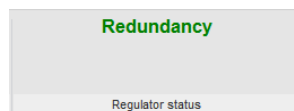
Once these checks have been done, make sure that the measurements on both AVRs give similar results. This is done by using two load points on the machine and checking the measurements on the monitor page:

**Step 1:** Start the generator

- Build up to rated speed.
- Energise the machine by starting field excitation. The voltage should build up to the voltage setpoint without racing.
- Check that both AVRs are running by using EasyReg Advanced,
  - On the "Master" AVR**, the regulation mode is displayed:



- On the "Online" AVR**, the regulation mode is "Redundancy":



**Step 2:** The active AVR will be the reference for voltage and current measurements. The accuracy of its readings should therefore be checked against any devices present on the customer's premises (instruments measuring voltage, current, power factor, etc.).

**Step 3:** Aligning the voltage measurements.

- Do not apply load to the machine.
- Check the voltage reading on both AVRs with EasyReg Advanced by connecting to both AVRs in succession. If the voltage on the "Online" AVR is incorrect ( $\pm 1\%$  of the voltage on the "active" AVR), correct this by changing the primary or secondary values of the generator voltage sensing transformer (General machine configuration).

**Step 4:** Setting the stator current

- If possible, apply a load representing more than 25% of the generator rated power (this operation can be done in voltage, power factor or kVAr mode).
- Check the stator current reading on both AVRs with EasyReg Advanced by connecting to both AVRs in succession. If the stator current measurement of the "Online" AVR is incorrect ( $\pm 1\%$  of the current on the "active" AVR), correct this by changing the primary or secondary values of the main stator current transformers and/or isolating transformers (General machine configuration).

# Dual plate D550

**Step 5:** Setting the PF

- With the same load, check the PF measurement on the online AVR. If the power factor measurement on the "Online" AVR is incorrect ( $\pm 0.01$  compared to that on the "active" AVR), correct this by changing the phase shift on the parallel operation CT.

**Step 6:** Stop the installation

## 4. Instructions for use

This plate has been developed to switch automatically from an "active" AVR 1 to an "online" AVR 2, if a fault is detected on AVR 1. Manual switching is possible, however.

### 4.1. Safety instructions

Before using the plate for the first time, please refer to the instructions and make sure that operations are performed in accordance with the safety measures in paragraph 1.4.

### 4.2. Description of control and signalling devices

The plate does not have any control and signalling devices.

### 4.3. Description of running modes

#### 4.3.1. Manual switching

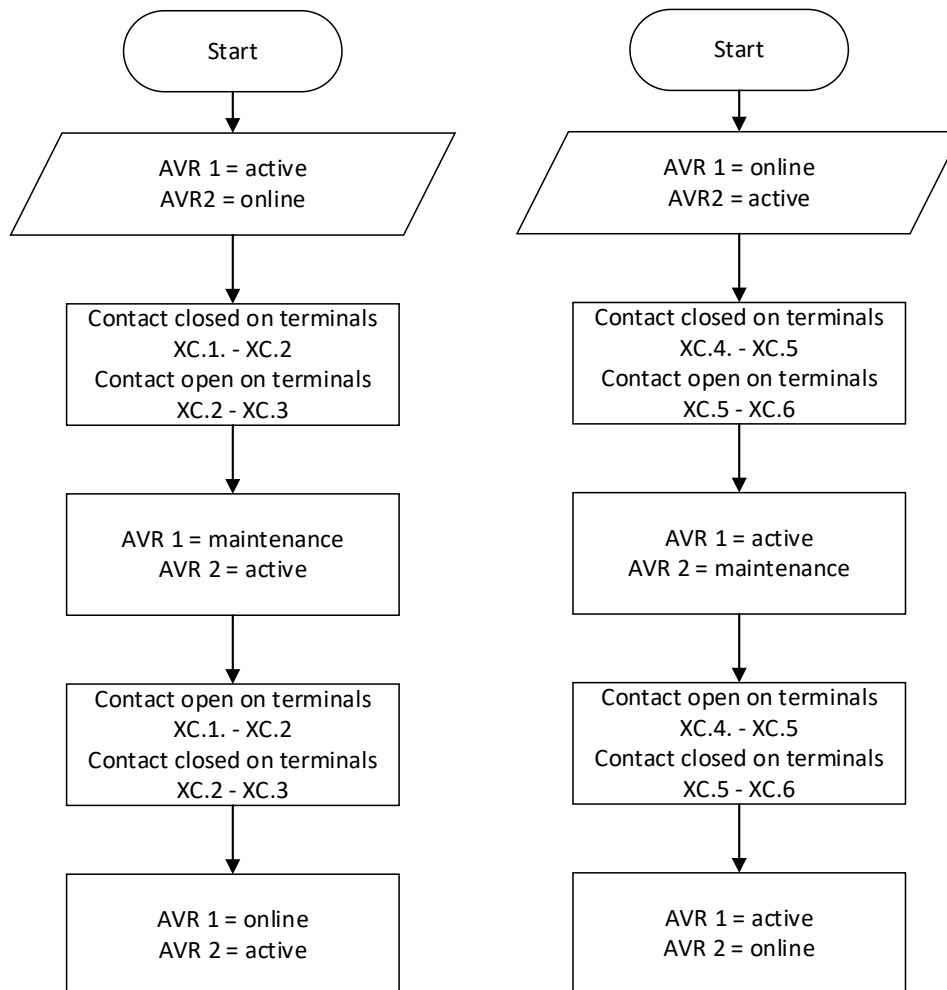
As previously mentioned, the AVRs can be switched manually with the "Maintenance" input on each AVR. These inputs depend on the relays on the plate which prevent both AVRs being set to maintenance mode simultaneously.

The plate therefore has 4 contact inputs:

- Terminals XC.1 and XC.2: AVR 1 maintenance
- Terminals XC.2 and XC.3: AVR 1 maintenance reset
- Terminals XC.4 and XC.5: AVR 2 maintenance
- Terminals XC.5 and XC.6: AVR 2 maintenance reset

# Dual plate D550

An "active" AVR can then be switched to an "online" AVR:



**Note: The "active" AVR cannot be set to "maintenance" mode if regulation is occurring and the second AVR is in "maintenance" or "fault" mode.**

### 4.3.2. Correction of setpoints with digital inputs

Setpoint corrections are only copied from the "active" AVR to the "online" AVR by the CANBUS if they have been created with digital inputs. The regulation context is then preserved in the event of switching.

### 4.3.3. Follower

The correction value of the field current given by the follower is copied from the "active" AVR to the "online" AVR by the CANBUS. The regulation context is then preserved in the event of switching and running in manual mode.

### 4.3.4. Switching on a fault

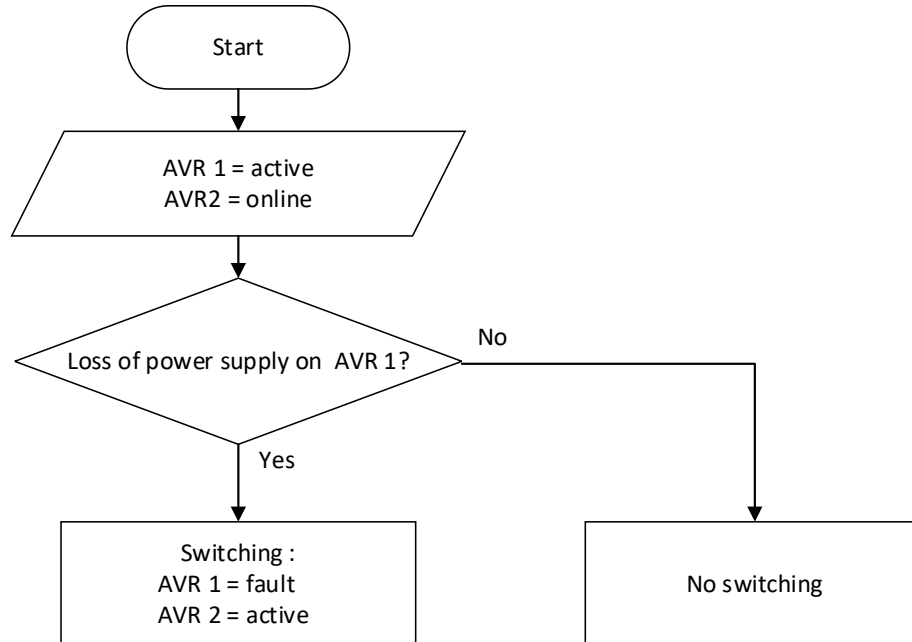
Several faults can cause switching from the "active" AVR to the "online" AVR:

- Loss of the internal power supply
- A controller fault on the power transistor
- Loss of sensing on the "active" AVR and not on the "online" AVR
- A reactive power inversion fault

## Dual plate D550

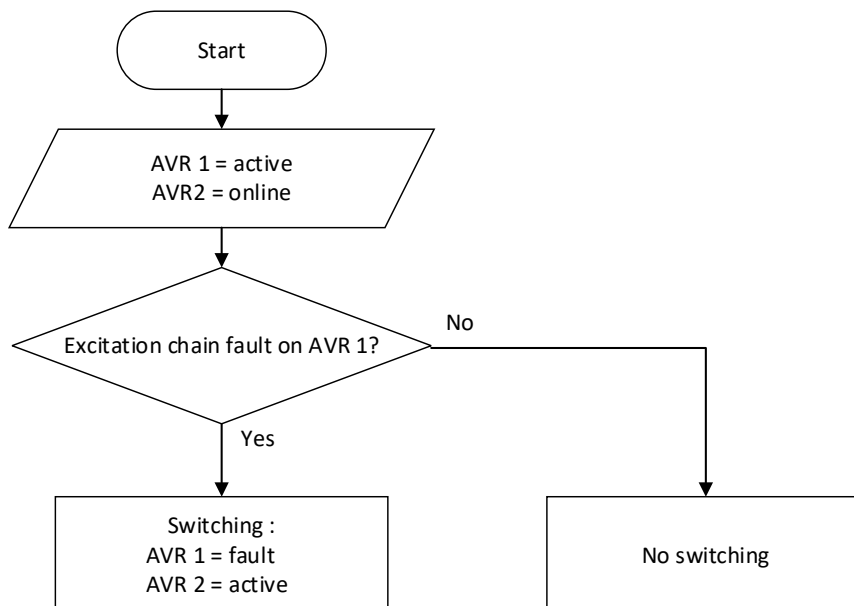
### 4.3.4.1. Loss of power supply

If the power supply fails, switching to the "online" AVR occurs automatically.



### 4.3.4.2. Excitation chain fault

Each AVR has a circuit which monitors the excitation chain. If there is a discrepancy between the excitation chain and its action, the "active" AVR switches to "fault" mode and the "online" AVR switches to "active" mode.

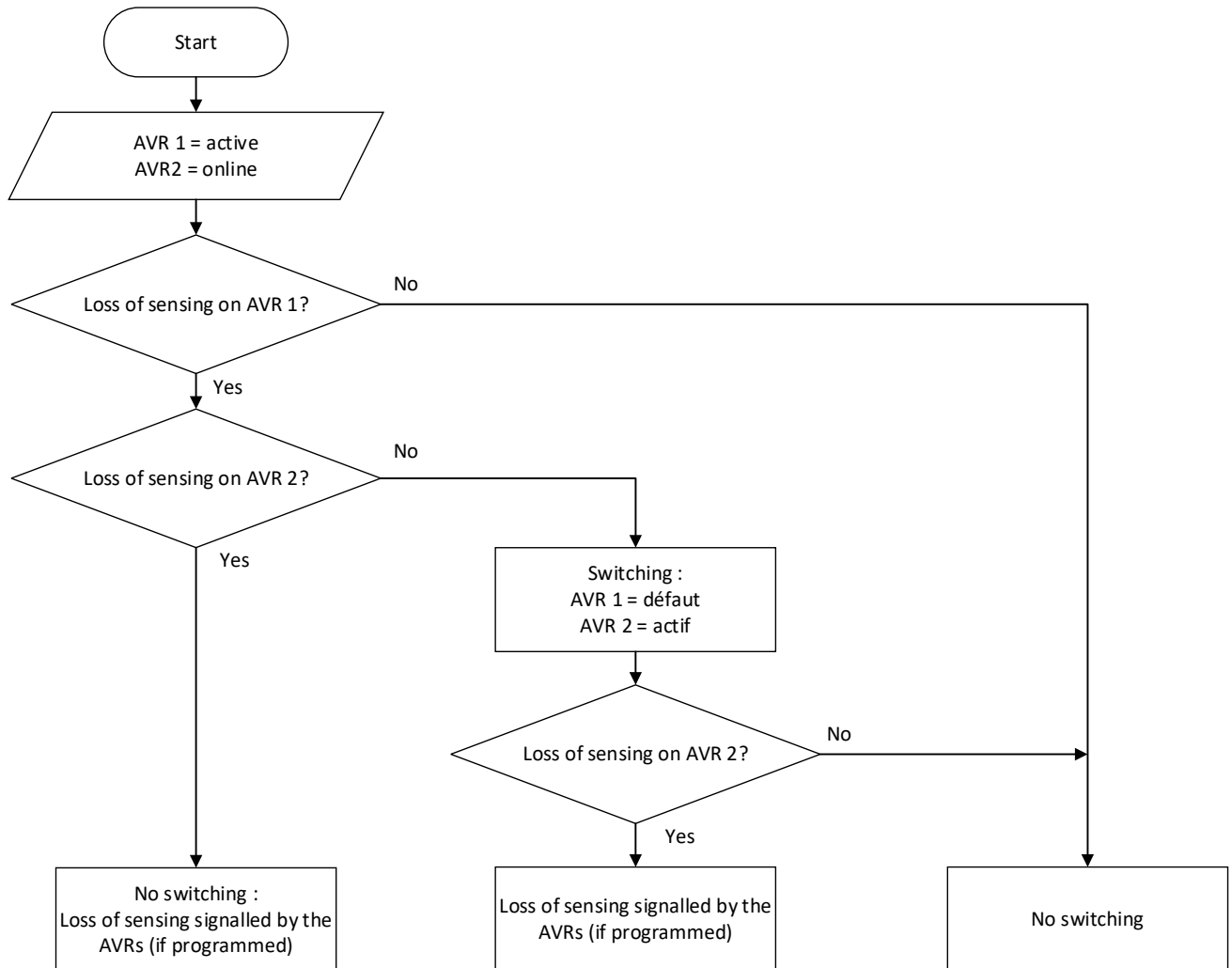


## Dual plate D550

### 4.3.4.3. Loss of sensing

Loss of voltage sensing on the machine is monitored throughout operation.

- If loss of sensing is detected on the "active" AVR and not on the "online" AVR, the active AVR switches to fault mode.
- If loss of sensing is detected for both the "active" and "online" AVRs, then switching does not occur (that may then come from the sensing VT).



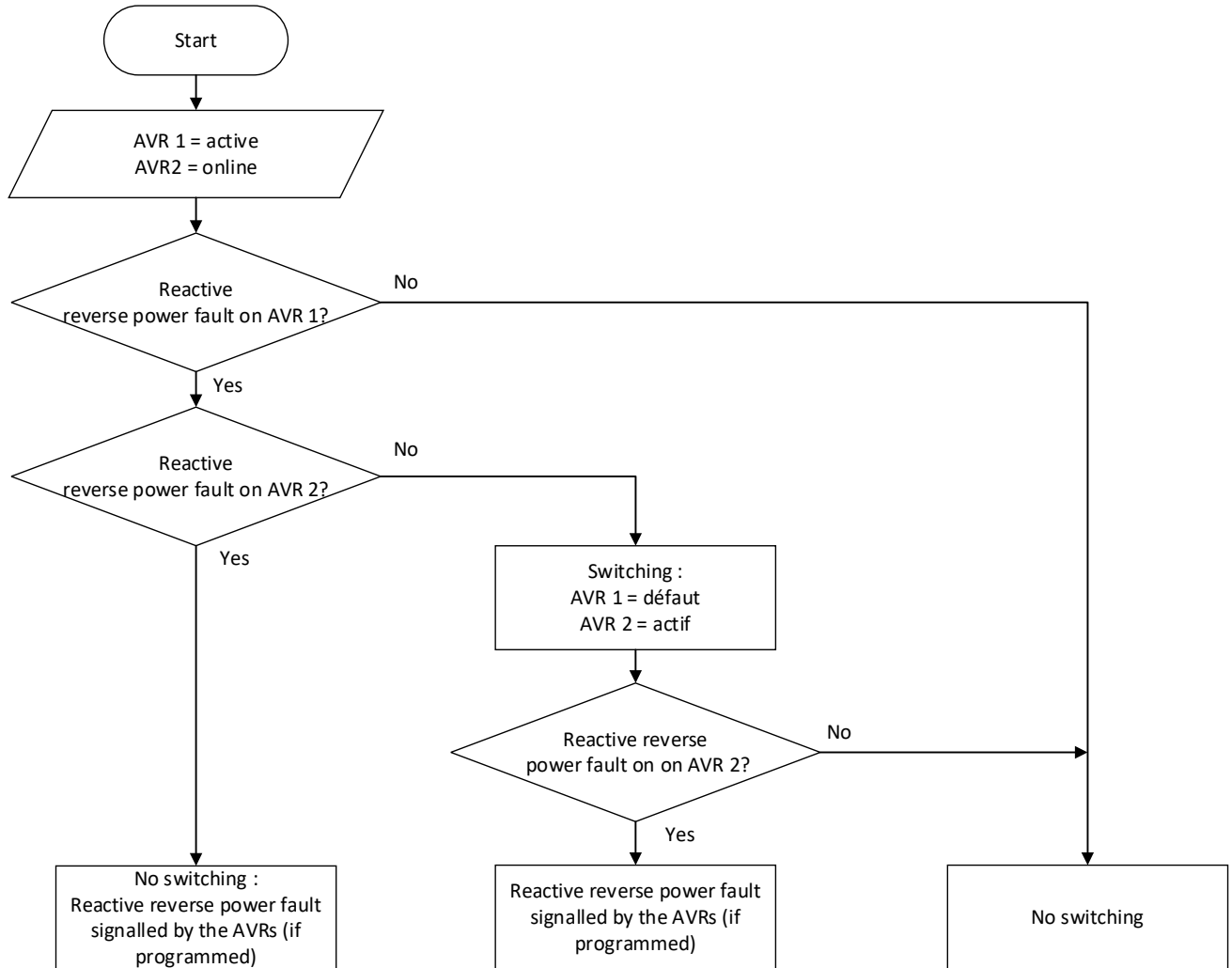
**Note:** By default, no action has been programmed for loss of sensing. A significant bump may therefore occur on switching to the "online" AVR. This bump may be less noticeable if the "field current before fault" action has been selected.

## Dual plate D550

### 4.3.4.4. Reactive reverse power fault

The reactive reverse power fault on the machine is monitored throughout operation.

- If this fault is detected on the "active" AVR and not on the "online" AVR, the active AVR switches to fault mode.
- If this fault is detected for both the "active" and "online" AVRs, then switching does not occur (that may then come from a fault in the link to the exciter).



**Note:** By default, no action has been programmed for reactive reverse power. A significant bump may therefore occur on switching to the "online" AVR. This bump may be less noticeable if the "field current before fault" action has been selected.

## Dual plate D550

### 4.3.5. Procedure for replacing a faulty AVR

If one of the AVRs is faulty, the AVR concerned must be replaced. This change can be made (while observing the safety conditions), even while the installation is running, by performing the steps below:

**Step 1:** Isolating the AVR

- Open the power disconnect terminals
- Open the generator and mains voltage measurement disconnect terminals

**Step 2:** Dismantling the AVR

- Remove the AVR connectors
- Disconnect the earth wiring

**Step 3:** Physically removing the faulty AVR

**Step 4:** Installing the spare AVR

- Make sure that the AVR is firmly fixed on the plate

**Step 5:** Electrical connections

- Wire up the earth connection
- Wire up the connectors, in strict compliance with the plate wiring diagram



**CAUTION:** Reversing the wiring can seriously damage the generator and the AVR.

**Step 6:** Supplying the AVR with power

- Check the AVR operation

**Step 7:** Loading the AVR configuration with the saved configuration (or if it is not available, using the configuration of the second AVR).

**Step 8:** Closing the disconnect terminals

**Step 9:** Checks

- Set the AVR to "maintenance" mode
- Check that the voltage and current measurements are in the same range. If this is not the case, please refer to section 3.4. Aligning measurement.
- Reset "maintenance" mode on the AVR concerned
- Check that the AVR reacts OK to the change of "maintenance" mode to "online" on the home page
- Save the configuration of the AVR that has been replaced

## Dual plate D550

### 4.4. Anomalies and problems

Several anomalies can occur on the AVR, which may result in it being replaced. These faults are listed in the table below.

ANOMALIES	CAUSES	REMEDIES	RESTARTING
Loss of sensing fault	Generator sensing VT broken	Replace the faulty VT	Stop the generator and initialize plate operation.
	AVR internal sensing circuit broken	Replace the AVR	Restart the plate with the procedure in section 4.3.5.
AVR power transistor short-circuited	Component fault or exciter circuit open which has generated an overvoltage on the transistor	Replace the AVR	Restart the plate with the procedure in section 4.3.5.
Power supply fault on one AVR	Internal power supply fault of AVR	Replace the AVR	Restart the plate with the procedure in section 4.3.5.
Control 24 VDC power supply fault	Plate general fault	Replace the 24 VDC power supply	Restart the corresponding power supply and check the functions work.
Microcontroller fault on one AVR	Component failure	Replace the AVR	Restart the plate with the procedure in section 4.3.5.
The AVR is in "fault" mode when an attempt is made to switch it "online"	A condition has not been met for the AVR to switch to "online" mode	Check that the disconnect terminals are closed, the connectors are correctly inserted, the AVR is supplied with power and the measurements comply with the "active" AVR	Restart the plate with the procedure in section 4.3.5.
One AVR doesn't change mode when "maintenance" is requested  Both AVRs are in regulation mode and the "online" one is not marked "redundancy"	Communication between the two AVRs is faulty	Check the CAN serial link between the two AVRs	Restart the plate with the procedure in section 4.3.5.



# Dual plate D550

## 5. Maintenance

### 5.1. Technical data

#### 5.1.1. Mechanical drawings

The layout plan for the dual plate D550 is available under reference P5 199 0035.

#### 5.1.2. Wiring diagrams

The wiring diagram for the dual plate D550 is available under reference S4 199 0035.

### 5.2. Preventive maintenance instructions

Check that the terminals have been tightened correctly on all the equipment (especially the AVR connectors) with a tightening torque of between 0.6 and 0.8 Nm, and dust as often as necessary for the operating conditions.

# Dual plate D550

# Service & Support

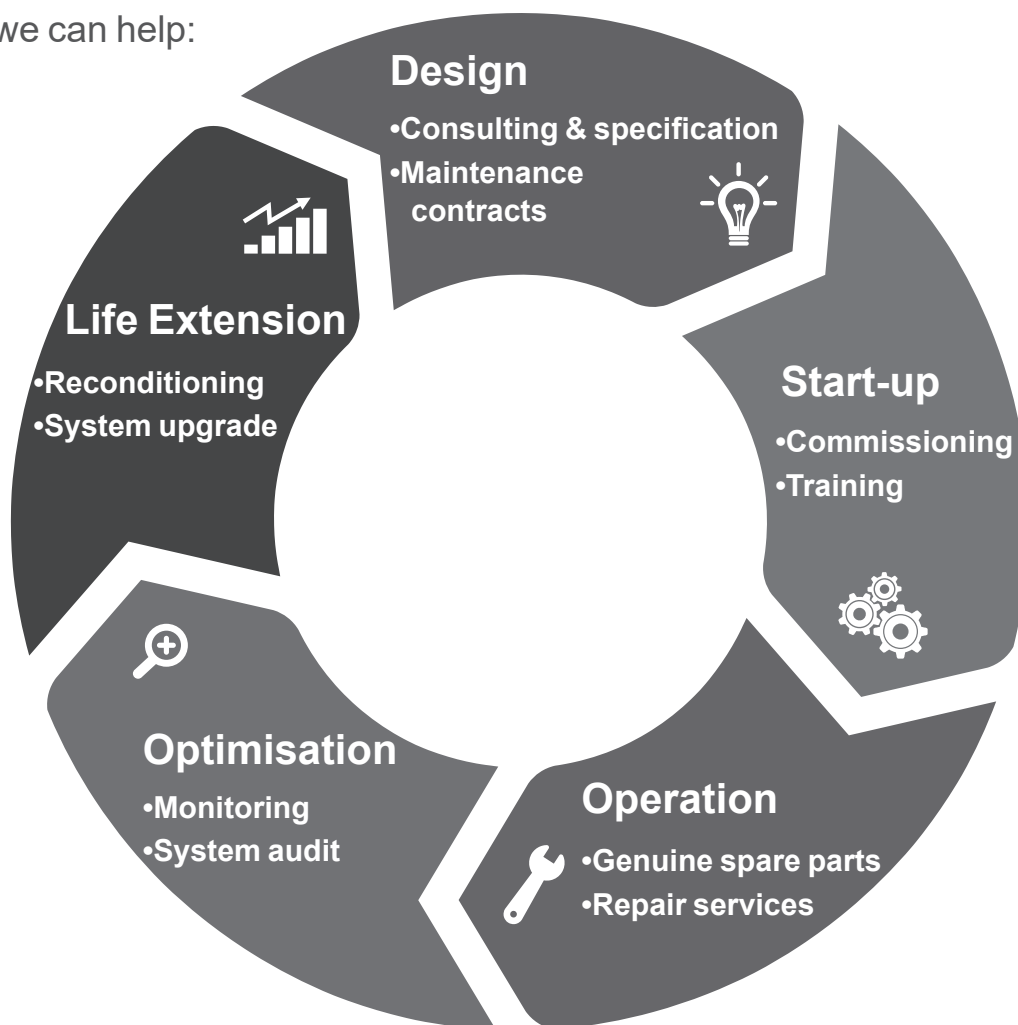
Our worldwide service network of over 80 facilities is at your service.

This local presence is our guarantee for fast and efficient repair, support and maintenance services.

Trust your alternator maintenance and support to electric power generation experts. Our field personnel are 100% qualified and fully trained to operate in all environments and on all machine types.

We have a deep understanding of alternator operation, providing the best value service to optimise your cost of ownership.

Where we can help:



Contact us:

**Americas:** +1 (507) 625 4011

**EMEA:** +33 238 609 908

**Asia Pacific:** +65 6250 8488

**China:** +86 591 8837 3010

**India:** +91 806 726 4867



Scan the code or go to:

 [service.epg@leroy-somer.com](mailto:service.epg@leroy-somer.com)

[www.lrsm.co/support](http://www.lrsm.co/support)

**LEROY-SOMER™**

[www.leroy-somer.com/epg](http://www.leroy-somer.com/epg)

Connect with us at:



***Nidec***  
All for dreams