












CUSTOM-MADE, RAW OR MACHINED GRAPHITE CAST IRON PARTS

With a long-standing experience in the foundry business, our dedicated expert team designs, develops and manufactures tailor-made metal parts, from foundry to machining, to meet the highest precision and performance requirements you may have.

With a capacity of 20,000 tons per year, our lamellar and spheroidal cast iron foundry offers state-of-the-art equipment and 2 high-pressure green sand molding production lines. The proven, reliable, and optimal processes guarantee quality and robustness of the parts.

By optimizing electricity consumption, promoting the recovery and recycling of waste and prioritizing sustainable materials, we are committed to an eco-friendly foundry.



-  2 molding lines (vertical & horizontal molding)
-  Gray iron (EN-GJL) & Ductile iron (EN-GJS) casting
-  102 operators in foundry + 20 for machining
-  Flexibility in parts weight & dimensions
-  Raw or Finished parts: Machining, coating, painting, polishing, pre-assembling
-  2 robotic cells with 2D and 3D monitoring cameras for deburring
-  Medium or large batch of parts
-  Creation of bespoke tools
-  Inspection & Prototyping lab, 3D printing, 3D Scan

LEROY-SOMER[™]

Nidéc
All for dreams

TWO MAIN PROCESSES OFFERING HIGH FLEXIBILITY

SMALL PARTS / M15 (Disamatic Vertical line)

- Gray iron (EN-GJL 150, 200, 250, 300)
- 0.5 kg < Parts < 18 kg
- Minimum production of 100 t / year / part number
- Typology / complexity of parts: 1 core
- Capacity: 320 moldings / hour
- Useful mold volume: 380 x 500 x H200 mm

Endshields:



0.5 - 18 kg



2.5 kg



4 kg



2.4 kg

Body:



2 kg

Other:



5 kg



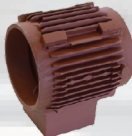
LARGE PARTS / M16 (HWS Horizontal line)

- Gray iron (EN-GJL 150, 200, 250, 300) & Ductile iron (EN-GJS 400-15, 450-10)
- 1 kg < Parts < 200 kg
- Minimum production of 500 t / year / part number
- Typology / complexity of parts: 2 to 6 cores
- Capacity: 100 moldings / hour
- Useful mold volume: 950 x 850 x H560 mm

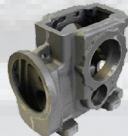
Housings:



14 - 80 kg



5 - 100 kg



43 kg



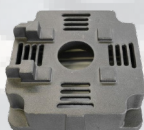
22 kg

Fans, turbines:



70 kg

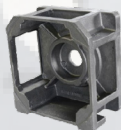
Endshields:



10 kg



1 - 10 kg



20 kg

Machine parts:



200 kg



CONTACT

Nidec Leroy-Somer

Rabion Plant, Angoulême – France

Contact email: cyrille.arvers@mail.nidec.com and pierre-alexis.colignon@mail.nidec.com