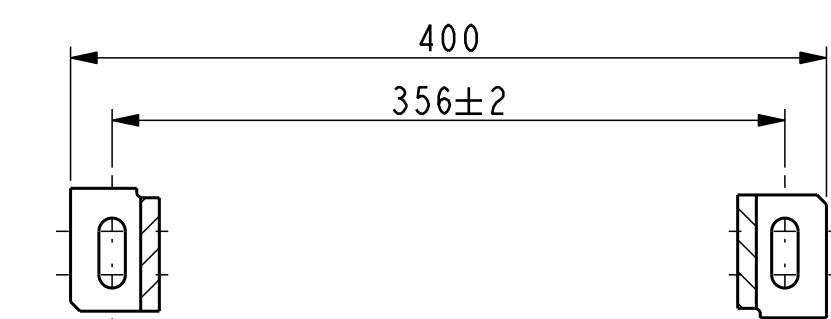
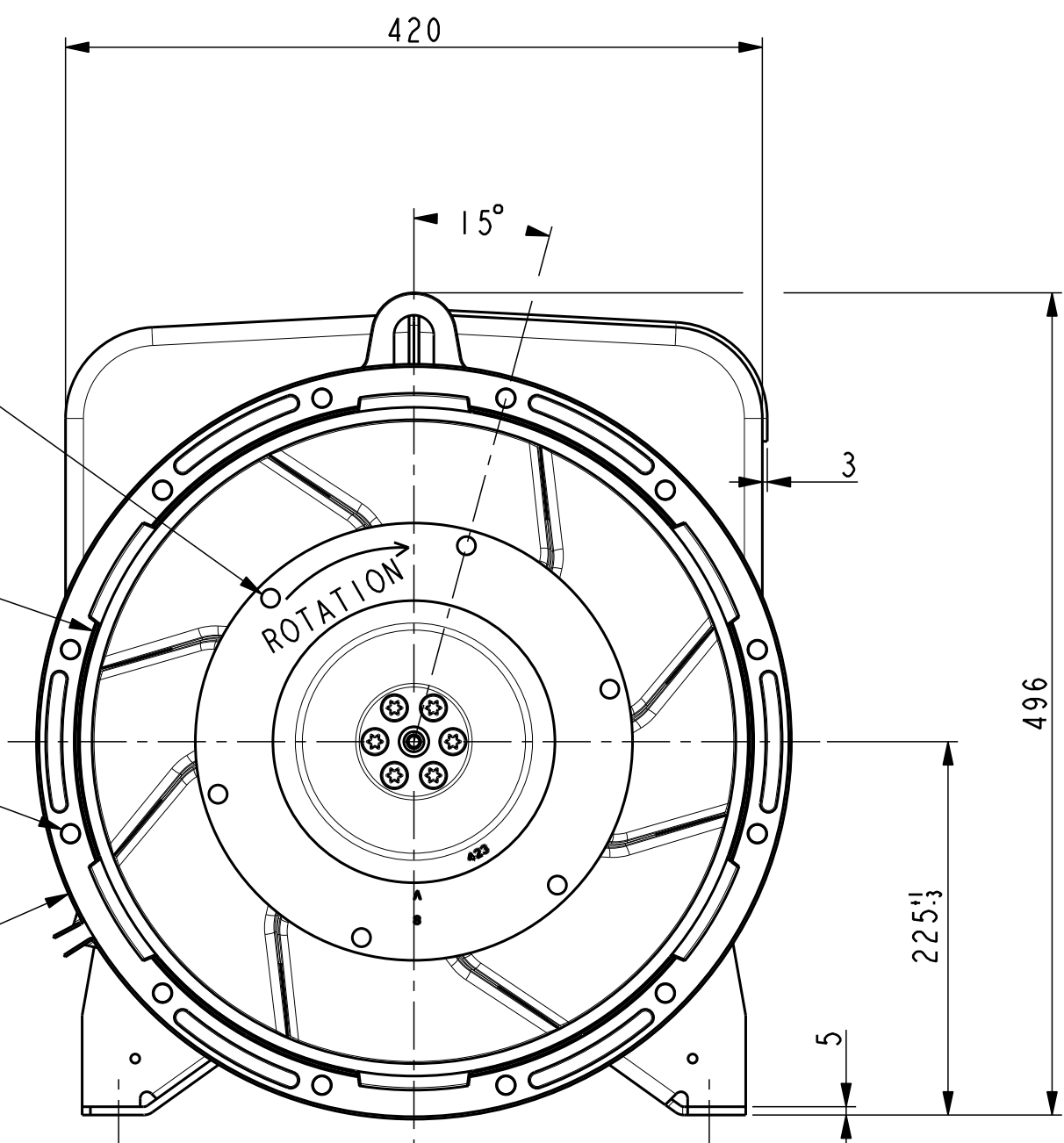


6 TROUS Ø11 sur Ø244.48 EQUIDISTANT  
11 DIA, 6 EQ. SP. ON 244.48 PCD

Ø 409,58<sub>0,127</sub>

12 TROUS Ø11 sur Ø428.62 EQUIDISTANT  
11 DIA, 12 EQ. SP. ON 428,62 PCD

Ø 455

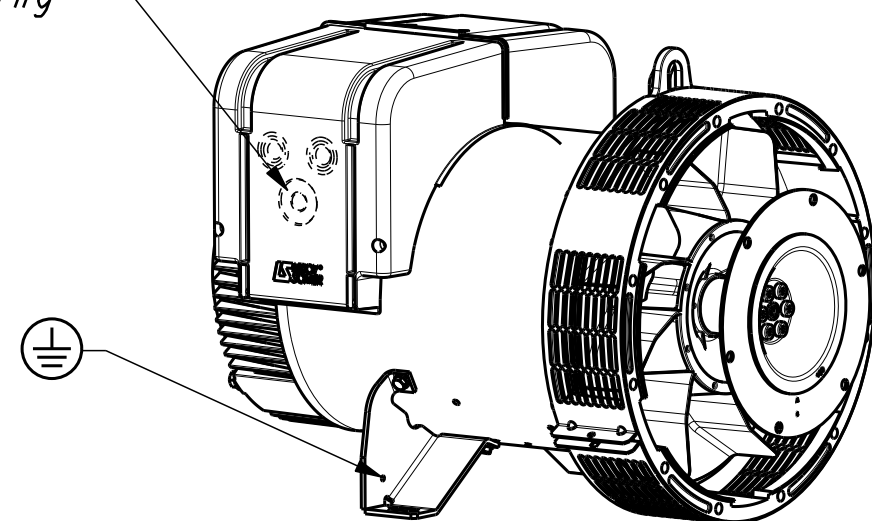


TYPE	Xg	Masse Kg Weight	J Kg <sup>2</sup>
LSA423 L9	310	186	0.4178

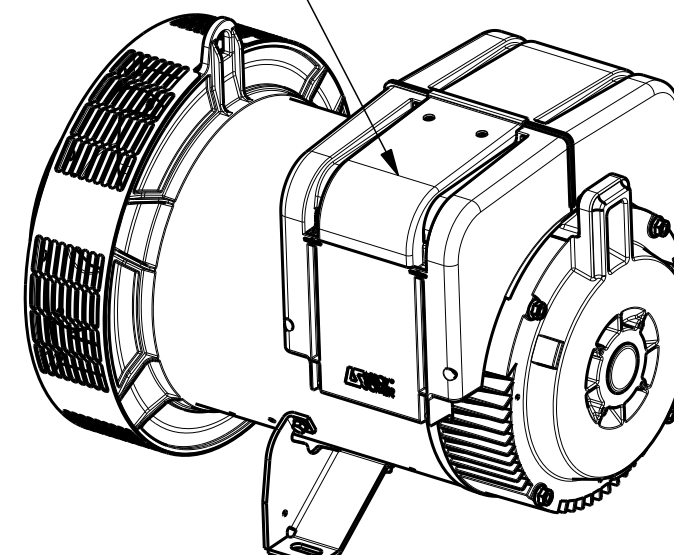
Sortie des cables Gauche vue bout d'arbre en STD  
Acces regulateur Droite vue bout d'arbre en STD  
Output power on left hand side view DE standard  
Access to regulator on right hand side view DE standard

Pre percage Ø21 Ø25 Ø32 Ø40 Ø50  
Predrilling

Acces regulateur  
Access to regulator



ECHELLE 0,125



ECHELLE 0,125

INDICE	DATE	NATURE DE LA MODIFICATION	N° C.T.	NOM	VERIF B.E.	VERIF METH
f	14/03/2013	Modification dimension	13-177	Truksa		
e	05/02/13	Modification dimensions	13-017	PRIKRYL		
d	14/12/2011	cote 616 ==> 618	11-586	JMD	AR	SM
c	10/10/2011	Ajout tolérance sur Ø409.58	11-453	JMD	AR	SM
b	19/09/2011	Turbine 11 pales ==> 8 pales	11-412	JMD	AR	SM
a	X	X	11-346	X	X	X

Tolerances generales: - generale		Etats de surfaces (NFE 05-016) Ra: - partout sauf indications			
Ref: -	Echelle	Machine: ALTERNATEUR ALTERNATOR			
Obs: SAE 3 - 8 H=225 - L9	0,250	LSA423			
Matiere:		Designation: ENCOMBREMENT			
Modele de base: -		OUTLINE			
Variante: -		MOTEURS LEROY-SOMER 16015 ANGOULEME - FRANCE			
Composant: -					
Compose: -					
Dessine: Debord	Verif methodes				
Verifie: AR	S MAROT				
Date: 25/07/11	25/07/2011	A2	LSA423-8-065		